

# Santa Paula Branch Line - Agricultural Challenges

Presented to the Ventura County Transportation Commission

January 9, 2026

Korinne Bell

Agricultural Commissioner





# Department Overview

## Four Divisions:

- Pesticide Use Enforcement
- Pest Exclusion
- Agriculture & Consumer Protection
- Weights & Measures



# Pesticide Use Enforcement

- Permit Issuance and Review
- Pre-Site Evaluations
- Application Inspections
- Headquarters and Storage Inspections
- Fieldworker Safety
- Structural Pest Control
- Air Monitoring/Sampling
- Enforcement Response
- ½ Apiary







# Pest Exclusion

Phytosanitary  
Certification

High Risk Pest  
Exclusion

Sudden Oak  
Death  
Program

Industrial  
Hemp  
Program

Nursery/Seed

Green Waste  
Monitoring

½ Apiary

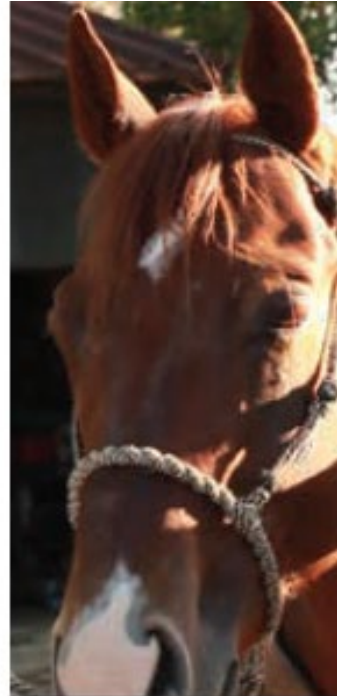


# FACTS

Farms are Food  
Factories

Agriculture  
Changes

Agriculture is  
highly Regulated



**//** Agriculture is the most healthful, most  
useful and most noble employment of man  
- *George Washington* **//**







## CHALLENGES

---

Food Safety

Pesticide Use

Quarantine  
Requirements



# Thank you!

**Korinne Bell**

Agricultural Commissioner

[korinne.bell@ventura.org](mailto:korinne.bell@ventura.org)

815 E. Santa Barbara St  
P.O. Box 889, Santa Paula, CA 93060  
(805) 933-2415

555 Airport Way, Suite E  
Camarillo, CA 93010  
(805)388-4343 ext. 2