

ITEM 12 - ATTACHMENT A



May 9, 2025

MEMO TO: LISA DAVIS, CALTRANS HEADQUARTERS / CALTRANS D7
FROM: VENTURA COUNTY SERVICE AUTHORITY FOR FREEWAY EMERGENCIES
SUBJECT: VENTURA COUNTY CALL BOX SYSTEM DECOMMISSION & REMOVAL PLAN

BACKGROUND:

Since 1996, the Ventura County Transportation Commission (VCTC), acting in its capacity as the Service Authority for Freeway Emergencies (SAFE), has operated approximately 427 active emergency roadside call boxes in the Caltrans right-of-way.

With the proliferation of cell phones and the decline of call box usage, many SAFE agencies are reevaluating the benefit-cost of their call box systems and contemplating system removal or call box reduction. The aging of the call box technology and recent deficiencies in call box maintenance created by the acquisition of CASE Systems have accelerated the timelines for sunseting call box programs across the state.

Ventura County SAFE believes at this time call box maintenance funds should be reallocated to other Motorist Aid program areas to best serve motorists. Ventura County SAFE Board and the VCTC Executive Director request that Caltrans support the decommissioning of the call box program system-wide in Ventura County.

MOTORIST AID GUIDELINES:

According to the Call Box and Motorist Aid Guidelines, to sunset a call box program a SAFE will develop a call box removal plan and provide justification for Caltrans review and approval. Factors which warrant the need to remove call boxes on a system wide basis include:

- Significant Decreases in Call Volumes
- Administrative Issues
- Operational Issues

CALL BOX USE:

Long-run annual call box volumes have followed a downward trend with the proliferation of cell phones and improved coverage areas throughout the County. The call box statistics reflect a significant decline since the early 2000's, and 142 call boxes were permanently removed in 2017. The total number of calls for assistance in 2004 was 6,945. In Fiscal Year 2022/2023, the total number of calls for roadway assistance was 1,224, averaging more than 100 calls per month. However, in Fiscal Year 2023/2024, the total number

of calls for roadway assistance was 878, an average of 73 calls per month, a substantial reduction year-over-year in volume of motorist calls for aid (approximately 29% fewer calls).

In terms of types of calls, SAFE staff have been able to review data from partner SAFE agencies to estimate call severity. From call data provided by Capitol Valley Regional SAFE, Santa Barbara SAFE, and Orange County SAFE, staff estimate that 15-20% of call box calls result in some form of direct motorist assistance. The remainder of calls are disconnects, maintenance tests, unknown, or no help required.

At an estimated 20% of call box calls resulting in some form of assistance, the Ventura County call box program is currently averaging only 18 calls per month aiding the motorist public.

CALL BOX MAINTENANCE:

In February 2023, VC SAFE staff was informed that CASE Systems, VCTC's longtime provider of call box maintenance services and the patent owner for the proprietary call box technology deployed statewide, was acquired by Knightscope, Inc. In December 2023, Knightscope management unilaterally suspended semi-annual preventative maintenance inspections. In March 2024, Staff were informed the County's dedicated maintenance technician position had been eliminated. For over a year, Knightscope has not completed preventive maintenance obligations and has been out of contract compliance.

Knightscope management communicated to Staff that call box contracts acquired from CASE Systems are a loss center for the company, and SAFEs will need to accept reductions in maintenance visits and/or contract rate increases. Knightscope management further relayed that if the company does not profit from call box maintenance contracts, management will shutter the call box division.

Given Knightscope ownership of the patents for technology internal to the call box operations and their effective monopoly on call box maintenance services, it is unlikely procurement for a new call box maintenance contractor would result in a competitive marketplace.

CALL BOX TECHNOLOGY:

The aging of the call box hardware technology is another concern which has been expressed by SAFE agencies. It is expected that maintaining the system in the long term will become increasingly challenging and expensive.

The call box hardware relies significantly on first-generation components which are obsolete. It is uncertain if Knightscope will be able to source the parts to keep the CASE hardware running in the long term. To date, Knightscope has not presented the SAFEs with plans to improve the call box technology or deploy hardware updates.

VC SAFE Staff tasked our call box analyst consultants (Tele Tran Tek, or T-Cubed) to look at alternatives to the patented call box technology owned by Knightscope. Their findings were provided in a memo and are summarized below:

No highway call boxes, other than the current Knightscope K1, meet all the requirements of the CHP/Caltrans Call Box and Motorist Aid Guidelines, in particular those requirements related to dual voice capability, an available telephone handset and inclusion of a TTY device for ADA compatibility.

No new technologies for accessing roadside assistance were found in the literature. The primary sources for roadside assistance other than call boxes are Freeway Service Patrols and manufacturers' in-vehicle non-emergency and emergency communications. Although not currently

available for large-scale implementation, Intelligent Transportation System roadside-to-vehicle communication technology may provide new ways to access roadside assistance.

DECOMMISSION JUSTIFICATION & ALTERNATIVE USE OF SAFE FUNDS:

In addition to declining call box usage and operational issues, justification for sunseting the call box program can be made on a cost/benefit basis. Caltrans SAFE Liaison expressed to the 2024 *Statewide Motorist Aid Committee* that in their professional judgement, the cost to maintain call box systems statewide now exceed benefits to motorists.

Ventura County SAFE staff estimate that about 20% of call box calls result in some direct motorist assistance, or about 18 calls per month. At the current call volume, VCTC pays about \$1,500 per call box call which results in direct motorist assistance. For comparison, VCTC pays approximately \$334 per Freeway Service Patrol direct motorist assist (resulting in restarting or towing a vehicle) and the three FSP beats in Ventura County serve approximately 400-700 motorists per month.

In VCTC's assessment, there are at least three Motorist Aid program areas where SAFE funds can be better deployed to serve motorists travelling on the Ventura County highway network.

- First, the 511 system is considered a natural evolution of motorist aid services post call boxes. Generally, there is strong cellular coverage throughout the county covering all freeways and highways: [Call Box & Cell Coverage Ventura County](#). While Ventura County is a member of the 511 system, the availability of the 511 call service is not well advertised locally. SAFE funds can be used to expand 511 signage on Ventura County freeways and highways.
- Second, sunseting the call box system allows Ventura County SAFE to expand Freeway Service Patrol services. With the funds made available, FSP services could be expanded to remaining portions of US101, SR23 and possibly portions of SR126.
- Third, Ventura County SAFE plans to invest in improved enforcement of traffic laws on Ventura County freeways and highways. Traffic collision rates are a persistent and significant challenge for freeway and highway safety in Southern California. SAFE staff intend to pursue CHP extra work services contracts for select highways in Ventura County. SR 1, SR126, and rural portions of SR118 are candidate highways which SAFE staff believe can benefit greatly from enhanced traffic enforcement.

REMOVAL PLAN:

Decommissioning the call box program will begin with VC SAFE procuring a contractor to bag all call boxes prior to ending call box maintenance services and terminating cellular service. Due to the size of the call box system, VC SAFE staff may work with the contractor to plan a phased removal by highway. To ensure the call box system is decommissioned in a safe and orderly manner, VCTC may need to amend the existing agreement to extend the period of performance with Knightscope to ensure continuity of service until bagging can be completed.

The contractor will be responsible for obtaining all necessary permits from Caltrans District 7 to perform the work in Caltrans right-of-way. Once all call boxes have been bagged and permissions have been granted by Caltrans, the contractor will proceed to remove the call boxes and restore the Caltrans right-of-way to pre-existing conditions. The proposed work shall consist of removing all call box related improvements including, but not limited to, poles with call boxes, signage and solar panels, and concrete pads in landscaped areas where present. The call box pole base will be cut to 12 inches below grade to maintain the integrity of surface. All call box material will be removed and backfilled with existing material and graded

to match surrounding grades and to avoid tripping hazards. The contractor will be responsible for disposal of all call box waste materials.

VCTC requests Caltrans support the decommissioning of the call box program system-wide in Ventura County. A contractor scope-of-work is attached for review (Attachment I).

ATTACHMENT I

Ventura County Transportation Commission Call Box Removal Scope of Work IFB: SAFE-2025

Scope of Work – Removal of Ventura County Roadside Call Box System

The Ventura County Transportation Commission is soliciting bids for the removal of 427 Motorist Aid Call Boxes located throughout Ventura County. All call boxes in Ventura County are 4G cellular enabled and powered by mounted solar panels. The call boxes are spaced approximately ½ to 1 mile on the shoulders of the highway system countywide within the Caltrans ROW.

The scope of work includes providing all necessary labor, equipment, and materials to remove the call boxes and restore the sites to their original condition. Additionally, the contractor will be responsible for the disposal or recycling of materials removed.

Project Details

The 427 call boxes are distributed across eight (8) highways in Ventura County, as detailed in Appendix A and B. The contractor will remove all call boxes, dispose of the waste products, and remediate the sites to original conditions. There are seven (7) site types of call box installations with varying remediation needs (see Appendix D). Call box removals will occur in a phased approach by highway as directed by VCTC.

Call box locations are provided as maps in Appendix A and as a linked web map: [Call Box Locations SOW SAFE-2025](#). The distribution of call boxes is as follows:

Ventura County Call Boxes by Highway & Site Type

	A	D	E	F	L	M	
Freeway / Highway	At Grade, In Soil	Wall Mount	Behind Barrier	Behind Guardrail	Behind Curb	At Grade, Pavement	Total
SR1	16			4	14	9	43
SR23	11	3		7	14	7	42
SR33	4				18	2	24
SR34	3						3
US101	38	3	1	19	44	24	129
SR118	11	2		16	29	5	63
SR126	27			18	37	18	100
SR150	14				2	7	23
Total	124	8	1	64	158	66	427

Scope of Work Requirements

1. Bagging Call Boxes

- Prior to removal, all call boxes in the Ventura County system must be bagged to indicate discontinuation of service to the public.
- Bagging the call boxes requires covering signage and yellow call box housing (see Appendix D).

2. Removal of Call Boxes and Associated Equipment

- The contractor shall remove all call boxes and associated materials, as specified for site types A, D, E, F, L, and M (see Appendix D).
- Call box removal shall include steel pole standards, signs, solar panels, electrical wiring, lead acid batteries, concrete foundations, including bar reinforcement, and any associated items.

3. Site Restoration

- **Pole Bases:** After removing the steel pole standards from their mounting flanges/bases, any remaining underground base structures must be removed to a minimum of 12 inches below existing grade and backfilled with soil to restore the site to its original appearance.
- **Pads:** For site type A, remove any fiberglass or concrete standing pads and backfill with soil. For site types B and C, remove any fiberglass or concrete standing pads, handrails and wood support framing and back fill with soil.

4. Disposal and Recycling

- The contractor must aggregate all removed materials and dispose of or recycle them as appropriate.

5. Traffic Control

- All contractor vehicles are to be parked, and removal to occur in daylight, out of the way of traffic and at least six feet from the traveled way. If this cannot be done because of the location of the call box, then traffic control will be needed consistent with Caltrans Standard Plans T9 to T13B, as appropriate to each site location.

6. Schedule

- Contractor shall prepare a schedule of task completion phased by highway for VCTC review and approval.
- Work on call box removal is to be completed by September 1, 2025.

Call Box Specifications

Below are the approximate weights of typical call box components:

CALL BOX ITEM DESCRIPTION	WEIGHT (lbs)
4" Pole (168" high), schedule 40 galvanized steel pipe with four bolt slip base.	135
Yellow Call Box (includes electronic motherboard, modem and lead acid battery)	47
Call Box Signs	19
Solar Panel	6
Foundation Steel Auger (44" deep)	49 (plus weight of concrete)
Fiberglass Pad or Concrete 36x36	25/100 lbs (only located on A, B & C sites)
TOTAL	281/356 lbs

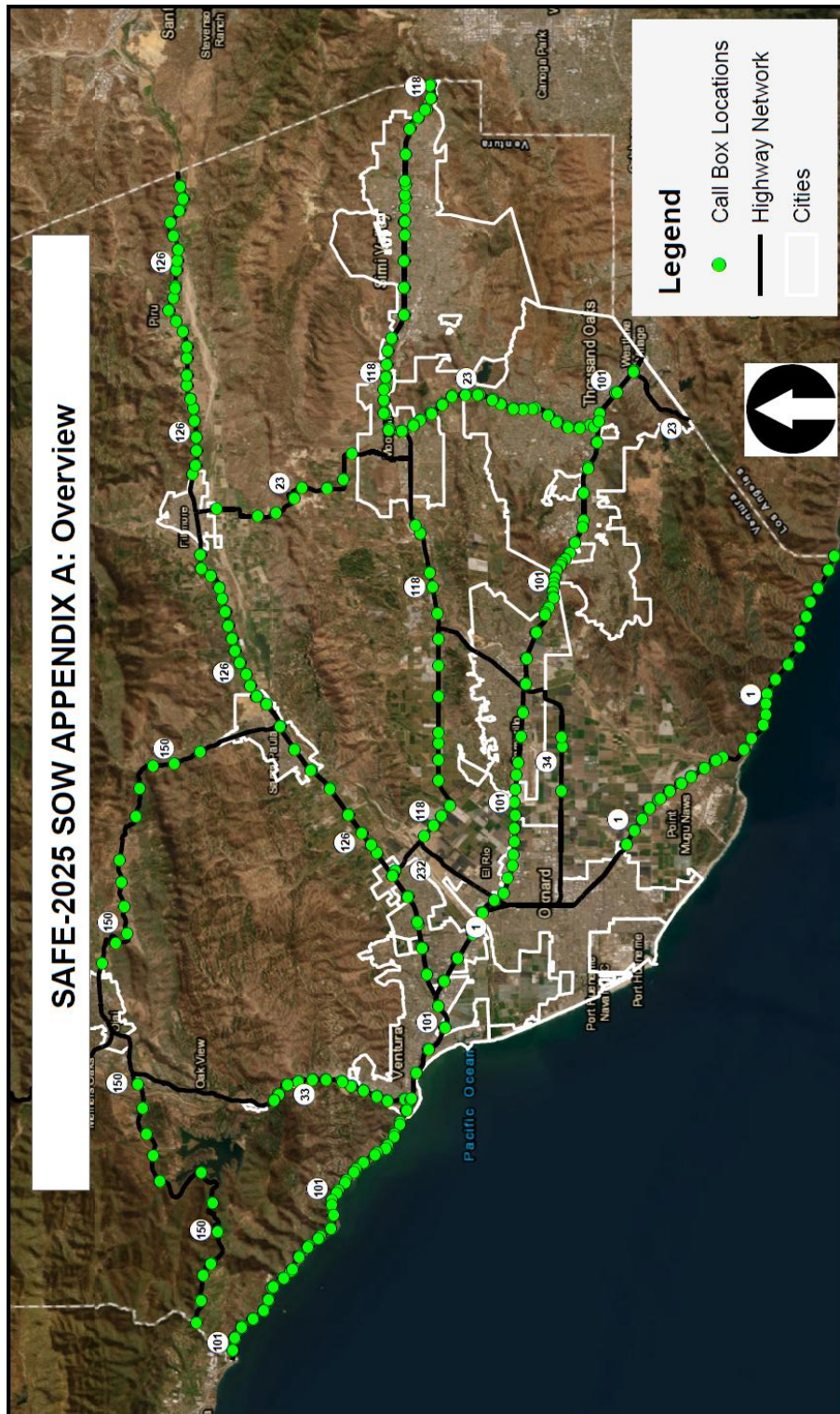
Documentation and Reporting

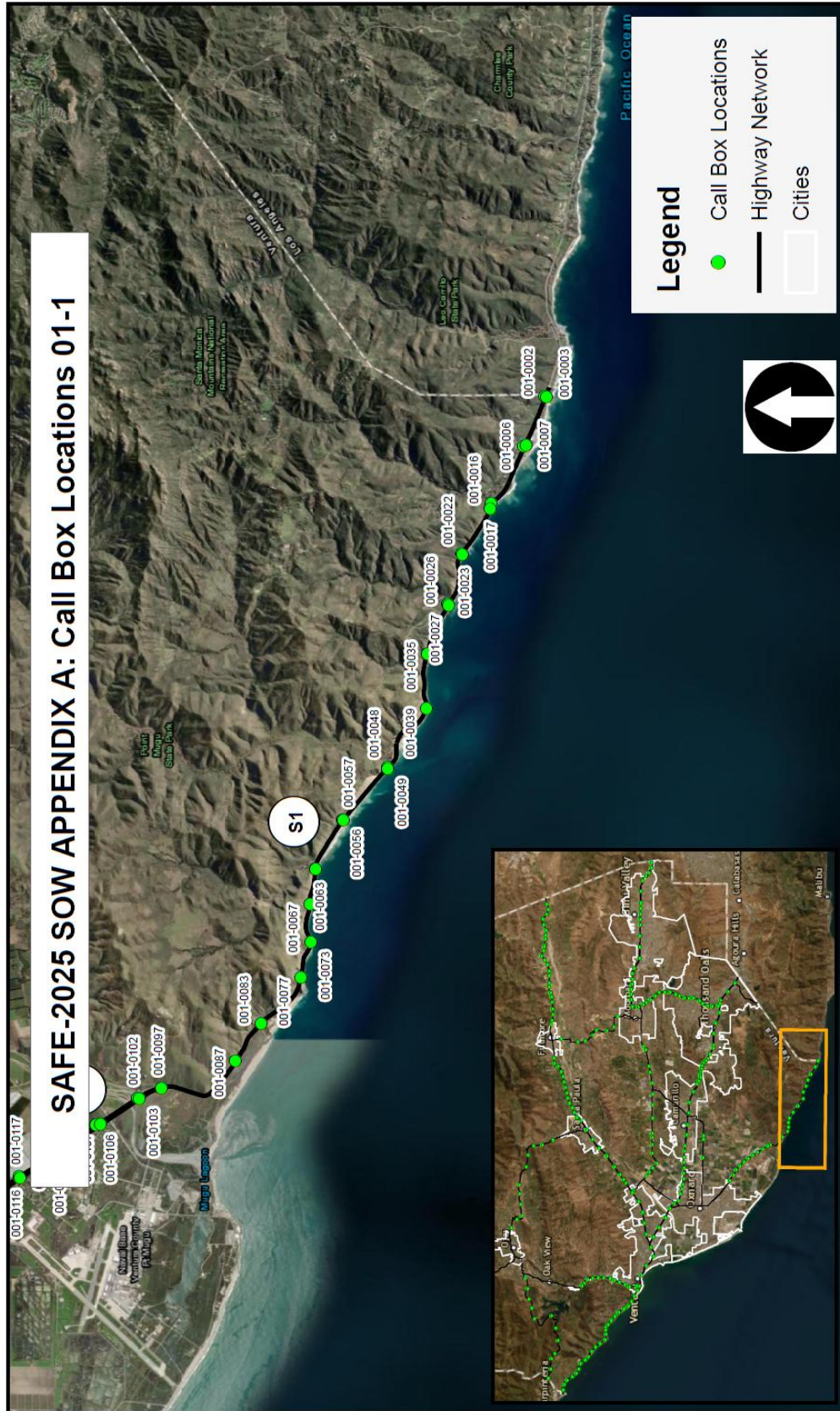
The contractor is required to document the removal process and provide the following:

1. **Photos:** Before and after pictures of each call box location, with the call box sign number clearly displayed on a dry-erase board in the "after" photo.
2. **Electronic Report:** An Excel-based field report (template provided) detailing notes for each location.
3. **Daily Updates:** At the end of each workday, the contractor must email VCTC a summary of completed removals, including pictures and a list of removed call boxes. Please identify location of disposal or recycling.

APPENDIX A – MAPS

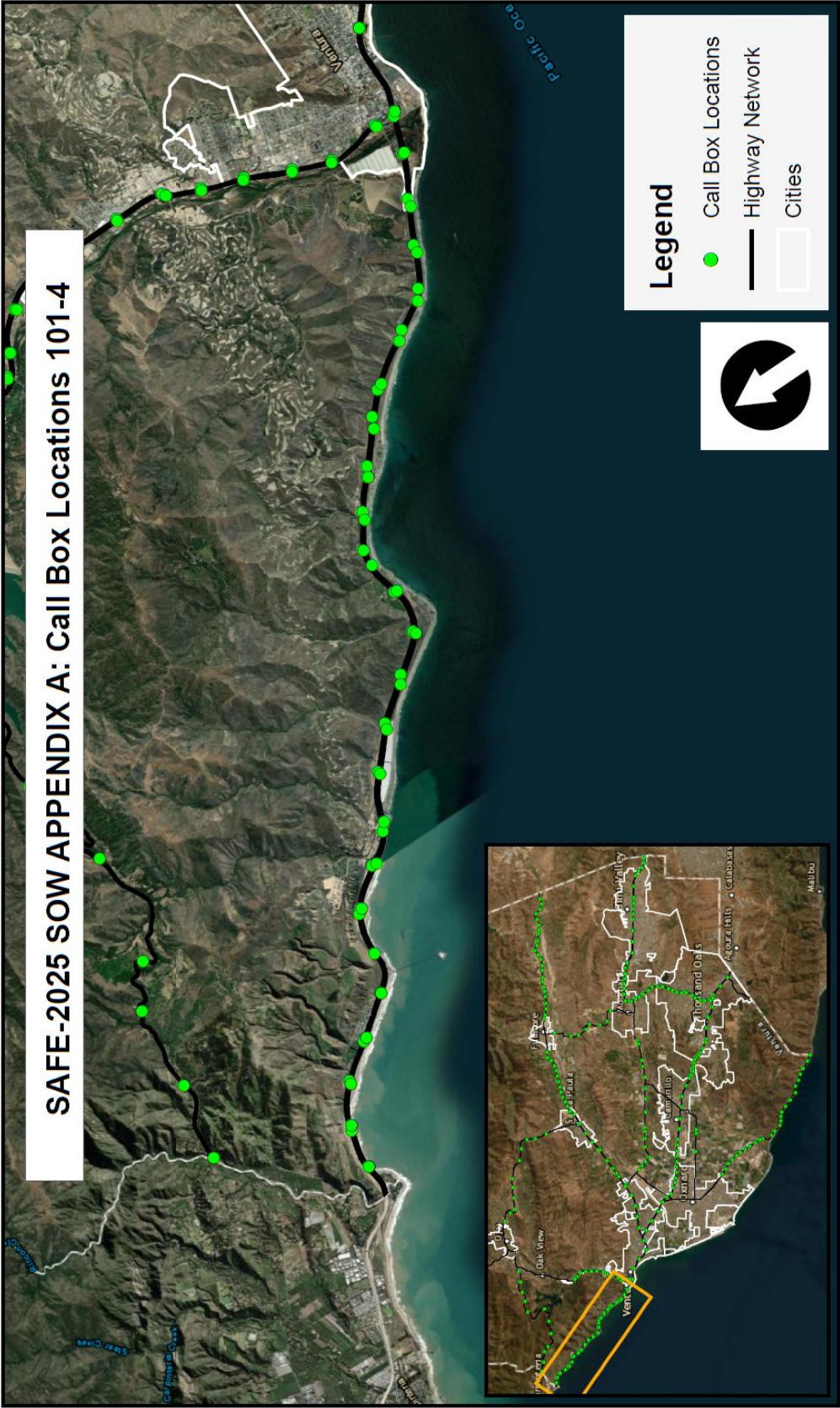
<https://vctc.maps.arcgis.com/apps/mapviewer/index.html?webmap=d3b08eccfd0842e29008a3d4ec6aad93>



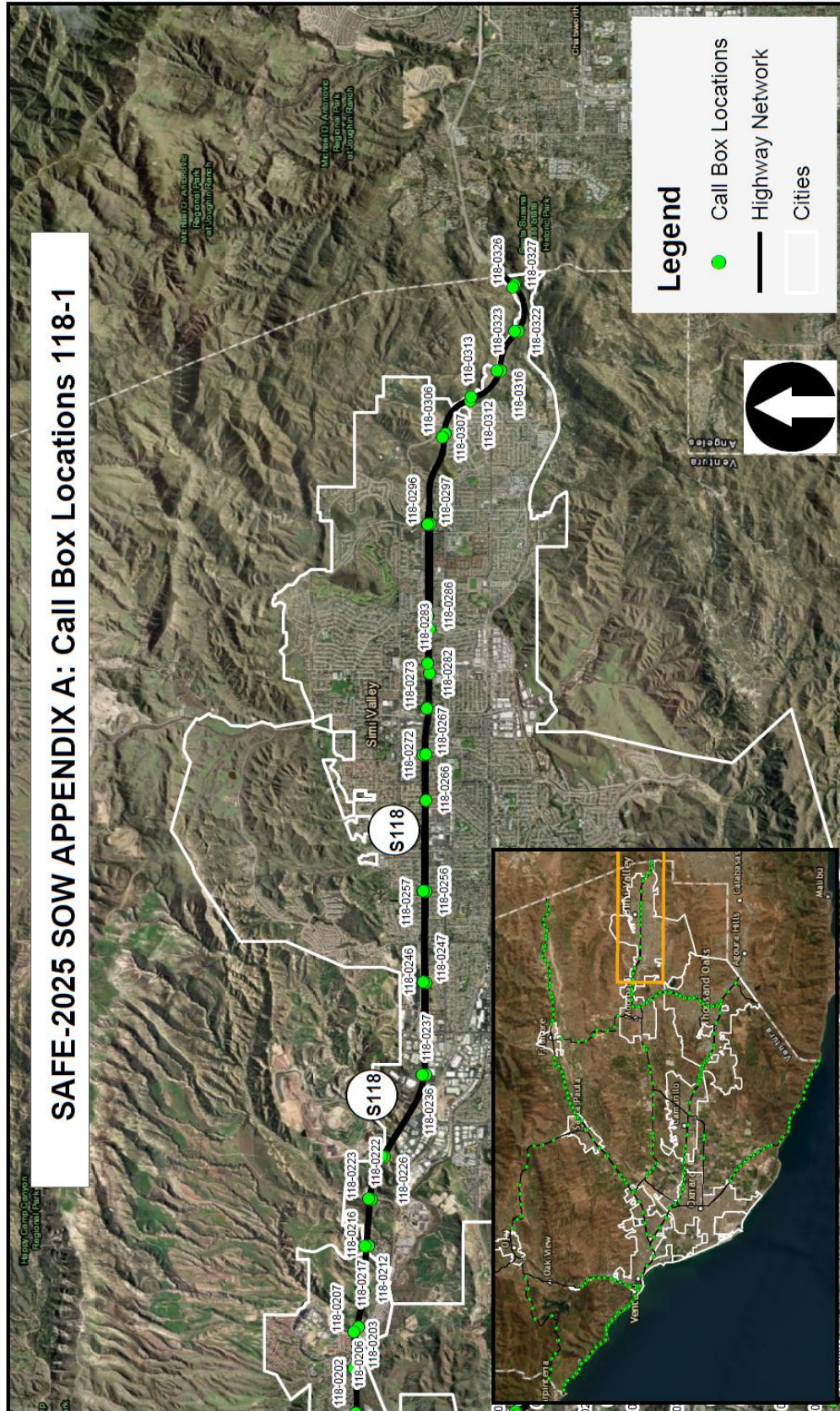






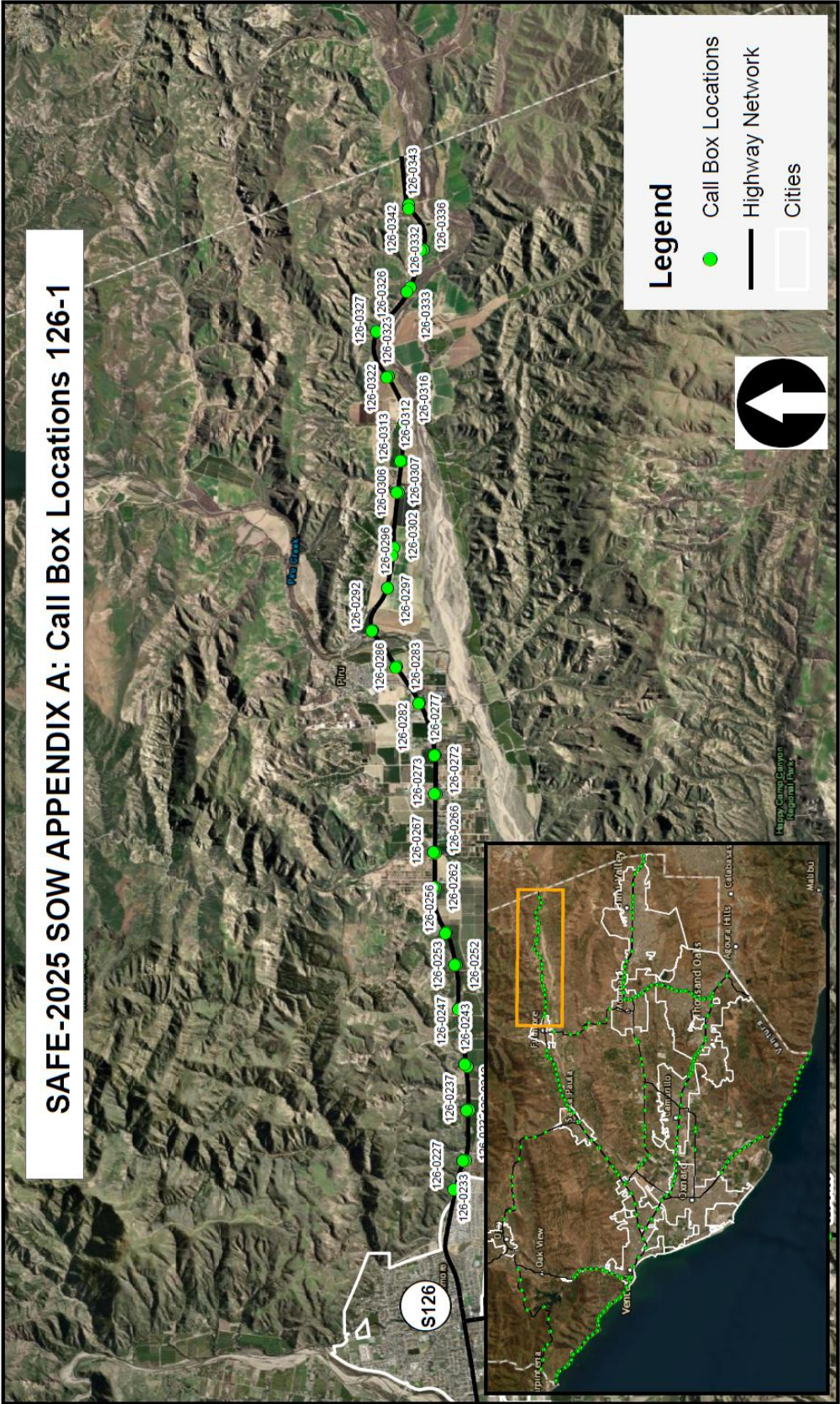


SAFE-2025 SOW APPENDIX A: Call Box Locations 118-1





SAFE-2025 SOW APPENDIX A: Call Box Locations 126-1





SAFE-2025 SOW APPENDIX A: Call Box Locations 126-3

Legend

- Call Box Locations
- Highway Network
- Cities

The map displays the Santa Monica area with the following call box locations marked along Highway 126-3:

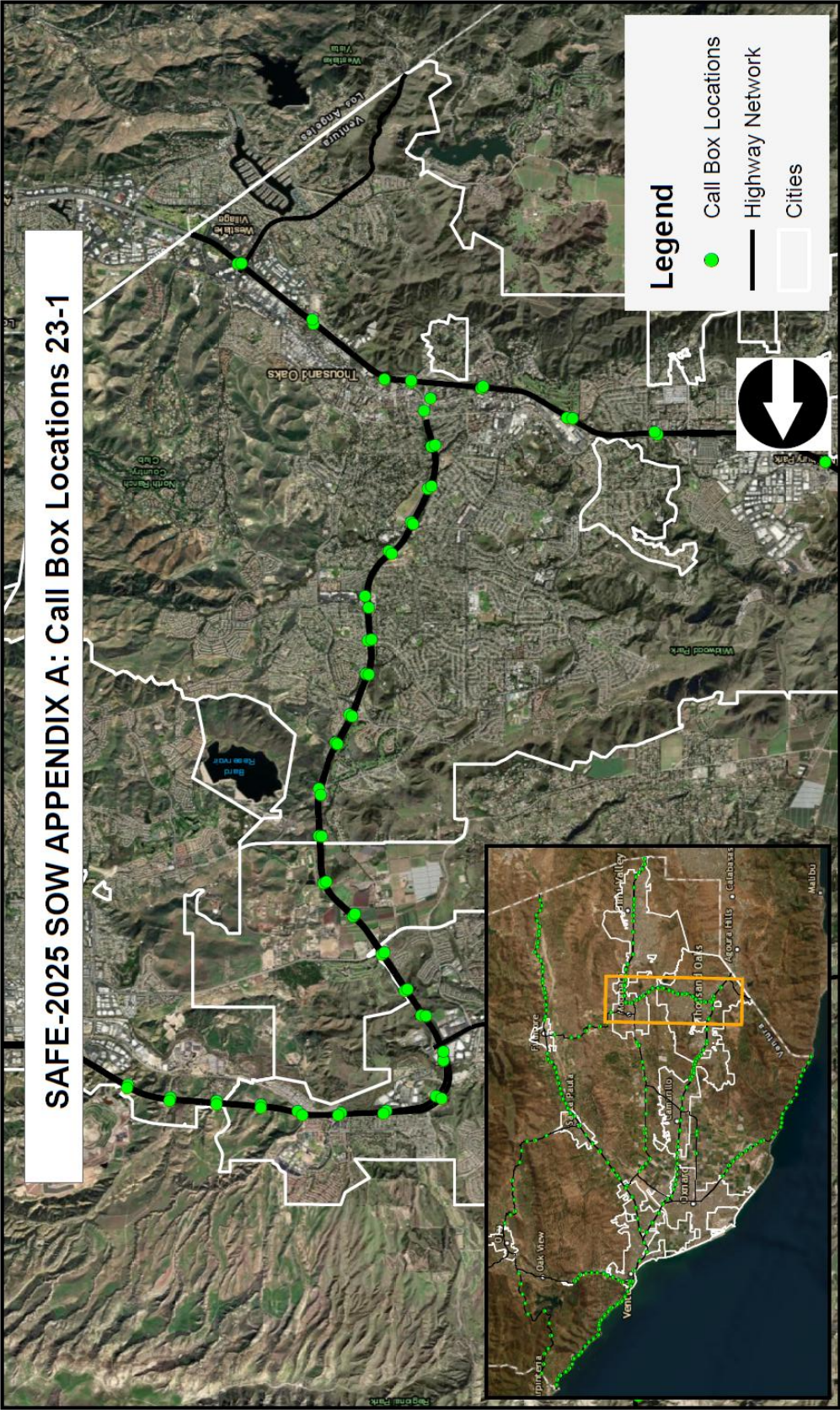
- 101-0256
- 101-0257
- 101-0258
- 101-0259
- 101-0260
- 101-0261
- 101-0262
- 101-0263
- 101-0264
- 101-0265
- 101-0266
- 101-0267
- 101-0268
- 101-0269
- 101-0270
- 101-0271
- 101-0272
- 101-0273
- 101-0274
- 101-0275
- 101-0276
- 101-0277
- 101-0278
- 101-0279
- 101-0280
- 101-0281
- 101-0282
- 101-0283
- 101-0284
- 101-0285
- 101-0286
- 101-0287
- 101-0288
- 101-0289
- 101-0290
- 101-0291
- 101-0292
- 101-0293
- 101-0294
- 101-0295
- 101-0296
- 101-0297
- 101-0298
- 101-0299
- 101-0300
- 101-0301
- 101-0302
- 101-0303
- 101-0304
- 101-0305
- 101-0306
- 101-0307
- 101-0308
- 101-0309
- 101-0310
- 101-0311
- 101-0312
- 101-0313
- 101-0314
- 101-0315
- 101-0316
- 101-0317
- 101-0318
- 101-0319
- 101-0320
- 101-0321
- 101-0322
- 101-0323
- 101-0324
- 101-0325
- 101-0326
- 101-0327
- 101-0328
- 101-0329
- 101-0330
- 101-0331
- 101-0332
- 101-0333
- 101-0334
- 101-0335
- 101-0336
- 101-0337
- 101-0338
- 101-0339
- 101-0340
- 101-0341
- 101-0342
- 101-0343
- 101-0344
- 101-0345
- 101-0346
- 101-0347
- 101-0348
- 101-0349
- 101-0350
- 101-0351
- 101-0352
- 101-0353
- 101-0354
- 101-0355
- 101-0356
- 101-0357
- 101-0358
- 101-0359
- 101-0360
- 101-0361
- 101-0362
- 101-0363
- 101-0364
- 101-0365
- 101-0366
- 101-0367
- 101-0368
- 101-0369
- 101-0370
- 101-0371
- 101-0372
- 101-0373
- 101-0374
- 101-0375
- 101-0376
- 101-0377
- 101-0378
- 101-0379
- 101-0380
- 101-0381
- 101-0382
- 101-0383
- 101-0384
- 101-0385
- 101-0386
- 101-0387
- 101-0388
- 101-0389
- 101-0390
- 101-0391
- 101-0392
- 101-0393
- 101-0394
- 101-0395
- 101-0396
- 101-0397
- 101-0398
- 101-0399
- 101-0400
- 101-0401
- 101-0402
- 101-0403
- 101-0404
- 101-0405
- 101-0406
- 101-0407
- 101-0408
- 101-0409
- 101-0410
- 101-0411
- 101-0412
- 101-0413
- 101-0414
- 101-0415
- 101-0416
- 101-0417
- 101-0418
- 101-0419
- 101-0420
- 101-0421
- 101-0422
- 101-0423
- 101-0424
- 101-0425
- 101-0426
- 101-0427
- 101-0428
- 101-0429
- 101-0430
- 101-0431
- 101-0432
- 101-0433
- 101-0434
- 101-0435
- 101-0436
- 101-0437
- 101-0438
- 101-0439
- 101-0440
- 101-0441
- 101-0442
- 101-0443
- 101-0444
- 101-0445
- 101-0446
- 101-0447
- 101-0448
- 101-0449
- 101-0450
- 101-0451
- 101-0452
- 101-0453
- 101-0454
- 101-0455
- 101-0456
- 101-0457
- 101-0458
- 101-0459
- 101-0460
- 101-0461
- 101-0462
- 101-0463
- 101-0464
- 101-0465
- 101-0466
- 101-0467
- 101-0468
- 101-0469
- 101-0470
- 101-0471
- 101-0472
- 101-0473
- 101-0474
- 101-0475
- 101-0476
- 101-0477
- 101-0478
- 101-0479
- 101-0480
- 101-0481
- 101-0482
- 101-0483
- 101-0484
- 101-0485
- 101-0486
- 101-0487
- 101-0488
- 101-0489
- 101-0490
- 101-0491
- 101-0492
- 101-0493
- 101-0494
- 101-0495
- 101-0496
- 101-0497
- 101-0498
- 101-0499
- 101-0500
- 101-0501
- 101-0502
- 101-0503
- 101-0504
- 101-0505
- 101-0506
- 101-0507
- 101-0508
- 101-0509
- 101-0510
- 101-0511
- 101-0512
- 101-0513
- 101-0514
- 101-0515
- 101-0516
- 101-0517
- 101-0518
- 101-0519
- 101-0520
- 101-0521
- 101-0522
- 101-0523
- 101-0524
- 101-0525
- 101-0526
- 101-0527
- 101-0528
- 101-0529
- 101-0530
- 101-0531
- 101-0532
- 101-0533
- 101-0534
- 101-0535
- 101-05

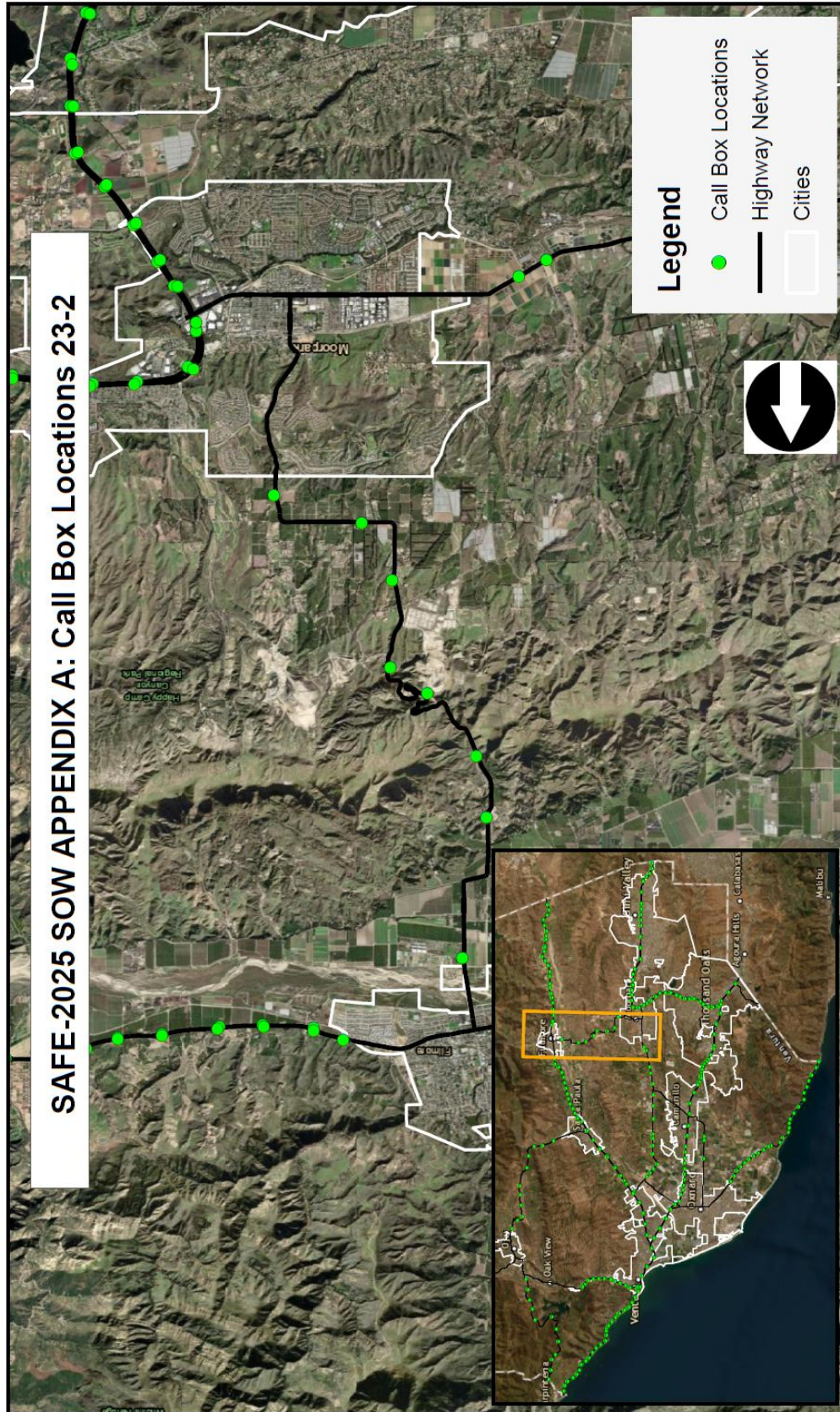
SAFE-2025 SOW APPENDIX A: Call Box Locations 150-1

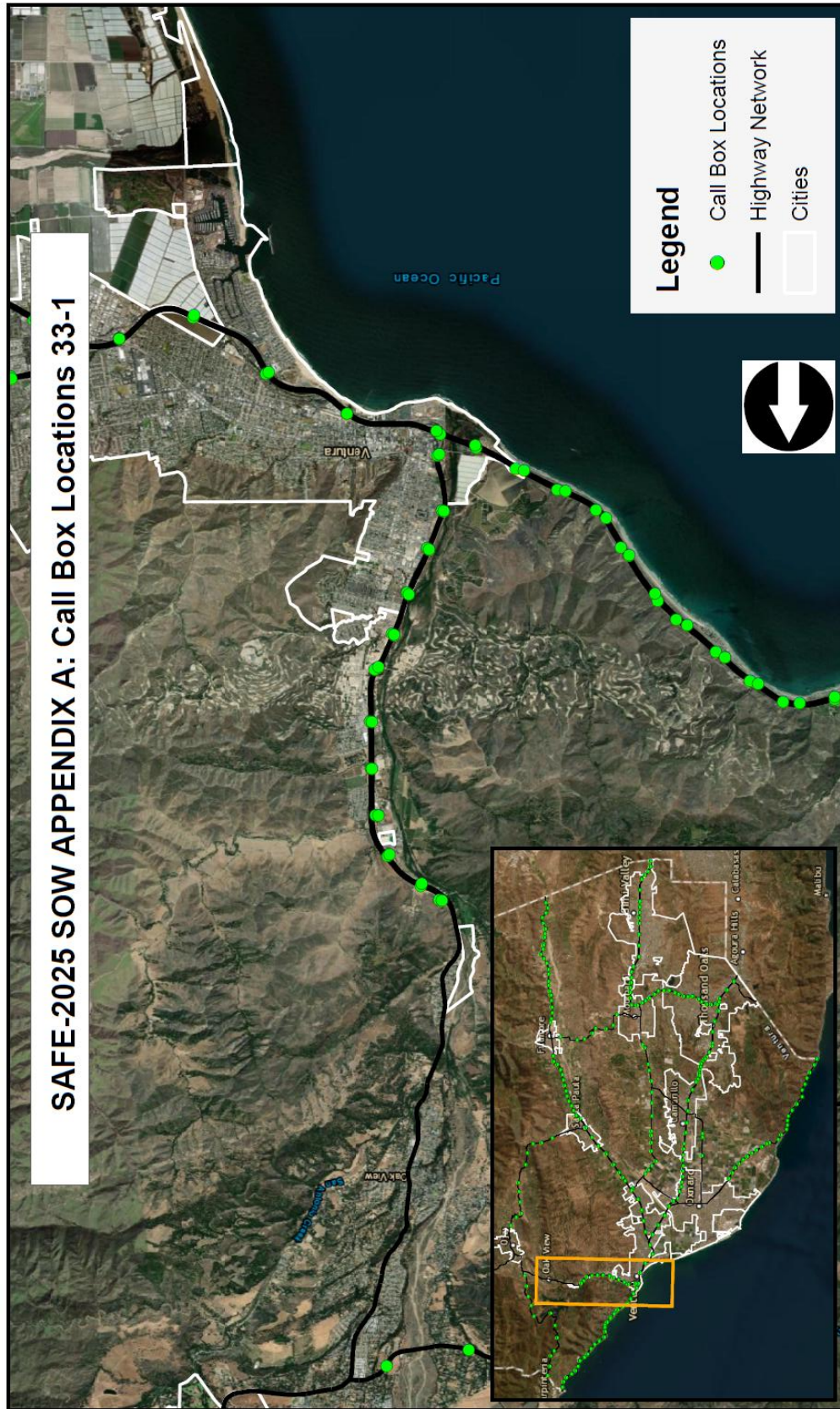
Legend

- Call Box Locations
- Highway Network
- Cities

Map showing Highway 150 and surrounding areas. Call box locations are marked with green dots along the highway. The map includes a legend for Call Box Locations, Highway Network, and Cities. An inset map shows the location of Highway 150 within the larger region of the San Joaquin Hills.







APPENDIX B – Call Box Full Information List

SAFE-2025 SOW APPENDIX B						
CALL BOX SIGN NO.	HWY	PHONE	STATUS	SITE TYPE	LATITUDE	LONGITUDE
VE-001-0002	1	8202045824	Active	L	34.04731	-118.94648
VE-001-0003	1	8202045823	Active	A	34.04706	-118.94659
VE-001-0006	1	8202045822	Active	L	34.05072	-118.95605
VE-001-0007	1	8202045821	Active	L	34.05036	-118.95585
VE-001-0016	1	8202045820	Active	M	34.05587	-118.96713
VE-001-0017	1	8202045819	Active	M	34.05606	-118.96813
VE-001-0022	1	8202045852	Active	A	34.06068	-118.97681
VE-001-0023	1	8202045851	Active	A	34.06054	-118.97692
VE-001-0026	1	8202045850	Active	M	34.06283	-118.98652
VE-001-0027	1	8202045869	Active	A	34.06265	-118.98667
VE-001-0035	1	8202045868	Active	A	34.06599	-118.99607
VE-001-0039	1	8202045867	Active	F	34.06617	-119.00654
VE-001-0048	1	8202045866	Active	A	34.07245	-119.01782
VE-001-0049	1	8202045865	Active	F	34.072433	-119.018151
VE-001-0056	1	8202045864	Active	M	34.07957	-119.02798
VE-001-0057	1	8202045863	Active	A	34.07944	-119.02805
VE-001-0063	1	8202045862	Active	A	34.08384	-119.0375
VE-001-0067	1	8202045861	Active	F	34.084767	-119.044267
VE-001-0073	1	8202045860	Active	F	34.084667	-119.051533
VE-001-0077	1	8202045849	Active	A	34.086233	-119.0583
VE-001-0083	1	8202045848	Active	A	34.092533	-119.0672
VE-001-0087	1	8202045847	Active	A	34.096617	-119.074417
VE-001-0097	1	8202045846	Active	M	34.108383	-119.079617
VE-001-0102	1	8202045845	Active	M	34.1123	-119.081533
VE-001-0103	1	8202045859	Active	L	34.111983	-119.081683
VE-001-0106	1	8202045858	Active	A	34.11885	-119.0867
VE-001-0107	1	8202045857	Active	A	34.118167	-119.0866
VE-001-0112	1	8202045856	Active	L	34.125467	-119.092017
VE-001-0113	1	8202045855	Active	A	34.125267	-119.0923
VE-001-0116	1	8202045854	Active	L	34.131183	-119.0966
VE-001-0117	1	8202045853	Active	L	34.131017	-119.096867
VE-001-0122	1	8202045889	Active	L	34.1376	-119.1017
VE-001-0123	1	8202045888	Active	L	34.1374	-119.101967
VE-001-0126	1	8202045887	Active	L	34.14355	-119.107517
VE-001-0127	1	8202045886	Active	L	34.142683	-119.106983
VE-001-0132	1	8202045885	Active	L	34.148483	-119.113133
VE-001-0133	1	8202045884	Active	M	34.148283	-119.11335
VE-001-0136	1	8202045883	Active	L	34.1527	-119.120067
VE-001-0137	1	8202045882	Active	M	34.152467	-119.120267
VE-001-0142	1	8202045880	Active	A	34.156733	-119.127783
VE-001-0143	1	8202045896	Active	M	34.156383	-119.128
VE-001-0146	1	8202045895	Active	A	34.161317	-119.137217
VE-001-0147	1	8202045894	Active	L	34.160883	-119.137217
VE-023-0036	23	8202045892	Active		34.1808	-118.860133
VE-023-0037	23	8202045891	Active		34.178817	-118.861283
VE-023-0042	23	8202045890	Active	L	34.186483	-118.86155
VE-023-0043	23	8202045879	Active	F	34.186283	-118.862167
VE-023-0046	23	8202045878	Active	A	34.193233	-118.860833
VE-023-0047	23	8202045877	Active	L	34.19285	-118.861567
VE-023-0052	23	8202045876	Active	A	34.198633	-118.857583
VE-023-0053	23	8202045875	Active	L	34.198883	-118.858033
VE-023-0056	23	8202045874	Active	D	34.20325	-118.853333
VE-023-0057	23	8202045873	Active	A	34.203667	-118.853767
VE-023-0062	23	8202045872	Active	M	34.2105	-118.848683

SAFE-2025 SOW APPENDIX B

CALL BOX SIGN NO.	HWY	PHONE	STATUS	SITE TYPE	LATITUDE	LONGITUDE
VE-023-0063	23	8202045881	Active	L	34.212283	-118.849333
VE-023-0066	23	8202045919	Active	D	34.21755	-118.84925
VE-023-0067	23	8202045918	Active	D	34.2174	-118.8499
VE-023-0072	23	8202045917	Active	L	34.2229	-118.848867
VE-023-0073	23	8202045916	Active	F	34.222983	-118.849433
VE-023-0076	23	8202045915	Active	L	34.2294	-118.845667
VE-023-0077	23	8202045914	Active	A	34.229683	-118.8462
VE-023-0082	23	8202045913	Active	F	34.233933	-118.84285
VE-023-0083	23	8202045912	Active	A	34.234133	-118.843417
VE-023-0086	23	8202045911	Active	F	34.241267	-118.839767
VE-023-0087	23	8202045910	Active	A	34.242267	-118.840117
VE-023-0092	23	8202045923	Active	F	34.24885	-118.839683
VE-023-0093	23	8202045922	Active	F	34.2489	-118.8403
VE-023-0096	23	8202045921	Active	A	34.256417	-118.840617
VE-023-0097	23	8202045920	Active	L	34.2562	-118.841183
VE-023-0102	23	8202045909	Active	L	34.26175	-118.846317
VE-023-0103	23	8202045908	Active	L	34.261383	-118.846717
VE-023-0106	23	8202045907	Active	L	34.26785	-118.851883
VE-023-0107	23	8202045906	Active	L	34.267533	-118.852483
VE-023-0112	23	8202045905	Active	A	34.273667	-118.856433
VE-023-0113	23	8202045904	Active	L	34.2734	-118.85695
VE-023-0116	23	8202045903	Active	A	34.27755	-118.8596
VE-023-0117	23	8202045902	Active	L	34.277633	-118.8605
VE-023-0153	23	8202045901	Active	M	34.310967	-118.878983
VE-023-0165	23	8202045900	Active	M	34.315417	-118.89605
VE-023-0175	23	8202045898	Active	M	34.324483	-118.901883
VE-023-0186	23	8202045934	Active	M	34.3384	-118.901417
VE-023-0196	23	8202045932	Active	M	34.342533	-118.9086
VE-023-0209	23	8202045931	Active	F	34.35255	-118.918
VE-023-0219	23	8202045930	Active	M	34.362333	-118.92
VE-023-0233	23	8202045948	Active	L	34.384683	-118.9154
VE-033-0002	33	8202049254	Active	L	34.28245	-119.30531
VE-033-0003	33	8202049253	Active	L	34.28229	-119.30563
VE-033-0012	33	8202049252	Active	A	34.291267	-119.306183
VE-033-0013	33	8202049251	Active	M	34.291417	-119.306567
VE-033-0016	33	8202049269	Active	L	34.297317	-119.303333
VE-033-0017	33	8202049268	Active	A	34.297517	-119.303717
VE-033-0022	33	8202049267	Active	L	34.304417	-119.299433
VE-033-0023	33	8202049266	Active	M	34.304683	-119.2998
VE-033-0026	33	8202049265	Active	L	34.311017	-119.296533
VE-033-0027	33	8202049264	Active	L	34.311183	-119.296933
VE-033-0032	33	8202049263	Active	A	34.316733	-119.29315
VE-033-0033	33	8202049262	Active	L	34.316333	-119.293983
VE-033-0036	33	8202049261	Active	L	34.325017	-119.292283
VE-033-0037	33	8202049260	Active	L	34.32505	-119.292683
VE-033-0042	33	8202049275	Active	L	34.3325	-119.2924
VE-033-0043	33	8202049274	Active	L	34.332567	-119.292767
VE-033-0046	33	8202049273	Active	L	34.339967	-119.293517
VE-033-0047	33	8202049272	Active	L	34.34	-119.293983
VE-033-0052	33	8202049271	Active	L	34.346483	-119.295833
VE-033-0053	33	8202049270	Active	L	34.346267	-119.296083
VE-033-0056	33	8202049259	Active	L	34.3513	-119.302183
VE-033-0057	33	8202049258	Active	L	34.3509	-119.302333
VE-033-0062	33	8202049257	Active	L	34.353467	-119.30575

SAFE-2025 SOW APPENDIX B

CALL BOX SIGN NO.	HWY	PHONE	STATUS	SITE TYPE	LATITUDE	LONGITUDE
VE-033-0063	33	8202049256	Active	A	34.3536	-119.306217
VE-034-0086	34	8202049255	Active	A	34.196467	-119.10175
VE-034-0102	34	8202049289	Active	A	34.1963	-119.0724
VE-034-0105	34	8202049287	Active	A	34.19635	-119.066167
VE-101-0006	101	8202049286	Active	A	34.1572	-118.824
VE-101-0007	101	8202049285	Active	L	34.157133	-118.824783
VE-101-0016	101	8202049284	Active	L	34.166817	-118.838717
VE-101-0017	101	8202049283	Active	L	34.166183	-118.838467
VE-101-0028	101	8202049282	Active	L	34.1762	-118.857633
VE-101-0029	101	8202049281	Active	A	34.175917	-118.8576
VE-101-0036	101	8202049280	Active	L	34.177133	-118.8712
VE-101-0037	101	8202049299	Active	A	34.1769	-118.87155
VE-101-0046	101	8202049298	Active	F	34.18185	-118.887767
VE-101-0047	101	8202049297	Active	A	34.181967	-118.888833
VE-101-0056	101	8202049296	Active	F	34.184567	-118.905133
VE-101-0057	101	8202049295	Active	L	34.1842	-118.904767
VE-101-0066	101	8202049294	Active	L	34.184467	-118.92315
VE-101-0067	101	8202049293	Active	A	34.18505	-118.92765
VE-101-0076	101	8202049292	Active	A	34.18895	-118.937767
VE-101-0077	101	8202049291	Active	M	34.18895	-118.937767
VE-101-0078	101	8202049290	Active	A	34.192217	-118.944433
VE-101-0079	101	8202049279	Active	L	34.191933	-118.944583
VE-101-0082	101	8202049278	Active	A	34.194417	-118.948433
VE-101-0083	101	8202049303	Active	M	34.194183	-118.948633
VE-101-0084	101	8202049301	Active	F	34.196467	-118.9511
VE-101-0085	101	8202049300	Active	M	34.19715	-118.952717
VE-101-0086	101	8202049288	Active	A	34.1993	-118.955617
VE-101-0087	101	8202049330	Active	L	34.1993	-118.9564
VE-101-0094	101	8202049319	Active	F	34.20045	-118.96045
VE-101-0095	101	8202049318	Active	A	34.200067	-118.961133
VE-101-0096	101	8202049317	Active	F	34.201017	-118.96465
VE-101-0097	101	8202049316	Active	A	34.200883	-118.967183
VE-101-0098	101	8202049314	Active	A	34.201383	-118.970417
VE-101-0099	101	8202049313	Active	L	34.201167	-118.970633
VE-101-0102	101	8202049312	Active	A	34.201383	-118.9734
VE-101-0103	101	8202049311	Active	F	34.20095	-118.97425
VE-101-0106	101	8202049310	Active	A	34.203917	-118.980667
VE-101-0107	101	8202049329	Active	D	34.20335	-118.980733
VE-101-0108	101	8202049328	Active	A	34.205617	-118.984167
VE-101-0109	101	8202049327	Active	L	34.20525	-118.985217
VE-101-0116	101	8202049326	Active	F	34.210483	-118.997083
VE-101-0117	101	8202049325	Active	L	34.21005	-118.997
VE-101-0126	101	8202049324	Active	F	34.216117	-119.014267
VE-101-0127	101	8202049323	Active	D	34.215567	-119.0143
VE-101-0136	101	8202049322	Active	L	34.2163	-119.030917
VE-101-0137	101	8202049321	Active	A	34.21585	-119.0309
VE-101-0146	101	8202049320	Active	A	34.217733	-119.049167
VE-101-0147	101	8202049309	Active	L	34.217417	-119.050033
VE-101-0156	101	8202049308	Active	A	34.219033	-119.0661
VE-101-0157	101	8202049307	Active	M	34.218567	-119.065733
VE-101-0166	101	8202049306	Active	A	34.220033	-119.083
VE-101-0167	101	8202049315	Active	M	34.22115	-119.09115
VE-101-0176	101	8202049336	Active	M	34.221567	-119.100717
VE-101-0177	101	8202049335	Active	A	34.222167	-119.1092

SAFE-2025 SOW APPENDIX B

CALL BOX SIGN NO.	HWY	PHONE	STATUS	SITE TYPE	LATITUDE	LONGITUDE
VE-101-0186	101	8202049324	Active	M	34.221733	-119.117717
VE-101-0187	101	8202049333	Active	L	34.222283	-119.12645
VE-101-0196	101	8202049331	Active	M	34.222083	-119.135317
VE-101-0197	101	8202049349	Active	A	34.222983	-119.1439
VE-101-0206	101	8202049348	Active	M	34.223283	-119.1509
VE-101-0207	101	8202049347	Active	A	34.22565	-119.15935
VE-101-0216	101	8202049346	Active	L	34.228133	-119.169333
VE-101-0217	101	8202049345	Active	D	34.2333	-119.173983
VE-101-0226	101	8202049344	Active	L	34.23998	-119.182
VE-101-0227	101	8202049343	Active	L	34.23959	-119.18226
VE-101-0236	101	8202049342	Active	M	34.245133	-119.19605
VE-101-0237	101	8202049341	Active	L	34.24494	-119.19669
VE-101-0246	101	8202049340	Active	L	34.253683	-119.212317
VE-101-0247	101	8202049355	Active	L	34.253233	-119.2124
VE-101-0256	101	8202049354	Active	L	34.260867	-119.227417
VE-101-0257	101	8202049353	Active	L	34.260533	-119.227667
VE-101-0266	101	8202049352	Active	F	34.263817	-119.243917
VE-101-0267	101	8202049351	Active	F	34.263817	-119.243917
VE-101-0276	101	8202049350	Active	L	34.260433	-119.258117
VE-101-0277	101	8202049339	Active	L	34.260067	-119.258317
VE-101-0286	101	8202049338	Active	L	34.2694	-119.2723
VE-101-0287	101	8202049337	Active	A	34.269217	-119.27265
VE-101-0296	101	8202049332	Active	M	34.275833	-119.287933
VE-101-0297	101	8054431038	Active	L	34.275833	-119.287933
VE-101-0306	101	8054431405	Active	F	34.279117	-119.30585
VE-101-0307	101	8054276920	Active	L	34.278583	-119.3051
VE-101-0312	101	8054431031	Active	L	34.281283	-119.312783
VE-101-0313	101	8054431309	Active	L	34.2809	-119.312733
VE-101-0322	101	8054431228	Active	F	34.28465	-119.320567
VE-101-0323	101	8054431966	Active	F	34.2849	-119.322067
VE-101-0326	101	8054430579	Active	M	34.288	-119.328583
VE-101-0327	101	8054276779	Active	F	34.288167	-119.330167
VE-101-0332	101	8054432278	Active	A	34.29125	-119.336067
VE-101-0333	101	8054431511	Active	A	34.292483	-119.337967
VE-101-0336	101	8054430655	Active	A	34.297183	-119.34085
VE-101-0337	101	8054276805	Inactive	L	34.298433	-119.342417
VE-101-0342	101	8054431540	Active	A	34.305717	-119.347883
VE-101-0343	101	8054431701	Active	F	34.304617	-119.347417
VE-101-0346	101	8054276964	Active	M	34.308767	-119.3516
VE-101-0347	101	8054430347	Active	F	34.30965	-119.353717
VE-101-0352	101	8054432126	Active	L	34.313883	-119.359033
VE-101-0353	101	8054430872	Active	F	34.314767	-119.360817
VE-101-0356	101	8054430824	Active	L	34.318567	-119.365767
VE-101-0357	101	8054431669	Active	L	34.318983	-119.367333
VE-101-0362	101	8054431343	Active	A	34.321917	-119.372117
VE-101-0363	101	8054430242	Active	L	34.32205	-119.375367
VE-101-0366	101	8054430518	Active	L	34.3215	-119.382083
VE-101-0367	101	8054430595	Active	L	34.321067	-119.3822
VE-101-0372	101	8054434125	Active	A	34.32255	-119.390417
VE-101-0373	101	8054433603	Active	A	34.32235	-119.391033
VE-101-0376	101	8054434817	Active	A	34.328067	-119.396067
VE-101-0377	101	8054433637	Active	L	34.32895	-119.397567
VE-101-0382	101	8054434571	Active	A	34.334467	-119.402133
VE-101-0383	101	8054434607	Active	A	34.334767	-119.403333

SAFE-2025 SOW APPENDIX B

CALL BOX SIGN NO.	HWY	PHONE	STATUS	SITE TYPE	LATITUDE	LONGITUDE
VE-101-0386	101	8054432988	Active	L	34.339717	-119.40915
VE-101-0387	101	8054433585	Active	L	34.339567	-119.4098
VE-101-0392	101	8054433459	Active	L	34.344417	-119.419117
VE-101-0393	101	8054433502	Active	A	34.3434	-119.417833
VE-101-0396	101	8054433694	Active	L	34.348833	-119.423583
VE-101-0397	101	8054434455	Active	F	34.3481	-119.423667
VE-101-0402	101	8054433678	Active	M	34.3549	-119.429883
VE-101-0403	101	8054433789	Active	F	34.35405	-119.429283
VE-101-0403W	0	8054433544	Active	W	34.35405	-119.429283
VE-101-0406	101	8054433337	Active	M	34.356417	-119.437917
VE-101-0412	101	8054433948	Active	E	34.3591	-119.444717
VE-101-0413	101	8054433830	Active	L	34.358967	-119.444983
VE-101-0413W	0	8054433579	Active	W	34.358967	-119.444983
VE-101-0416	101	8054434675	Active	L	34.365667	-119.450767
VE-101-0417	101	8054433784	Active	A	34.364933	-119.4505
VE-101-0417W	0	8054433413	Active	W	34.364933	-119.4505
VE-101-0422	101	8054433849	Active	M	34.37105	-119.4556
VE-101-0423	101	8054432796	Active	A	34.371117	-119.456217
VE-101-0423W	0	8054432791	Active	W	34.371117	-119.456217
VE-101-0426	101	8054441092	Active	M	34.375283	-119.463783
VE-101-0427	101	8054437088	Active	A	34.374767	-119.462933
VE-101-0427W	0	8054436436	Active	W	34.374767	-119.462933
VE-101-0432	101	8054437370	Active	M	34.37615	-119.471433
VE-101-0433	101	8054437936	Active	A	34.37615	-119.471433
VE-101-0433W	0	8054437241	Active	W	34.37615	-119.471433
VE-118-0002	118	8054439878	Active	L	34.287433	-119.154667
VE-118-0003	118	8054440875	Active	L	34.2876	-119.1543
VE-118-0026	118	8054437562	Active	A	34.271383	-119.131683
VE-118-0032	118	8054440666	Active	A	34.266583	-119.1247
VE-118-0036	118	8054436992	Active	A	34.26225	-119.118267
VE-118-0042	118	8054442442	Active	A	34.257467	-119.111367
VE-118-0052	118	8054436899	Active	F	34.263583	-119.0948
VE-118-0058	118	8054437049	Active	M	34.263633	-119.081267
VE-118-0066	118	8054436895	Active	A	34.263667	-119.070267
VE-118-0068	118	8054439610	Active	M	34.26365	-119.063167
VE-118-0084	118	8054436892	Active	M	34.263683	-119.039367
VE-118-0096	118	8054436520	Active	A	34.263683	-119.019033
VE-118-0106	118	8054437238	Active	A	34.263683	-119.00145
VE-118-0116	118	8054437026	Active	A	34.264367	-118.984317
VE-118-0126	118	8202048379	Active	F	34.267033	-118.966983
VE-118-0133	118	8054436376	Active	L	34.268633	-118.957567
VE-118-0144	118	8054439622	Active		34.273433	-118.931717
VE-118-0147	118	8054436982	Active	M	34.273433	-118.931717
VE-118-0153	118	8054436690	Active	A	34.27605	-118.926317
VE-118-0186	118	8054692463	Active	F	34.284767	-118.863917
VE-118-0187	118	8054690871	Active	L	34.283383	-118.863933
VE-118-0192	118	8054692571	Active	L	34.290483	-118.862433
VE-118-0193	118	8054691879	Active	F	34.290867	-118.86345
VE-118-0196	118	8054448413	Active	F	34.292833	-118.852683
VE-118-0197	118	8054448440	Active	L	34.293267	-118.85215
VE-118-0202	118	8054449330	Active	L	34.293183	-118.844017
VE-118-0203	118	8054692050	Active	L	34.293533	-118.843517
VE-118-0206	118	8054445676	Active	L	34.292883	-118.835567
VE-118-0207	118	8054695415	Active	A	34.293483	-118.836517

SAFE-2025 SOW APPENDIX B

CALL BOX SIGN NO.	HWY	PHONE	STATUS	SITE TYPE	LATITUDE	LONGITUDE
VE-118-0212	118	8054447408	Active	L	34.291883	-118.828567
VE-118-0213	118	8054695736	Active	L	34.292333	-118.828533
VE-118-0216	118	8054693008	Active	F	34.291267	-118.819983
VE-118-0217	118	8054446385	Active	F	34.291817	-118.82005
VE-118-0222	118	8054690941	Inactive	F	34.290733	-118.811067
VE-118-0223	118	8054447031	Active	L	34.2912	-118.81095
VE-118-0226	118	8054690689	Active	L	34.288667	-118.802767
VE-118-0227	118	8054695070	Active	L	34.28915	-118.802633
VE-118-0236	118	8054692352	Active	F	34.282133	-118.787033
VE-118-0237	118	8054694169	Active	L	34.28265	-118.787067
VE-118-0246	118	8054444633	Active	L	34.282067	-118.769333
VE-118-0247	118	8054690558	Active	F	34.282517	-118.769183
VE-118-0256	118	80544448197	Active	L	34.282067	-118.75175
VE-118-0257	118	8054444218	Active	M	34.28251	-118.75169
VE-118-0266	118	80544446285	Active	L	34.28205	-118.734333
VE-118-0267	118	8202045839	Active	L	34.282483	-118.7255
VE-118-0272	118	8202045838	Active	F	34.282067	-118.72545
VE-118-0273	118	8202045837	Active	F	34.2819	-118.716583
VE-118-0282	118	8202045836	Active	D	34.28148	-118.70986
VE-118-0283	118	8202045835	Active	L	34.281867	-118.70795
VE-118-0286	118	8202045834	Active	D	34.28145	-118.70134
VE-118-0287	118	8202045833	Active	F	34.28185	-118.698817
VE-118-0296	118	8202045832	Active	L	34.2814	-118.68115
VE-118-0297	118	8202045831	Active	L	34.2818	-118.681183
VE-118-0306	118	8202045830	Active	L	34.279	-118.663767
VE-118-0307	118	8202045818	Active	L	34.279517	-118.664433
VE-118-0312	118	8202045817	Active	F	34.275033	-118.6574
VE-118-0313	118	8202045816	Active	F	34.274983	-118.6567
VE-118-0316	118	8202045815	Active	L	34.270283	-118.651667
VE-118-0317	118	8202045829	Active	L	34.270733	-118.651667
VE-118-0322	118	8202045828	Active	L	34.267367	-118.644083
VE-118-0323	118	8202045827	Active	F	34.267967	-118.644083
VE-118-0326	118	8202045826	Active	L	34.268	-118.635133
VE-118-0327	118	8202045825	Active	L	34.268233	-118.6356
VE-126-0012	126	8202997919	Active	L	34.269867	-119.2229
VE-126-0013	126	8202997918	Active	F	34.270233	-119.2231
VE-126-0022	126	8202997917	Active	L	34.272283	-119.2056
VE-126-0023	126	8202997916	Active	M	34.272717	-119.2057
VE-126-0032	126	8202997915	Active	L	34.274633	-119.189733
VE-126-0033	126	8202997914	Active	M	34.275233	-119.188333
VE-126-0042	126	8202997913	Active	M	34.2801	-119.171533
VE-126-0043	126	8202997912	Active	M	34.2804	-119.171867
VE-126-0052	126	8202997911	Active	L	34.28855	-119.15745
VE-126-0053	126	8202997910	Active	L	34.288767	-119.157767
VE-126-0062	126	8202997899	Active	L	34.297417	-119.142533
VE-126-0063	126	8202997898	Active	L	34.3005	-119.137267
VE-126-0072	126	8202997897	Active	L	34.305283	-119.129383
VE-126-0073	126	8202997896	Active	M	34.305667	-119.129717
VE-126-0082	126	8202997921	Active	F	34.312567	-119.11715
VE-126-0083	126	8202997920	Active	L	34.31295	-119.117483
VE-126-0092	126	8202997909	Active	L	34.32305	-119.099783
VE-126-0093	126	8202997908	Active	L	34.323017	-119.100617
VE-126-0102	126	8202997907	Active	L	34.332983	-119.08785
VE-126-0103	126	8202997906	Active	L	34.333317	-119.0882

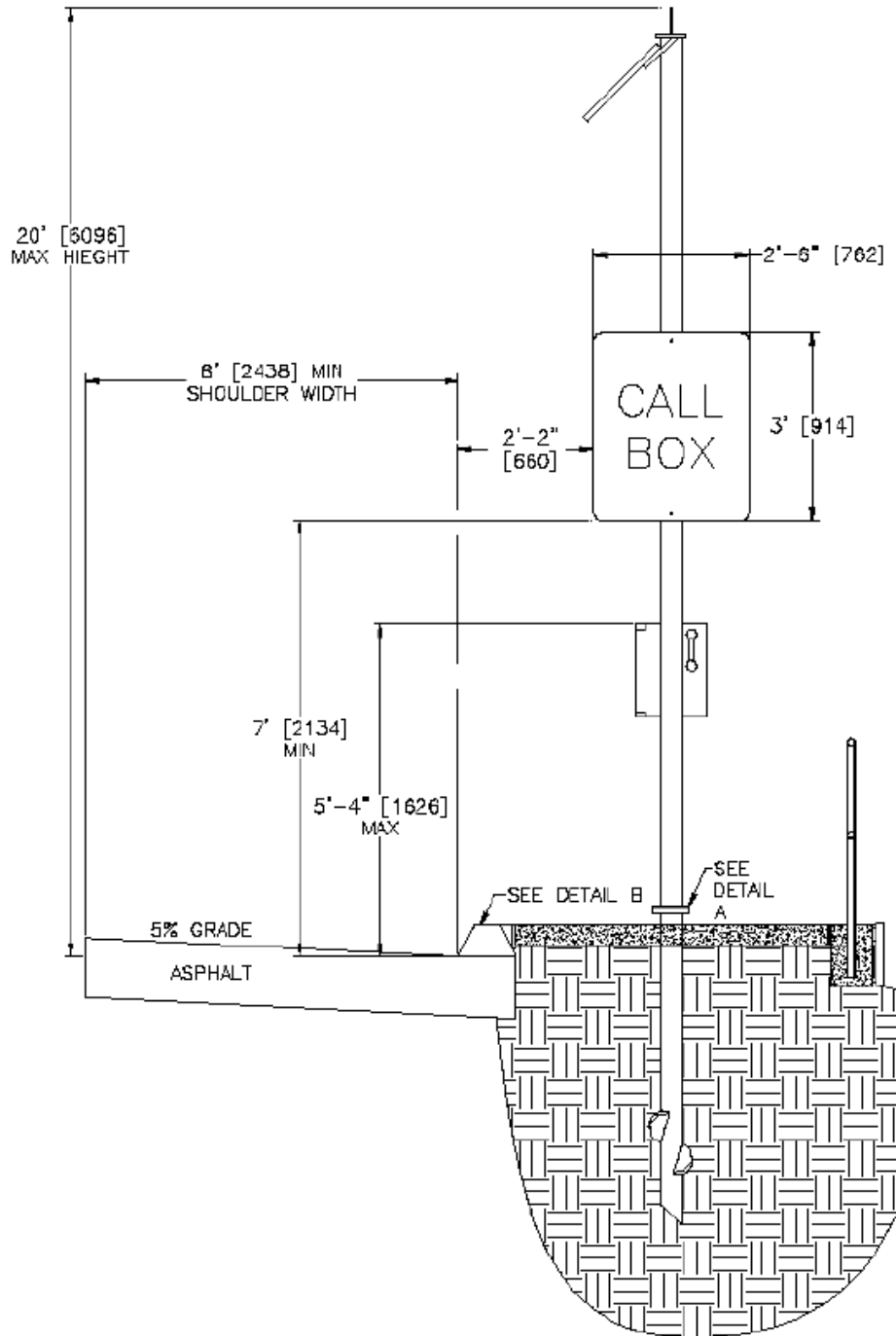
SAFE-2025 SOW APPENDIX B

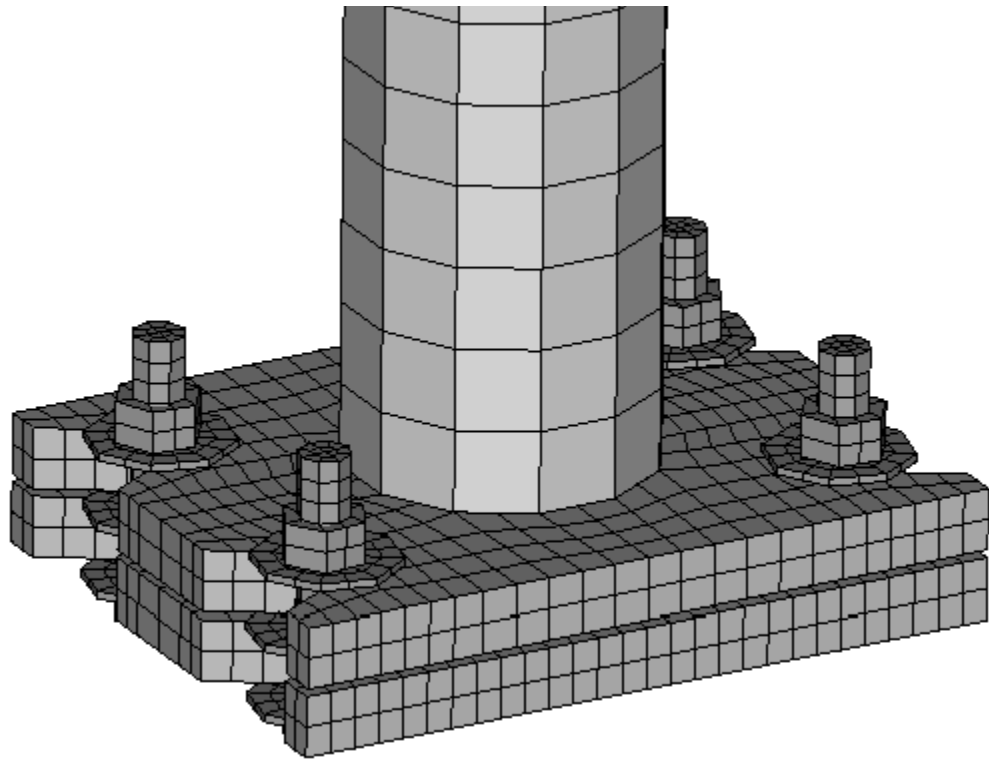
CALL BOX SIGN NO.	HWY	PHONE	STATUS	SITE TYPE	LATITUDE	LONGITUDE
VE-126-0112	126	8202997905	Active	L	34.34235	-119.07445
VE-126-0113	126	8202997904	Active	L	34.34235	-119.07445
VE-126-0122	126	8202997903	Active	L	34.349783	-119.058867
VE-126-0123	126	8202997902	Active	L	34.350167	-119.059067
VE-126-0132	126	8202997901	Active	L	34.357483	-119.044383
VE-126-0133	126	8202997938	Active	L	34.3632	-119.039683
VE-126-0136	126	8202997937	Active	F	34.362933	-119.039433
VE-126-0137	126	8202997936	Active	F	34.362933	-119.039433
VE-126-0142	126	8202997935	Active	A	34.366217	-119.0321
VE-126-0143	126	8202997934	Active	F	34.36645	-119.032267
VE-126-0146	126	8202997932	Active	A	34.3685	-119.02455
VE-126-0147	126	8202997931	Active	M	34.368783	-119.024683
VE-126-0152	126	8202997930	Active	M	34.372033	-119.016967
VE-126-0153	126	8202997948	Active	M	34.372267	-119.017217
VE-126-0156	126	8202997947	Active	L	34.3744	-119.00895
VE-126-0157	126	8202997946	Active	A	34.374717	-119.009083
VE-126-0162	126	8202997945	Active	F	34.376117	-119.001
VE-126-0163	126	8202997944	Active	M	34.3765	-119.001183
VE-126-0166	126	8202997943	Active	L	34.378083	-118.992683
VE-126-0167	126	8202997942	Active	M	34.3784	-118.992833
VE-126-0172	126	8202997941	Active	L	34.379917	-118.983483
VE-126-0173	126	8202997940	Active	F	34.380283	-118.983583
VE-126-0176	126	8202997929	Active	L	34.381533	-118.974817
VE-126-0177	126	8202997928	Active	A	34.38195	-118.97495
VE-126-0178	126	8202997927	Active	L	34.383067	-118.9673
VE-126-0179	126	8202997926	Active	L	34.383467	-118.9675
VE-126-0186	126	8202997925	Active	F	34.38775	-118.959317
VE-126-0187	126	8202997924	Active	L	34.38805	-118.959533
VE-126-0192	126	8202997939	Active	L	34.3929	-118.954517
VE-126-0193	126	8202997933	Active	A	34.3932	-118.954817
VE-126-0196	126	8202997969	Active	M	34.393417	-118.945817
VE-126-0197	126	8202997968	Active	M	34.393783	-118.94585
VE-126-0226	126	8202997967	Active	A	34.393783	-118.94585
VE-126-0227	126	8202997966	Active	A	34.397783	-118.8923
VE-126-0232	126	8202997965	Active	L	34.3959	-118.886667
VE-126-0233	126	8202997964	Active	A	34.3963	-118.886733
VE-126-0236	126	8202997963	Active	L	34.395383	-118.876917
VE-126-0237	126	8202997962	Active	A	34.395683	-118.876933
VE-126-0242	126	8202997961	Active	L	34.395633	-118.868467
VE-126-0243	126	8202997975	Active	A	34.396	-118.868133
VE-126-0246	126	8202997974	Active	L	34.396867	-118.857417
VE-126-0247	126	8202997973	Active	A	34.397083	-118.857467
VE-126-0252	126	8202997972	Active	A	34.3974	-118.848833
VE-126-0253	126	8202997971	Active	L	34.397617	-118.848883
VE-126-0256	126	8202997970	Active	A	34.3989	-118.8426
VE-126-0257	126	8202997959	Active	A	34.3992	-118.842783
VE-126-0262	126	8202997958	Active	A	34.400733	-118.83385
VE-126-0263	126	8202997957	Active	A	34.401033	-118.833833
VE-126-0266	126	8202997956	Active	F	34.4007	-118.827233
VE-126-0267	126	8202997955	Active	M	34.400983	-118.82705
VE-126-0272	126	8202997954	Active	A	34.4006	-118.815833
VE-126-0273	126	8202997953	Active	A	34.40085	-118.81575
VE-126-0276	126	8202997952	Active	L	34.400683	-118.808217
VE-126-0277	126	8202997951	Active	M	34.400917	-118.808317

SAFE-2025 SOW APPENDIX B

CALL BOX SIGN NO.	HWY	PHONE	STATUS	SITE TYPE	LATITUDE	LONGITUDE
VE-126-0282	126	8202997960	Active	F	34.403167	-118.79815
VE-126-0283	126	8202997982	Active	F	34.403383	-118.798267
VE-126-0286	126	8202997981	Active	L	34.406883	-118.791117
VE-126-0287	126	8202997980	Active	A	34.407083	-118.79135
VE-126-0292	126	8202998003	Active	L	34.410633	-118.784117
VE-126-0293	126	8202998002	Active	F	34.410933	-118.78425
VE-126-0296	126	8202998001	Active	M	34.40831	-118.776
VE-126-0297	126	8202997999	Active	F	34.408333	-118.775917
VE-126-0302	126	8202997998	Active	A	34.407267	-118.7682
VE-126-0303	126	8202997997	Active	A	34.407617	-118.769683
VE-126-0306	126	8202997996	Active	F	34.406583	-118.7575
VE-126-0307	126	8202997995	Active	A	34.40695	-118.7575
VE-126-0312	126	8202997994	Active	M	34.406017	-118.7514
VE-126-0313	126	8202997993	Active	M	34.406317	-118.7514
VE-126-0316	126	8202997992	Active	F	34.405483	-118.744
VE-126-0317	126	8202997991	Active	F	34.40575	-118.744083
VE-126-0322	126	8202997990	Active	A	34.408183	-118.735017
VE-126-0323	126	8202997979	Active	A	34.40845	-118.7352
VE-126-0326	126	8202997978	Active	M	34.40995	-118.726433
VE-126-0327	126	8202997989	Active	A	34.410167	-118.726333
VE-126-0332	126	8202997988	Active	F	34.404633	-118.71785
VE-126-0333	126	8202997987	Active	A	34.405217	-118.718583
VE-126-0336	126	8202997986	Active	L	34.40265	-118.71055
VE-126-0337	126	8202997985	Active	F	34.402983	-118.710583
VE-126-0342	126	8202997984	Active	L	34.40495	-118.701817
VE-126-0343	126	8202997983	Active	A	34.4049	-118.702633
VE-150-0002	150	8202045947	Active	A	34.39585	-119.453217
VE-150-0007	150	8202045946	Active	M	34.39335	-119.43845
VE-150-0018	150	8202045945	Active	A	34.392267	-119.421983
VE-150-0026	150	8202045944	Active	A	34.387683	-119.414083
VE-150-0042	150	8202045943	Active	A	34.384233	-119.392983
VE-150-0058	150	8202045942	Active	M	34.387133	-119.37385
VE-150-0083	150	8202045941	Active		34.393267	-119.353967
VE-150-0097	150	8202045940	Active	A	34.41565	-119.359567
VE-150-0108	150	8202045929	Active	A	34.41945	-119.342667
VE-150-0119	150	8202045928	Active	A	34.422917	-119.3285
VE-150-0131	150	8202045927	Active	A	34.4253	-119.311367
VE-150-0141	150	8202045926	Active	L	34.42795	-119.2955
VE-150-0192	150	8202045925	Active	A	34.44745	-119.21575
VE-150-0212	150	8202045924	Active	L	34.439867	-119.202267
VE-150-0221	150	8202045939	Active	A	34.433633	-119.196083
VE-150-0232	150	8202045938	Active	M	34.43545	-119.178183
VE-150-0241	150	8202045937	Active	M	34.436433	-119.162217
VE-150-0249	150	8202045936	Active	A	34.437767	-119.147667
VE-150-0267	150	8202045935	Active	M	34.428883	-119.11875
VE-150-0283	150	8202045933	Active	A	34.4269	-119.100133
VE-150-0293	150	8202045958	Active	A	34.4197	-119.085417
VE-150-0302	150	8202045959	Active	M	34.40805	-119.083733
VE-150-0312	150	8202047050	Active	M	34.39395	-119.075967

APPENDIX C – Call Box Drawings







APPENDIX D – Site Types



Site Type A – installed at-grade, in soil.



Site Type B – installed in a cut-slope.



Site Type C – installed on an in-fill slope.



Site Type D – mounted on a soundwall.



Site Type F – installed behind a guard rail.



Site Type G – installed at-grade, in concrete.



Site Type H or K – installed on a k-rail or concrete barrier.



Site Type L – installed behind a curb.



Site Type M – same as a Site Type F, except no guard rail.



Bagged Call Box

APPENDIX E – Call Box Removal Log

The Contractor shall develop and maintain a Call Box Removal Log. Sample is shown below:

Call box #	AREA	Location description	Call box status	GEO Pos.	Call box site type	Notes (date removed, & any other items of note)
SB-015-0542	Barstow	N/B 1 M S/O'F WILD WASH	ACTIVE	(34 67488333,-117 2106833)	L	
SB-015-0543	Barstow	S/B 1 M S/O'F WILD WASH RD	ACTIVE	(34 67463333,-117 21115)	M	
SB-015-0562	Barstow	N/B 1 M N/O'F WILD WASH	ACTIVE	(34 702543,-117 204575)	M	
SB-015-0563	Barstow	S/B 1 M N/O'F WILD WASH	ACTIVE	(34 702828,-117 204997)	M	
SB-015-0582	Barstow	N/B 2 M S/O'F HODGE RD	ACTIVE	(34 727895,-117 189156)	M	
SB-015-0583	Barstow	S/B 2 M S/O'F HODGE RD	ACTIVE	(34 728212,-117 189584)	M	
SB-015-0602	Barstow	N/B @ HODGE RD	ACTIVE	(34 7513,-117 16785)	M	
SB-015-0603	Barstow	S/B @ HODGE RD	ACTIVE	(34 75178333,-117 1680667)	M	
SB-015-0622	Barstow	N/B 2 M N/O'F HODGE RD	ACTIVE	(34 77208333,-117 1427333)	M	
SB-015-0623	Barstow	S/B 2 M N/O'F HODGE RD	ACTIVE	(34 77241667,-117 1431)	L	
SB-015-0642	Barstow	N/B 1.5 M S/O'F SIDEWINDER	ACTIVE	(34 79176667,-117 1183833)	M	
SB-015-0643	Barstow	S/B 1.5 M S/O'F SIDEWINDER	ACTIVE	(34 79213333,-117 1186833)	M	
SB-015-0652	Barstow	N/B S/O'F SIDEWINDER RD	ACTIVE	(34 8020938,-117 1055567)	M	
SB-015-0653	Barstow	S/B S/O'F SIDEWINDER RD	ACTIVE	(34 802406,-117 10597)	M	
SB-015-0672	Barstow	N/B N/O'F SIDEWINDER RD	ACTIVE	(34 82813333,-117 0920167)	M	
SB-015-0673	Barstow	S/B N/O'F SIDEWINDER RD	ACTIVE	(34 8282833,-117 0925167)	M	
SB-015-0688	Barstow	N/B @ LENWOOD RD	ACTIVE	(34 85485,-117 0850167)	M	
SB-015-0689	Barstow	S/B @ LENWOOD RD	ACTIVE	(34 85495,-117 08435)	M	
SB-015-0708	Barstow	N/B S/O'F "L" STREET	ACTIVE	(34 879805,-117 065836)	L	
SB-015-0709	Barstow	S/B S/O'F "L" STREET	ACTIVE	(34 880214,-117 066167)	L	
SB-015-0728	Barstow	N/B N/O'F "L" STREET	ACTIVE	(34 885852,-117 033375)	L	
SB-015-0729	Barstow	S/B N/O'F "L" STREET	ACTIVE	(34 886311,-117 033352)	D	
SB-015-0752	Barstow	N/B .5 M N/O'F E MAIN ST	ACTIVE	(34 89355,-116 997843)	L	
SB-015-0753	Barstow	S/B .5 M N/O'F E MAIN ST	ACTIVE	(34 893966,-116 997909)	L	