



Sespe Creek Overflow Railroad Bridge Repair Invitation for Bids IFB No. SPBL-2025-01

April 16, 2025

Pre-Bid Conference



Reminder

- Please be reminded that any exchange between the Ventura County Transportation Commission and prospective bidders at this Pre-Bid Conference will be considered unverified information and does not qualify nor change the solicitation documents.
- Solicitation documents can only be amended by written addendum issued by the Contract Administrator.
- All Questions asked and answered will be non-binding. Please officially submit all Q and A via email to spbl@goventura.org



Agenda

- *Please . . .*
 - Quiet cell phones
 - Enter your information on the sign-in sheet when you arrive
- Introductions
- Purpose (Scope of Work)
- Review of:
 - Contract Documents/Bidder Questions/Bid Opening
 - Bid Submittal Requirements
 - Common Bidder Errors
 - Job Walk





Project Team

Ventura County Transportation Commission (VCTC)

Amanda Fagan, Director of Planning & Sustainability

Caitlin Brooks, Program Manager – Transportation Planning

Andrew "Drew" Kent – Program Manager – Transportation Data & Services

Martin Erickson, Executive Director

Sierra Northern Railway (Lessee & Operator)

Matt Blackburn, General Manager – Ventura Division

Cole Pennington, Chief Engineer

RailPros

Design Team

Julina Corona, PE – Project Manager

Janet Yeung, Deputy Project Manager

Construction Management Team

Dan Thompson, Construction Manager

Kyle Krzemien, Construction Manager

Stephen Ng, Construction Manager





Background



So.Cal. Region - Santa Paula Branch Line Railroad



Legend

- California Rail Network
- County Line
- Santa Paula Branch Line ROW



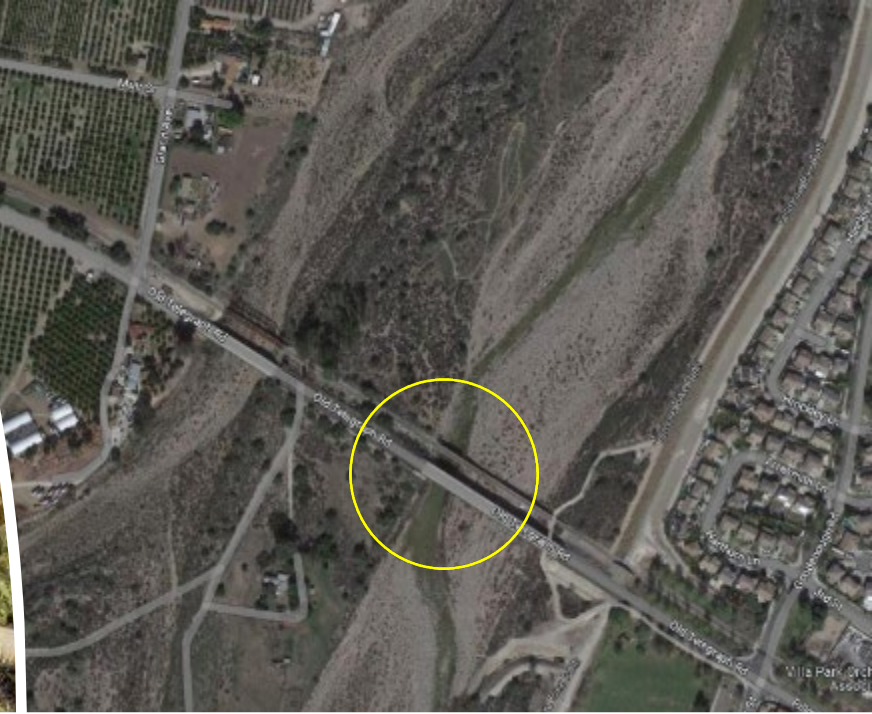
SPBL Background

- **1995:** VCTC purchased SPBL and Ventura Branch Line from Southern Pacific
- **2001:** VCTC executed 20-year operating lease with Fillmore & Western Railway (FWRY) for the operational ROW only (15' of centerline)
- **2001 – 2021:** FWRY operated railroad, including tourist excursion trains and movie production
- **December 2021:** Commission approved new Railroad Lease and Operations Agreement between VCTC and **Sierra Northern Railway**
- Since January 2022, Sierra Northern operates and maintains the Branch Line and provides freight, transload, rail car storage, and television/film service
- Tourist & excursion service provided through sister company Mendocino Railway



Sespe Creek Overflow Railroad Bridge

- One of 37 bridge structures on SPBL
- Located at Mile Post 423.44
- West of Fillmore and adjacent to Old Telegraph Road Bridge
- Constructed in 1969
- Total Length: 450 feet
- Vertical Clearance: 14 feet
- 15 Spans x 29 feet 10 inches each



423.44 Looking East



January 2023 Storm Damage

- Series of atmospheric river storms during December 2022 and January 2023
- On January 10, 2023, flood and debris flows washed out 3 spans (approx. 90 feet) of railroad bridge at western end of bridge
- Bridge closed to rail traffic
- Need for reconstruction to restore rail service and reconnect rail line
- State Emergency Declaration: 1/4/2023
- Federal Disaster Declaration: 1/14/2024 (DR-4683)





February 2024 Storm Damage



Sespe Creek Overflow & Old Telegraph Road
February 5, 2024



Photo Credit:
Matt Blackburn, Sierra Northern Railway



Disconnected Rail Line

- Rail line out of service at the Sespe Creek Overflow railroad bridge
- Eastern 1/3 of branch line disconnected from main line
- Assets on disconnected portion of line
 - City of Fillmore & Piru community
 - Fillmore Rail Yard and Turntable
 - Movie tunnel
 - Traditional home of tv & film production and tourist & excursion service
 - Parallel Systems autonomous battery-electric rail system test site
 - Planned future transload and maintenance facility for Sierra Northern Railway
 - Freight rail customers
 - Rail Car Storage area





Emergency Repairs: Embankment & Approach

- Protective measures to prevent further erosion of embankment and railroad tracks during rainy season.
- Stabilize embankment in preparation for bridge reconstruction and to prevent further loss of property.

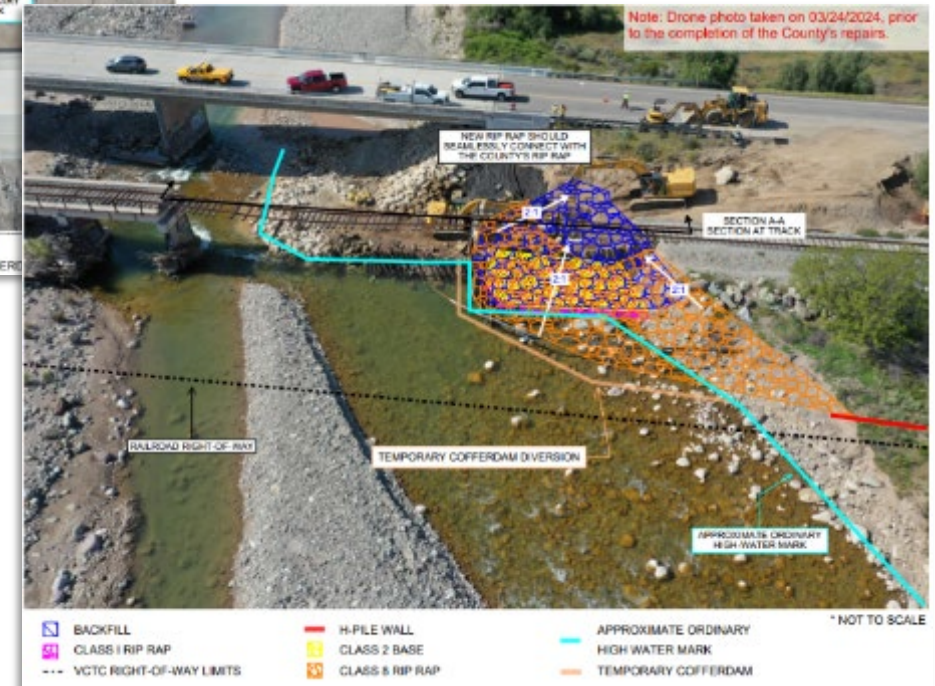
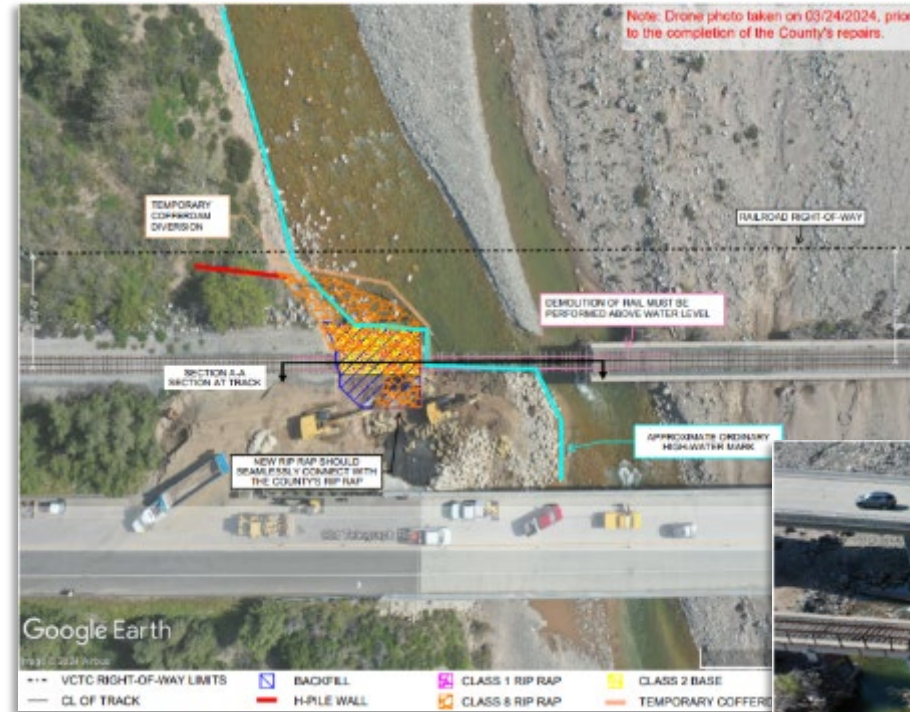


Figure 3. Sespe Creek channel migration at project site between 2022 and 2024 (post-flood)



Emergency Repairs: Bank Stabilization

- USACE issued RGP-63 permit on 8/28/2024.
- VCTC released IFB for construction services in August 2024.
- Contract awarded to Summer Construction in September 2024.
- Work completed by October 27, 2024.





Sespe Creek Overflow Railroad Bridge Emergency Repairs: Bank Stabilization



Before: Post-Storm – 02/07/2024



After: Completion of Emergency Repairs – 10/24/2024

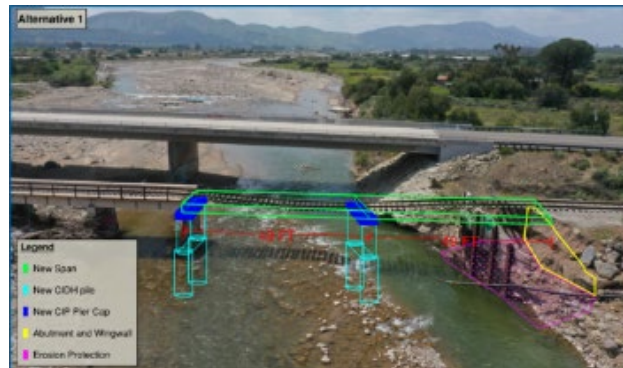
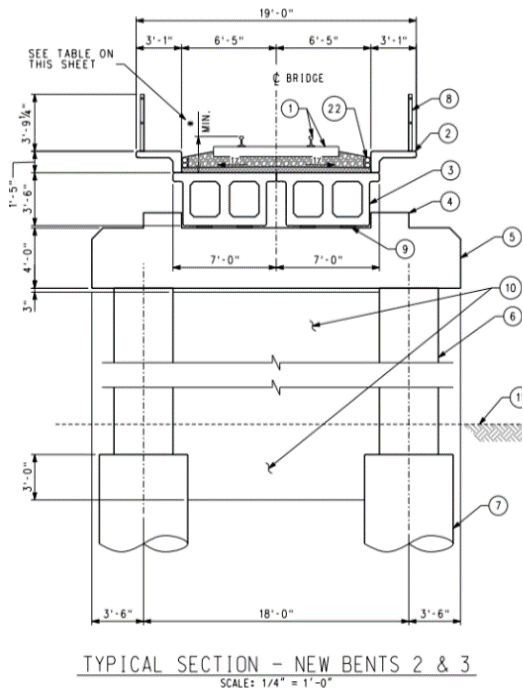
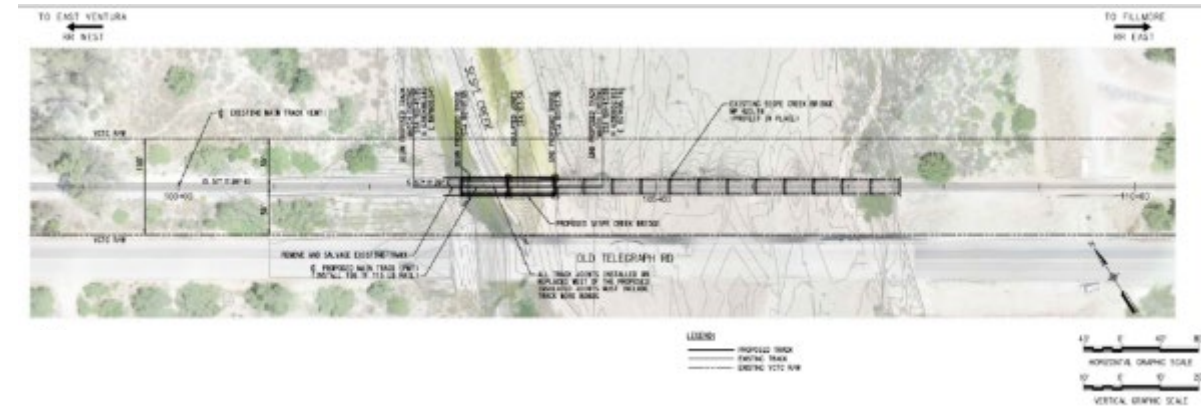
[Sespe Creek Overflow Bridge on Vimeo](#)



Permanent Repairs & Design Package



Permanent Repairs: Scope of Work

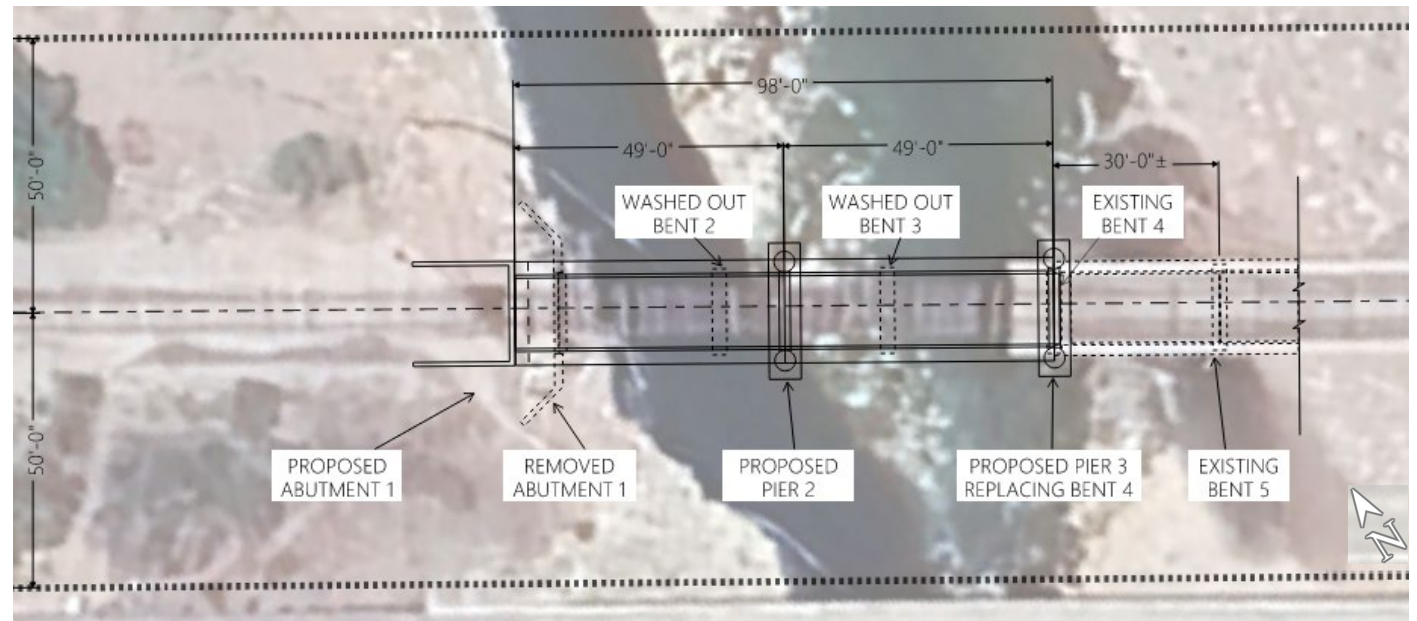


- Installation of a bridge segment (superstructure, substructure, bridge deck) where the washout occurred.
- Bridge deck is ballasted with timber ties and jointed rail.
- The design includes two new bents, pier caps, and two 49-foot spans with a new abutment.
- Scope of Work Attachments:
 - Hydrology & Hydraulics
 - Geotechnical Report
 - Cultural Resources Study
 - Biological Resources Analysis
 - Survey
- Meets SCRRRA Standards and Specifications



Permanent Repairs: Design Package

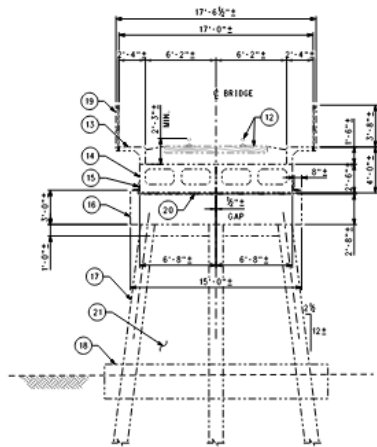
- Existing vs Proposed



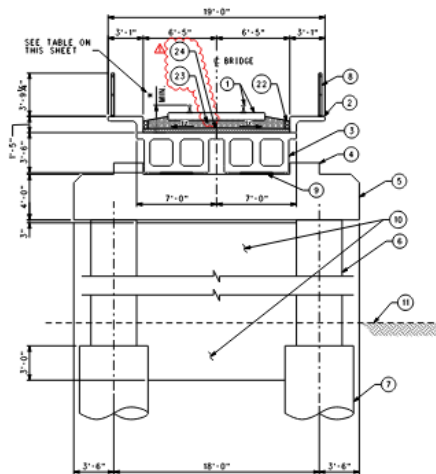


Permanent Repairs: Design Package

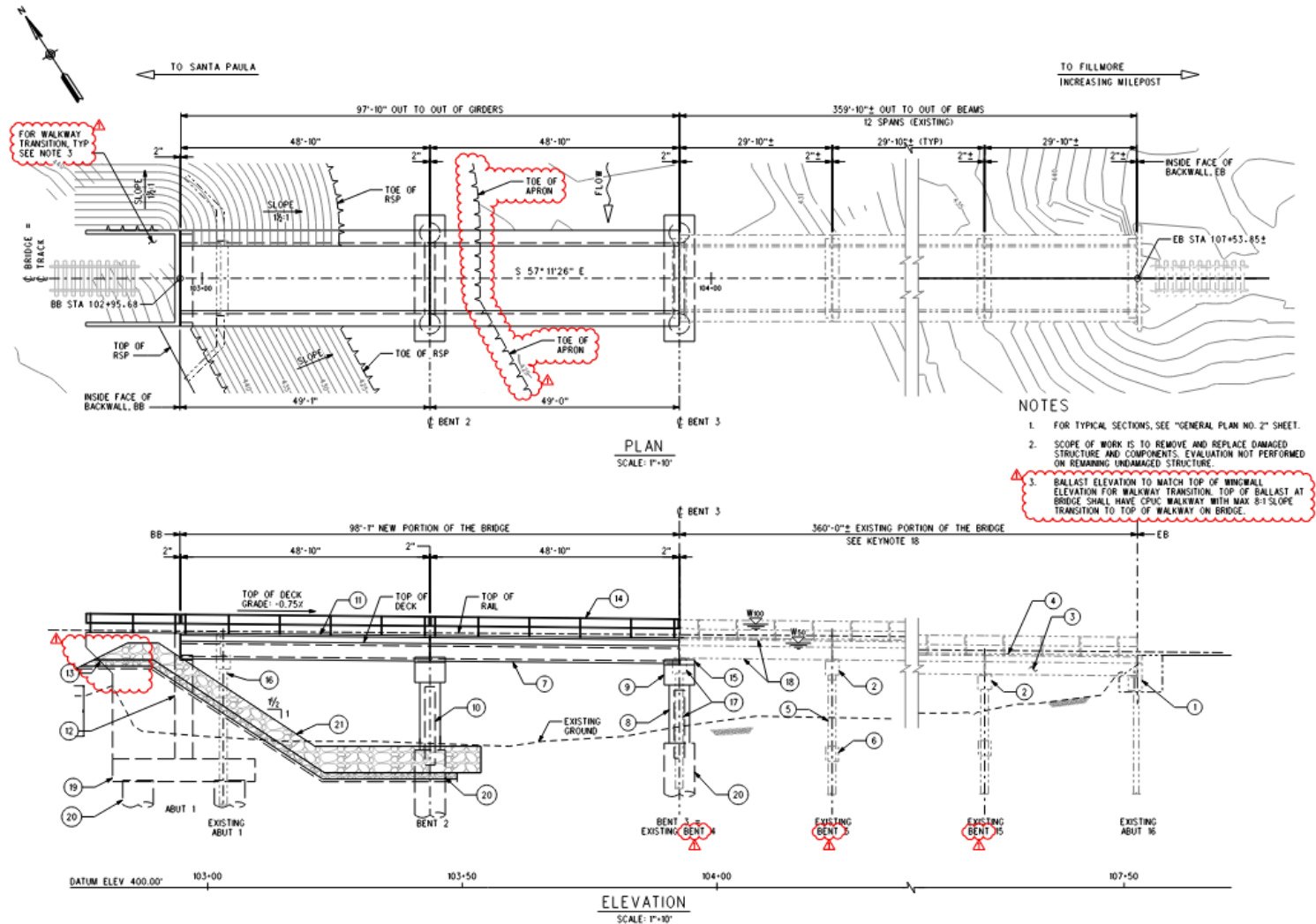
- Existing vs Proposed
- Proposed girders are longer than typical.
- Proposed foundation: CIDH piles



TYPICAL SECTION - EXISTING BENTS
SCALE: 3/4" = 1'-0"



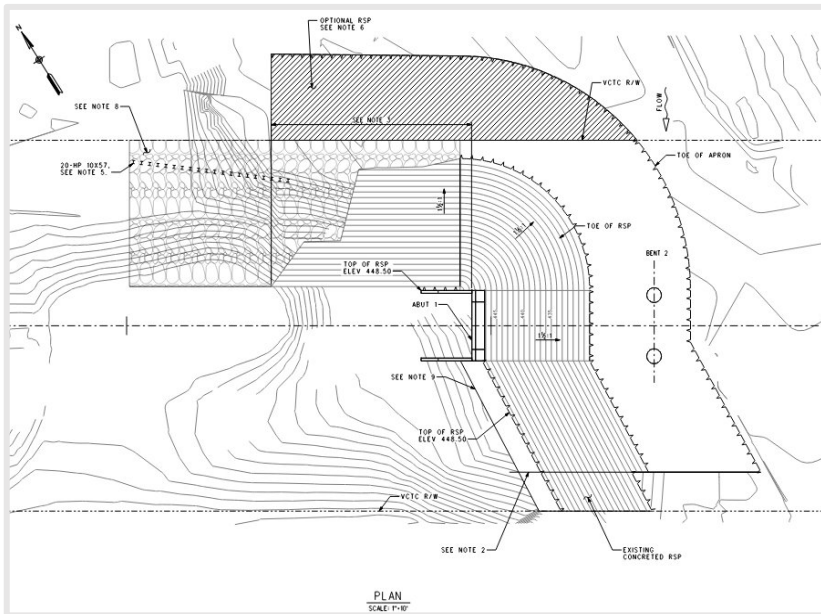
TYPICAL SECTION - NEW BENTS 2 & 3
SCALE: 3/4" = 1'-0"





Permanent Repairs: Design Package

- Rock Slope Protection
- H-pile wall to be protected in place
- Construction access





Permanent Repairs: Design Package

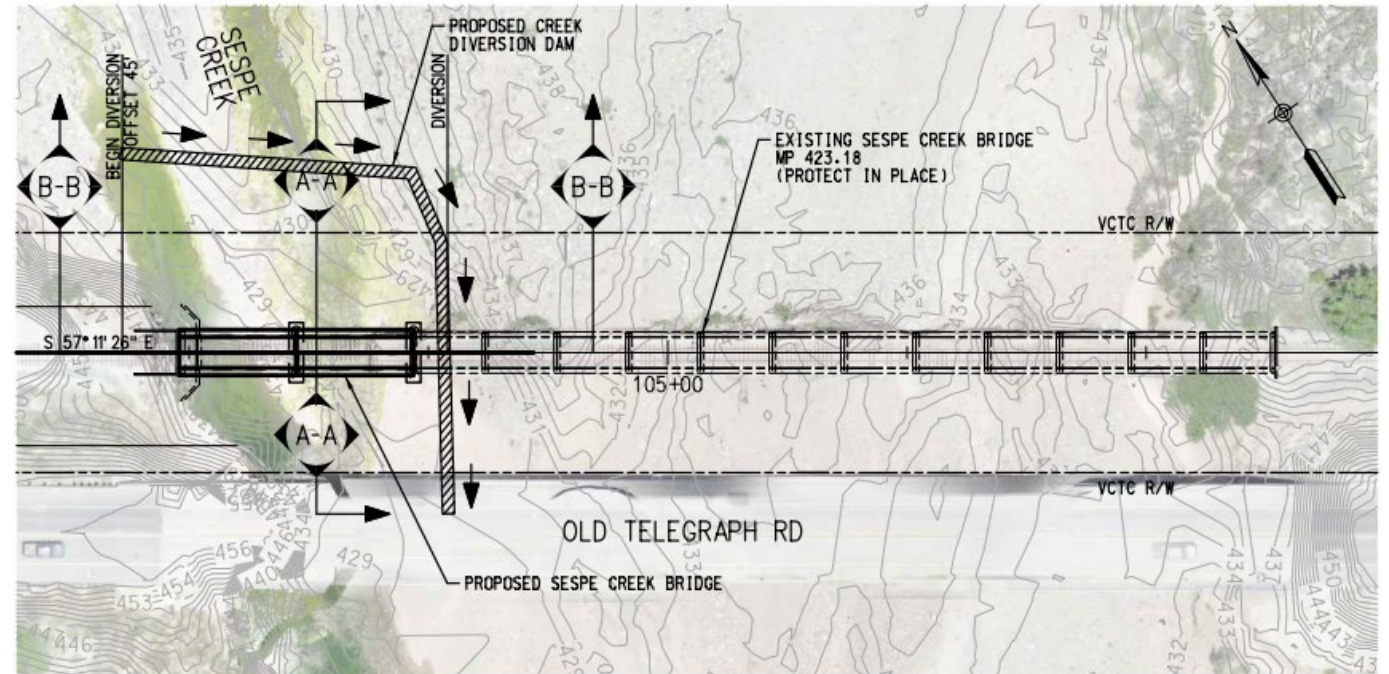
- Earthwork and Grading.
- No potential utility conflicts have been identified, but Contractor is still required to call DigAlert.





Permanent Repairs: Water Diversion Plan

- Contractor is responsible for meeting all BMP and regulatory requirements as contained within the Contract Documents.
- Contractor is responsible for conceiving and implementing diversion plan based on requirements contained within the BMP list and Specifications in the contract documents.





Environmental Review & Permitting

- CEQA Notice of Exemption (NOE) filed Aug. 24, 2023
 - 35-day Statute of Limitations expired Sept. 28, 2023 (DR-4683)
- Updated NOE re-filed on May 6, 2024 with updated Disaster Declaration Information (DR-4769)
 - 35-days Statute of Limitations expired June 10, 2024
- Emergency Repairs to Embankment under USACE RGP-63
 - RGP-63 issued by USACE on 8/28/2024
- Stormwater Pollution Protection Rainfall Erosivity Waiver & BMPs
- No Watershed Protection District Permit required
- Clean Water Act (CWA) Section 404 Permit
- Clean Water Act (CWA) Section 401 Permit
- NHPA Section 106 Compliance memo
- Endangered Species Act (ESA) Section 7 Consultation by USACE with USFWS required for Permanent Bridge Reconstruction (USACE National Permits #3 & #45) with updated Field Study and Biological Opinion to incorporate new damage



Invitation for Bids



Permanent Repairs: Procurement Timeline



Regulatory Permit
Applications submitted to
USACE, CDFW, and
RWQCB in late February
/ early March



Commission approved
release of IFB on 4/4 &
IFB posted on 4/7



Pre-Bid Conference and
On-Site Job Walk 4/16



Questions & Requests
for Approved Equals Due
4/30



Bids Due 5/16 NLT 3pm
PST



Commission
consideration of
contract award on 6/6



Target Date for Notice to
Proceed 6/10

	IFB Timeline
Date	Action
4-Apr-25	Commission Consideration of Approval to Release IFB
7-Apr-25	IFB Release Date
16-Apr-25	Pre-Bid Conference & On-Site Job Walk
30-Apr-25	Questions & Requests for Clarification or Approved Equals
16-May-25	Bid Due Date NLT 3pm PST
30-May-25	Agenda Publication Date
6-Jun-25	Commission Consideration of Contract Award
10-Jun-25	Notice to Proceed Target Date



Permanent Repairs Cost Estimate

- Based on geotechnical and hydrological evaluation of post-disaster site conditions, results of design process, and market conditions, the construction cost is estimated at **\$7.5M**.



Contract Requirements

- License Requirements at Time of Bid:
 - Class "A" license
 - Joint Venture bidders must obtain a Joint Venture License.
- Insurance Requirements
 - Workers' Compensation
 - Commercial General and Automobile Liability Insurance
 - Professional Liability Insurance
- Acceptability of Insurance
 - Insurers to have a Bests' rating of no less than A:VII.



Bid Information

- Can all be obtained through the VCTC website:
www.goventura.org/work-with-vctc/contracts
 - Invitation for Bids (IFB) with Contract Template and Exhibits
 - Plans and Specifications
 - Attachments A-I
 - Bid Forms
 - Price File
 - List of Proposed Subcontractors and Suppliers form
 - Bidders List form
- Bids will be **open** on **Monday, May 19, 2025, at 11:00 a.m.**
- Ventura County Transportation Commission, 751 E. Daily Dr., Suite 420, Camarillo, CA 93010 by the VCTC project manager.



Bid Submittal Instructions

- **Only hard copy** bid responses are accepted.
- Bids may be hand delivered or mailed (FedEx, UPS, US Mail, etc.) to VCTC:
Ventura County Transportation Commission
Attn: Amanda Fagan
751 E. Daily Dr., Ste 420
Camarillo, CA 93010
- Bid Forms and supporting documents must be submitted to VCTC **before** the deadline of **Friday, May 16, 2025 by 3:00 PM PST.**
- Bids received after the submission deadline will not be accepted.
- Once the Bid submittal process is complete, Bidders will receive confirmation via email.
- If you do not receive a confirmation, your Bid has **not** been submitted.
- Allow adequate time for the Bid submittal process to ensure receipt of the complete Bid prior to the closing date and time.
- Incomplete Bids will be deemed non-responsive.



Bid Submittal Instructions (Continued)

Complete Bid Package Requirements:

- Bid Letter
- Price File
- Responsible Bidder's Questionnaire
- General Certifications
- Campaign Contribution Certification
- Hiring and Lobbyist Restrictions Certifications
- Certification Regarding Lobbying by Contractor
- Disclosure of Lobbying by Contractor
- Certification of Bidder Regarding Debarment, Suspension, and Other Ineligibility and Other Responsibility Matters
- Cargo Preference Certificate



Bid Submittal Instructions (Continued)

Complete Bid Package Requirements (Cont.):

- List of Current Contracts/Projects
- List of Completed Contracts/Projects
- List of Proposed Subcontractors/Suppliers
- Bidders List
- Target Firm Participation Commitment Form
- Target Firm Good Faith Effort Form
- Letter of Intent and Affirmation Form
- Bid Guarantee



Bid Submittal Instructions (Continued)

- The Commission has the right to:
 - Accept or reject any or all bids
 - Waive any minor errors, informalities in any bid
- Bids received are considered public information.



Bidders Questions

Bidder questions must be submitted to spbl@goventura.org by **Wednesday, April 30, 2025 by 4:00 p.m. PST**

- No phone inquiries.
- No email inquiries to Project Manager.
- Only clarifications/revisions to contract documents from the Commission, issued by addendum, are considered official.
- Bidders must acknowledge receipt of all addenda to the IFB in their Bid.
- Failure to acknowledge receipt of all addenda may render the Bid non-responsive.



Common Bidder Errors

- Bid submittal must be complete by the designated due date and time.
- All required documents for a complete bid package must be correctly completed and submitted.
- Signed Letters and Bid Forms including certifications must be correctly completed and submitted.
- Failure to meet insurance requirements.



Coordination with Sierra Northern Railway

- Railroad is out of service on the SPBL between Mile Post 423.2 and 423.5 with de-railers at either end.
- Railroad safety briefings and coordination procedures.



Timeline / Summary

IFB Timeline	
Date	Action
4-Apr-25	Commission Consideration of Approval to Release IFB
7-Apr-25	IFB Release Date
16-Apr-25	Pre-Bid Conference & On-Site Job Walk
30-Apr-25	Questions & Requests for Clarification or Approved Equals
16-May-25	Bid Due Date NLT 3pm PST
30-May-25	Agenda Publication Date
6-Jun-25	Commission Consideration of Contract Award
10-Jun-25	Notice to Proceed Target Date

- **April 2025** – Release IFB for Construction Contractor
- **June 2025** – Commission to Consider Approval of Construction Contractor Selection & Contract, Issue NTP
- **Summer 2025** – Mobilization and Off-Site Construction Activities, On-Site Construction and Demobilization, Permitting and coordination of additional protective measures.
- Complete in-water work by **September 15, 2025**.
- Construction complete by **October 31, 2025**.



Job Walk



Parking Location: Shiell's Park 649 C St. Fillmore, CA 93015



Job Walk (Continued)

- Job Walk Date: **April 16, 2025 at 1:00 PM PST**
- Project Location Access:
 - Walk along Trees on Old Telegraph Rd.
 - **DO NOT** enter the Santa Paula Branch Line railroad right-of-way (ROW) without proper escort from VCTC and railroad operator, Sierra Northern Railway.
- Required PPE:
 - **Orange Safety Vest** meeting ANSI Class II or III Reflective Standards
 - **Safety Glasses** meeting ANSI Z87.1 Standards
 - **Plastic Hard Hat** as specified by ANSI, CAL/OSHA and/or Fed/OSHA
 - **Safety Boots**
- Cameras are allowed.



Questions?