



# Los Angeles – San Diego – San Luis Obispo Rail Corridor Agency

Ventura County Transportation Commission | January 5, 2024



# What is the LOSSAN Agency?

## The LOSSAN Agency

11-member Board of Directors composed of regional transportation and planning agencies

Nine Member Agencies

Four Ex-Officio Members

Managing agency:  
Orange County  
Transportation Authority



- The Los-Angeles-San Diego-San Luis Obispo (LOSSAN) Rail Corridor Agency (Agency) is a joint powers authority comprised of regional transportation and planning agencies.
- Senate Bill 1225, signed into law in 2012, enabled regional governance of the state-funded Pacific Surfliner service by the LOSSAN Agency
  - Accomplished through an annual operating agreement between the LOSSAN Agency and Amtrak
- The LOSSAN Agency assumed management of the Pacific Surfliner service in July 2015 following execution of an interagency transfer agreement with the State of California
- The LOSSAN Agency coordinates with member agencies and stakeholders to improve overall intercity passenger rail service and improvements along the corridor

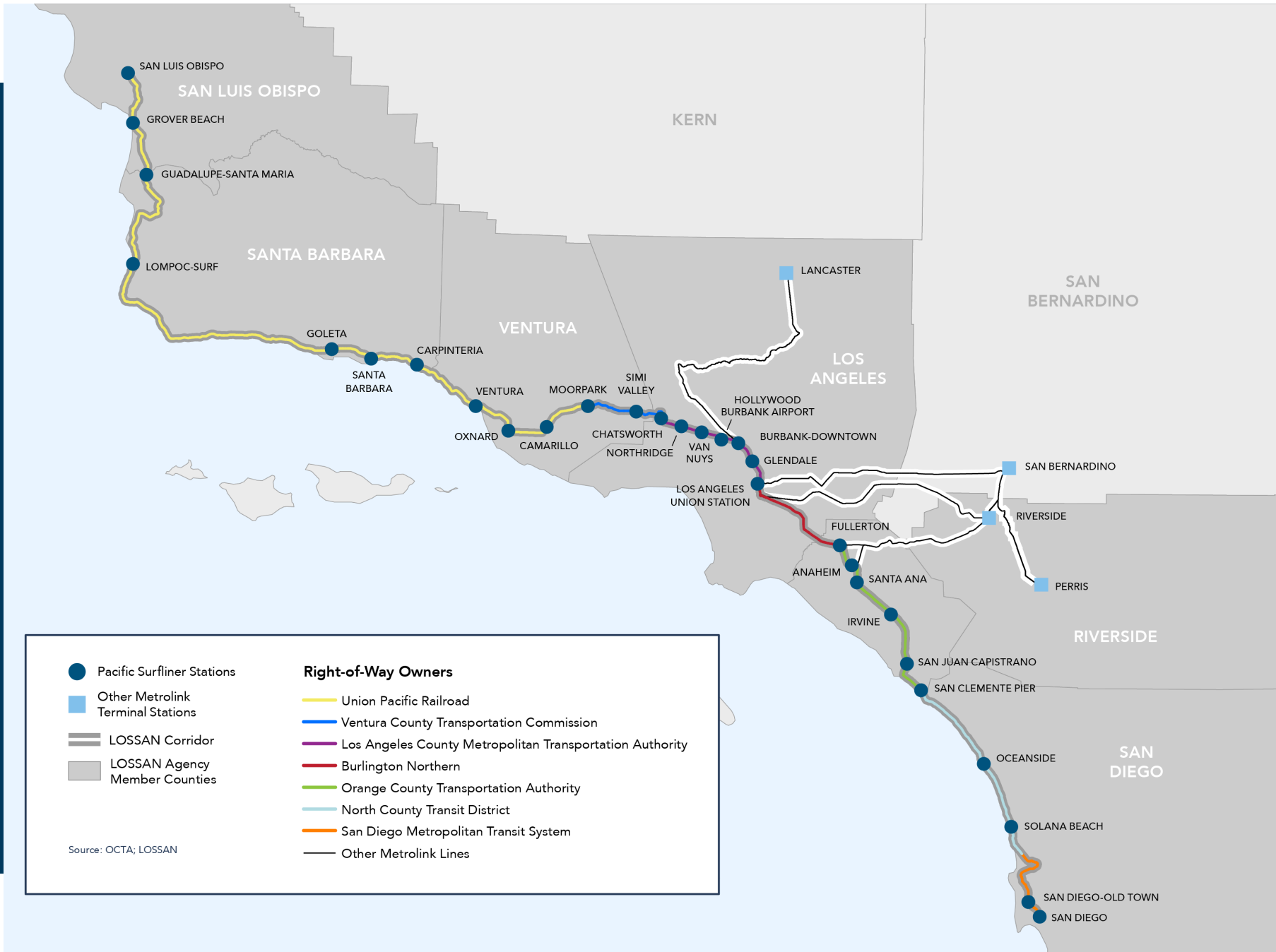
# LOSSAN Rail Corridor Overview

351-mile rail corridor through six counties

7 Right-of-Way Owners (55% freight owned)

29 Pacific Surfliner Stations

Hosts busiest state-supported Amtrak route in United States – *Pacific Surfliner*



Pacific Surfliner Stations	<b>Right-of-Way Owners</b>
Other Metrolink Terminal Stations	Union Pacific Railroad
LOSSAN Corridor	Ventura County Transportation Commission
LOSSAN Agency Member Counties	Los Angeles County Metropolitan Transportation Authority
	Burlington Northern
	Orange County Transportation Authority
	North County Transit District
	San Diego Metropolitan Transit System
	Other Metrolink Lines

Source: OCTA; LOSSAN

# LOSSAN Rail Corridor Overview

3 passenger rail operators;  
2 freight operators

41 stations (29 Pacific Surfliner, 12 commuter only)



# LOSSAN Rail Corridor Overview

- Federal fiscal year 2018-19\* more than 8.15 million passengers on the LOSSAN Corridor, 5.37 million on COASTER & Metrolink combined, 2.78 million on Amtrak *Pacific Surfliner*
- 26 Amtrak Pacific Surfliner trains/day, 137 commuter trains/day, 70+ freight trains/day
- U.S Department of Defense identified corridor part of Strategic Rail Corridor Network (STRACNET) – access to Marine Corps Base Camp Pendleton and Port of San Diego
- The LOSSAN Rail Corridor is a vital link for goods movement
- During Highway 101 closure in 2018, Amtrak Pacific Surfliner provided a key link between Ventura and Santa Barbara

# Coastal Resiliency

Coastal Resiliency and Bluff Stabilization is a high priority for LOSSAN in:

- San Diego
- Orange
- Ventura
- Santa Barbara

Landslides in San Clemente in two main areas shutdown rail service for **251** days out of Federal Fiscal Year 2023



*Impact of sea level rise seen in San Clemente*

## Cyprus Shores – San Clemente

- In September 2021 at Cyprus Shores area of San Clemente, tracks moved +28-inches laterally toward ocean
- In September 2022 additional slope movement due to high tides, waves, and storm surge
- OCTA constructed ground anchors placed in bedrock to arrest rail slide movement

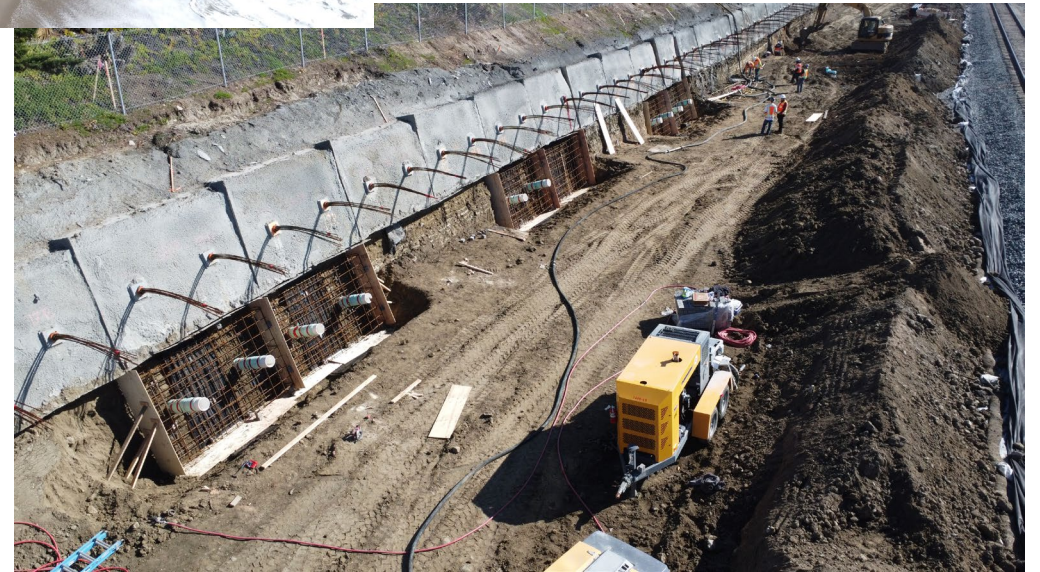
# Cyprus Shores – San Clemente

- Tracks closed September 30, 2022 through April 16, 2023.
- Cost for repairs exceeded \$13 million, not including right-of-way and environmental mitigation costs
- Tracks reopened April 17, 2023 and closed again April 27, 2023 for slide below Casa Romantica.



- These aerial views show the scope of the stabilization efforts

- The work involved significant excavation and the installation of 220 tiebacks along with 110 grade beam panels



# Casa Romantica – San Clemente

- On April 27, 2023, the hillside beneath the Casa Romantica Gardens and Cultural Center failed and the ensuing slide fouled the tracks, prompting a complete rail closure
- Track reopened May 27, 2023 and shut down again June 5, 2023.
- As a temporary fix, a 250 foot by 12 foot soldier pile barrier wall was constructed to keep additional slides from obstructing the tracks
- The total cost for the project was approximately \$6 million
- Tracks fully reopened July 17, 2023

- Slope failure along with the installation of soldier pile barrier wall (detail in inset) immediately adjacent to the tracks

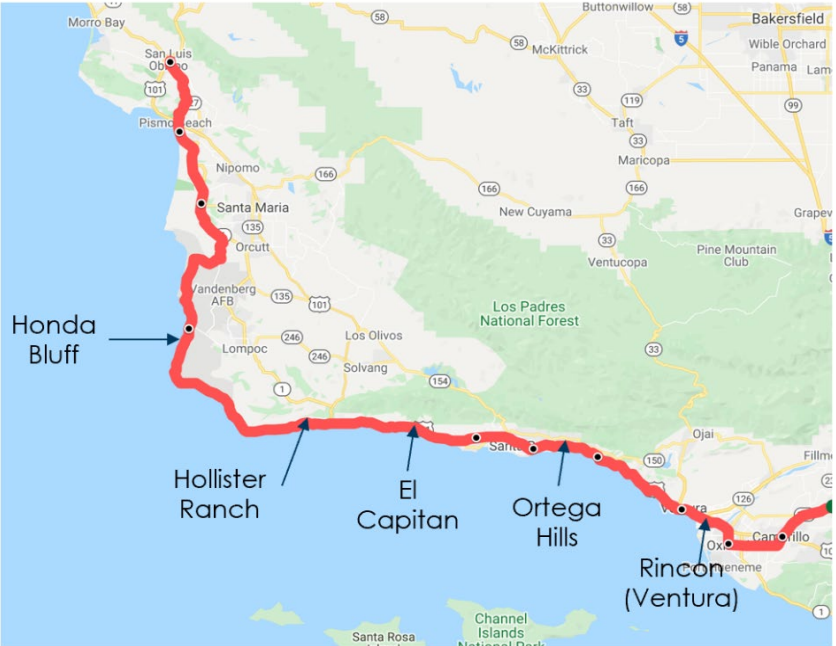




# Santa Barbara and Ventura Counties

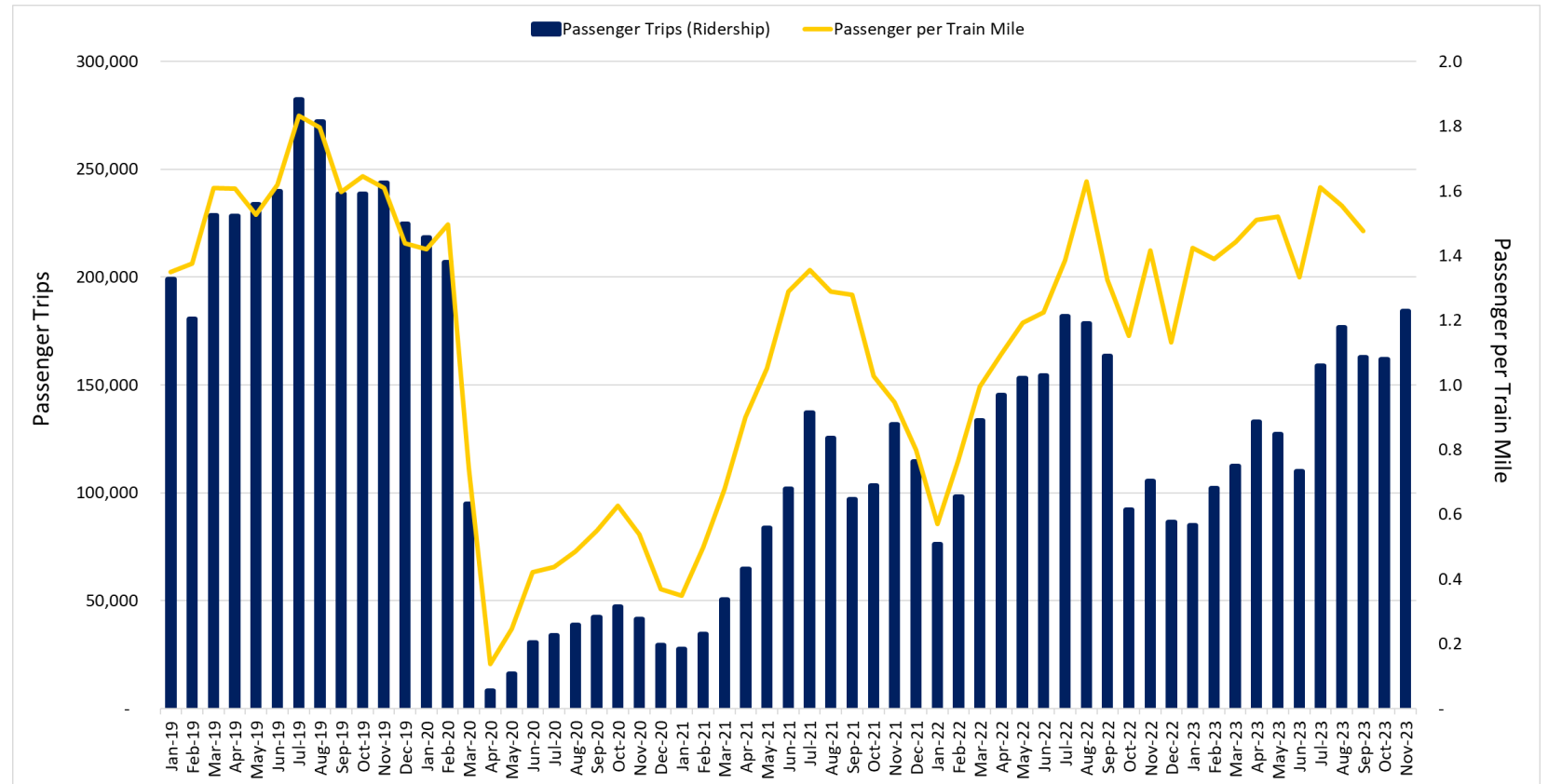
## Upcoming Capital Projects

- There are Coastal Resiliency challenges along the LOSSAN Corridor.
- LOSSAN is working with Union Pacific Railroad on short term stabilization repairs at 5 key areas on the north end of the corridor.
- SANDAG is performing short term repairs on the southern end of the corridor and beginning design on long term track relocation.
- Orange County has initiated a study to define short- and mid-term solutions to address resiliency issues along the corridor in south Orange County.



# LOSSAN Rail Corridor Ridership and Service Overview

- 20 Amtrak *Pacific Surfliner* trains/day (10 roundtrips between San Diego to Los Angeles)
- 5 roundtrips extend north of Los Angeles to Goleta
- 2 roundtrips extend to San Luis Obispo



- Post COVID, Pacific Surfliner passengers per train mile actually met or exceeded pre-pandemic levels during some summer months

\* Pre-pandemic values



# X Games California

Partnership

- X Games California Finals in Ventura July 21-23
- Added train service to align with event schedule
- Joint messaging / cross-promotion with partners
- First-ever branded train wrap for the Pacific Surfliner
- Close collaboration between LOSSAN, X Games, Visit Ventura and various regional partners including VCTC, Ventura County Coast, City of Ventura, and others.
- Compared to the same weekend last year, there was a 482% increase in Pacific Surfliner ridership to/from Ventura



# Train Wrap

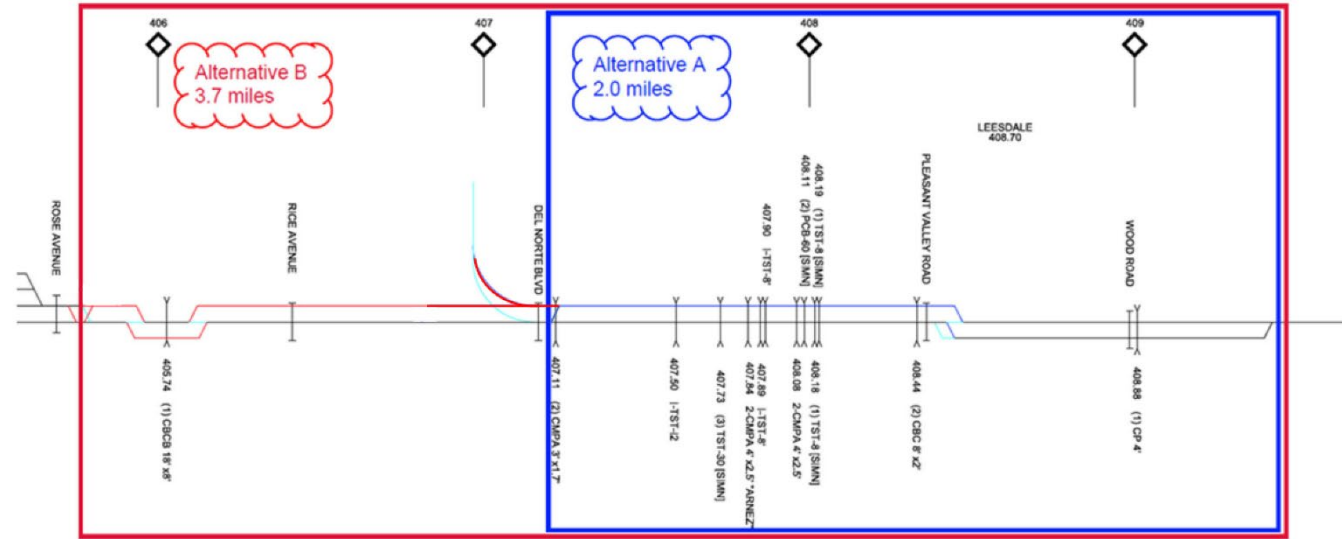


# Rail2Rail Program

- The Rail2Rail (Program) agreement between LOSSAN, Amtrak and Metrolink allows Metrolink passengers with monthly passes to ride Pacific Surfliner trains between the station pairs identified on its ticket. Includes a reciprocal program for Pacific Surfliner monthly pass holders on Metrolink.
- Agreement also includes “Code Share” trains, which are select trains that accept any valid Metrolink ticket type.
- This benefit is provided at no additional cost to the rider, with the reimbursement for riders utilizing the service paid by each agency.
- In November 2023, the “Code Share” program was expanded as a pilot from two Pacific Surfliner trains in each direction between Los Angeles and Ventura to all trains (five in each direction). Reciprocal for Pacific Surfliner riders on Metrolink.
- The LOSSAN Agency will continue to work with Metrolink and VCTC to develop additional programs improvements based on analysis of how customers are utilizing the program.

# Leesdale Siding Upgrade and Expansion

- Includes extending the existing 3,300 ft Leesdale siding.
- Several alternatives are being assessed, will likely proceed with alternative to extend the siding to 3.7 miles.
- Allows for greater operational flexibility for Pacific Surfliner and Metrolink service.
- Project is fully funded through construction, funding partnership between VCTC and LOSSAN
- Current Project Estimate - \$69.5M



# Camarillo Pedestrian Undercrossing

- Project will construct new undercrossing to connect platforms 1 & 2 and add ADA improvements at the station.
- Current overcrossing does not meet current ADA requirements and limits access for riders with mobility needs.
- Completion will allow for greater usage of platform 2, due to increased access of the platform, eliminating 5 minutes of scheduled dwell time.
- Project is fully funded through construction, funding partnership between VCTC and LOSSAN. The City of Camarillo is leading the project.
- Current Project Estimate - \$18.0M



QUESTIONS?