



Santa Paula Branch Line Sespe Creek Overflow Bridge Repair Construction Management RFP Pre- Proposal Conference

November 14, 2023

Presented by Amanda Fagan
Director of Planning and Sustainability





SPBL Background

- **1995:** VCTC purchased SPBL and Ventura Branch Line from Southern Pacific for \$8.5M
- **2001:** VCTC executed 20-year operating lease with Fillmore & Western Railway (FWRY) for the operational ROW only (15' of centerline)
- **2001 – 2021:** FWRY operated railroad, including tourist excursion trains and movie production
- December 2021: Commission approved new Railroad Lease and Operations Agreement between VCTC and Sierra Northern Railway
- Since January 2022, Sierra Northern operates and maintains the Branch Line and provides freight and film service
- Tourist & excursion service provided through sister company Mendocino Railway





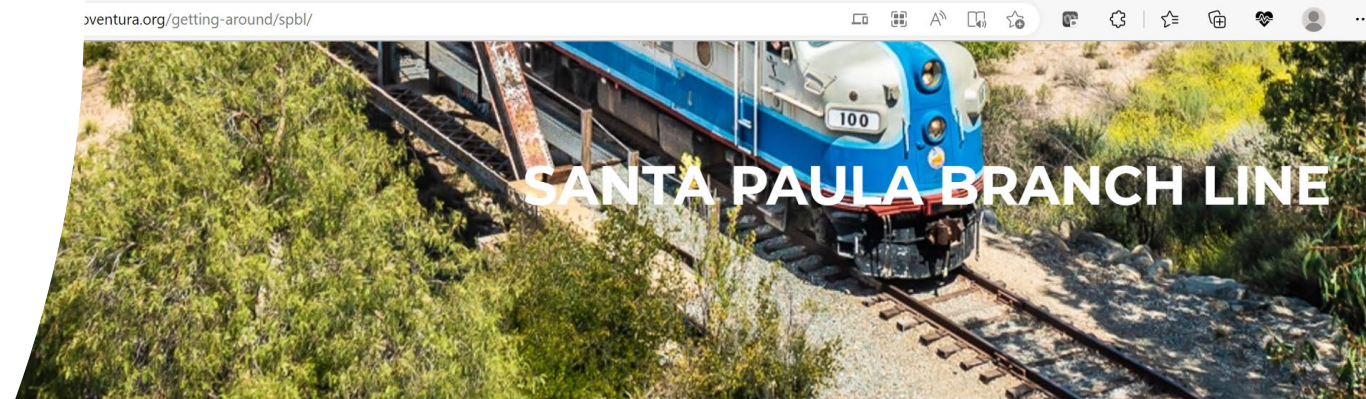
SPBL Web Page

<https://www.goventura.org/getting-around/spbl/>

spbl@goventura.org

- Key Information and Links

- SPBL History
- Railroad Safety & Access
- Rail Car Storage
- SPBL Trail
- Parcels & Mile Posts Web Map
- Online Questions & Comments Form



PAULA BRANCH LINE RAILROAD

Santa Paula Branch Line (SPBL) extends for 32 miles from the East Ventura / Montalvo train station, through the Cities of Ventura, Santa Paula, and Fillmore, to the incorporated community of Piru, with 29 miles of active track. Originally built in 1887 by the Southern Pacific railroad, the SPBL remains an active short line railroad with freight, tourist and excursion, film and television, and research and development rail operations.

The Ventura County Transportation Commission (VCTC) acquired the SPBL railroad in 1995 for use as a multimodal corridor, including freight rail, bicycle and hiking trail, pipelines and utilities, recreational parks, and to preserve the corridor for possible future commuter rail service.



Sespe Creek Overflow Bridge

- Located at approx. Mile Post 423.44 west of Fillmore, CA
- Constructed in 1969
- Total Length: 450 feet
- Vertical Clearance: 14 feet
- 15 Spans of 29 feet 10 inches each



423.44 Looking East





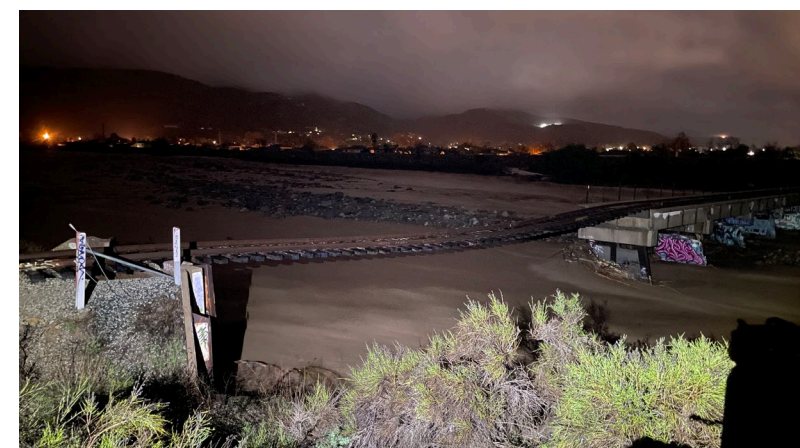
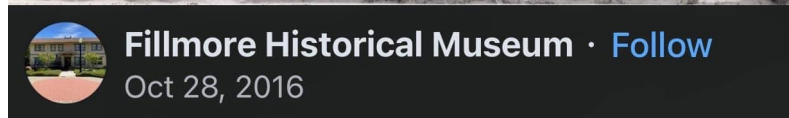
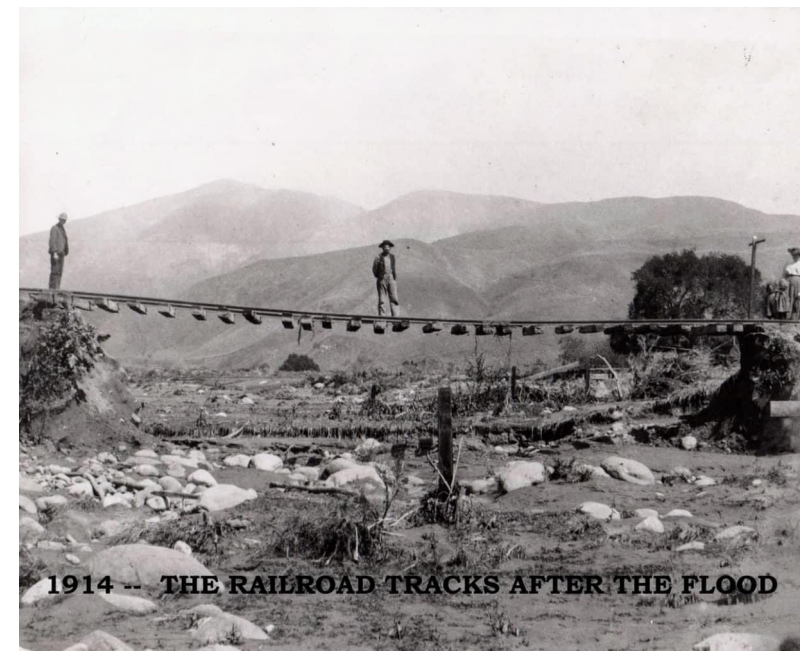
Sespe Creek Overflow Bridge





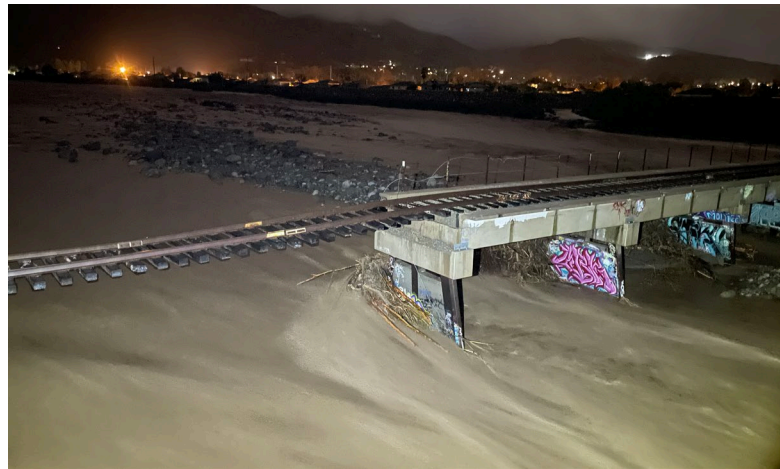
Sespe Creek Overflow Bridge Storm Damage

- January 10, 2023
- Series of heavy storms washed out 3 spans (approx. 90 feet) of bridge
- Damaged spans located at western end of bridge
- Require reconstruction to pre-disaster design, capacity and function to restore rail service





Storm Damage Illustrative Photos





Planning & Design Timeline

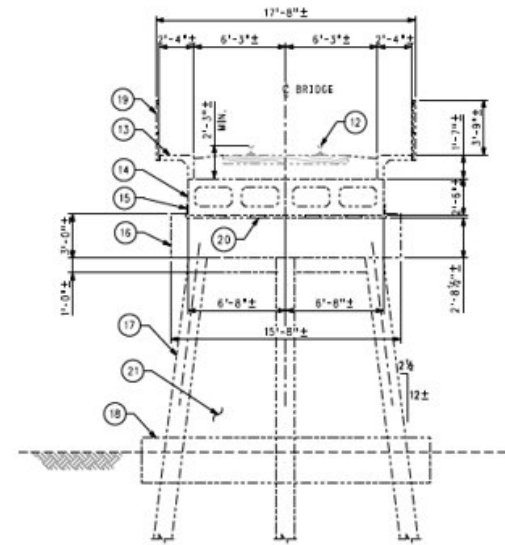
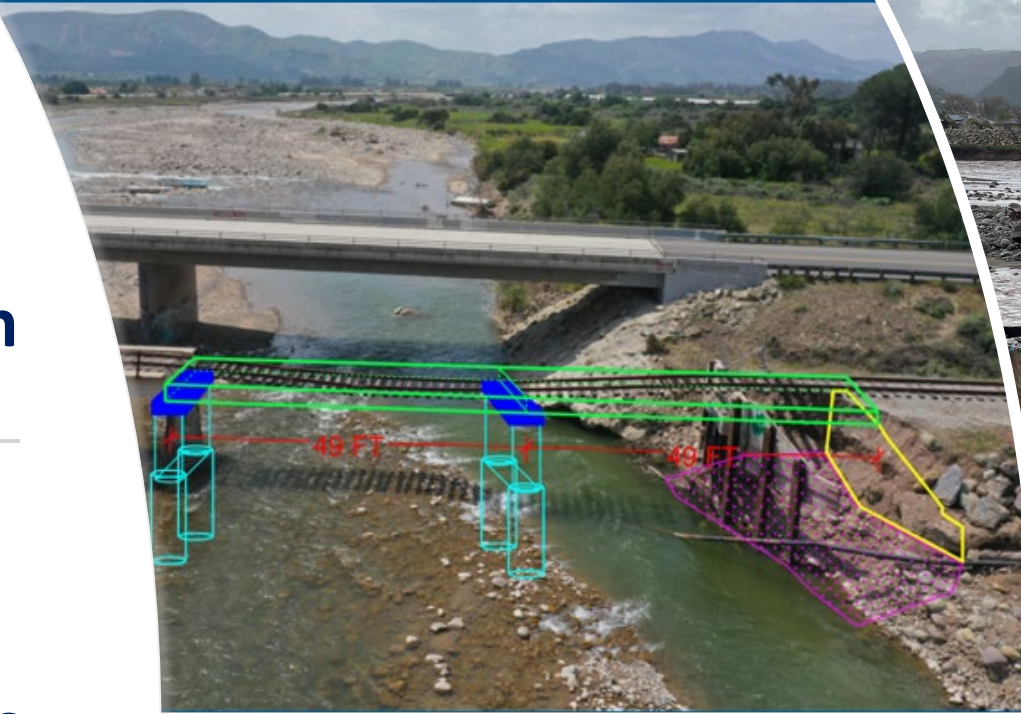
- Accelerated design and planning phase
- 90% designs completed
- Environmental permitting underway



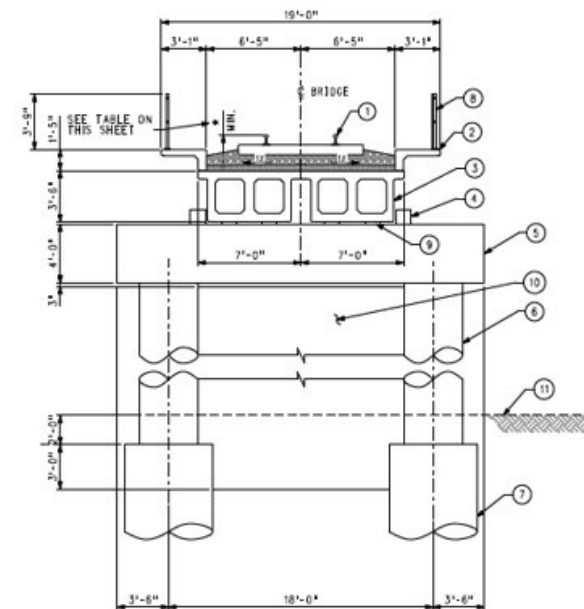


Planning & Design Status

- Design team completed 90% design submittal to VCTC for review on 11/1/2023
- Design Alternative 1 selected – two new bents, pier caps, 49-foot spans / new abutment



TYPICAL SECTION – EXISTING BENTS
SCALE: 1/4" = 1'-0"



TYPICAL SECTION – NEW BENTS 2 & 3
SCALE: 1/4" = 1'-0"



Sespe Overflow Bridge Reconstruction Timeline

- Based on field study, environmental, geotechnical and hydrology findings, 90% design with plans & specs completed Nov. 1, 2023
- Released RFP for Construction Management Support: Nov. 3, 2023
- Projected release Request for Bids for Construction Firm: Jan./Feb. 2024
- Construction period: May – Aug. 2024





CM Request for Proposals

- Commission approved release of RFP on November 3, 2023
- RFP Purpose
 - Construction management support services
 - Restore pre-disaster design, capacity, and function of Sespe Creek Overflow railroad bridge
- General Scope of Work
 - Professional engineering services for construction management, including inspections, environmental support, materials testing, surveying, and verifying Project constructed IAW plans & specs





CM Scope of Work

- Construction management and engineering inspection services for reconstruction of 90-foot section of the Sespe Creek Overflow Railroad Bridge, including abutment, two piers, and 150-foot section of railroad tracks, ties and ballast as described in RFP **SECTION 6:**
- Contract Administration
- General Inspection
- Change Order management
- Environmental Compliance
- Surveying
- Material Testing
- Test Data
- Plan Interpretation
- Pre-Construction Conference
- Safety Coordination
- Scheduling
- False Work and Shop Drawings
- Progress Statements
- Final Walk Through & Inspection
- As-Built Plans
- Contract Records





CM Selection Process & Timelines: RFP Section 4

| MILESTONE | DATE & TIME | NOTES |
|------------------------------------|--|--|
| RFP Release Date | November 3, 2023 | |
| Questions Due to VCTC | Friday, Nov. 17, 2023 | Submit all inquiries via email to: afagan@goventura.org |
| Proposals Due | December 8, 2023 NLT 4:00pm Pacific | |
| Proposals Evaluation | December 11 – 20, 2023 | |
| Interviews (at VCTC discretion) | December 21-22, 2023 (if needed) | |
| Contractor Selection and Award | January 5, 2024 | |
| Contract Execution | January 5, 2024 | |

<https://www.goventura.org/work-with-vctc/contracts>



Proposal Content & Format: RFP Section 7

- Cover Letter
- Signed Addenda
- Firm Information
- Organizational Chart / Proposed Team
- Key Personnel Resumes
- Experience & References
- Project Management Approach
- Schedule Management Approach
- Fee Schedule
- Exceptions
- Appendices



Proposal Submittal: Section 8

- Submit in writing with one signed original and two (2) hard copies, along with one (1) original of the Fee Proposal in a separate sealed envelope, to:

Ventura County Transportation
Commission

Attn: Amanda Fagan

751 E. Daily Dr., Suite 420

Camarillo, CA 93010 5

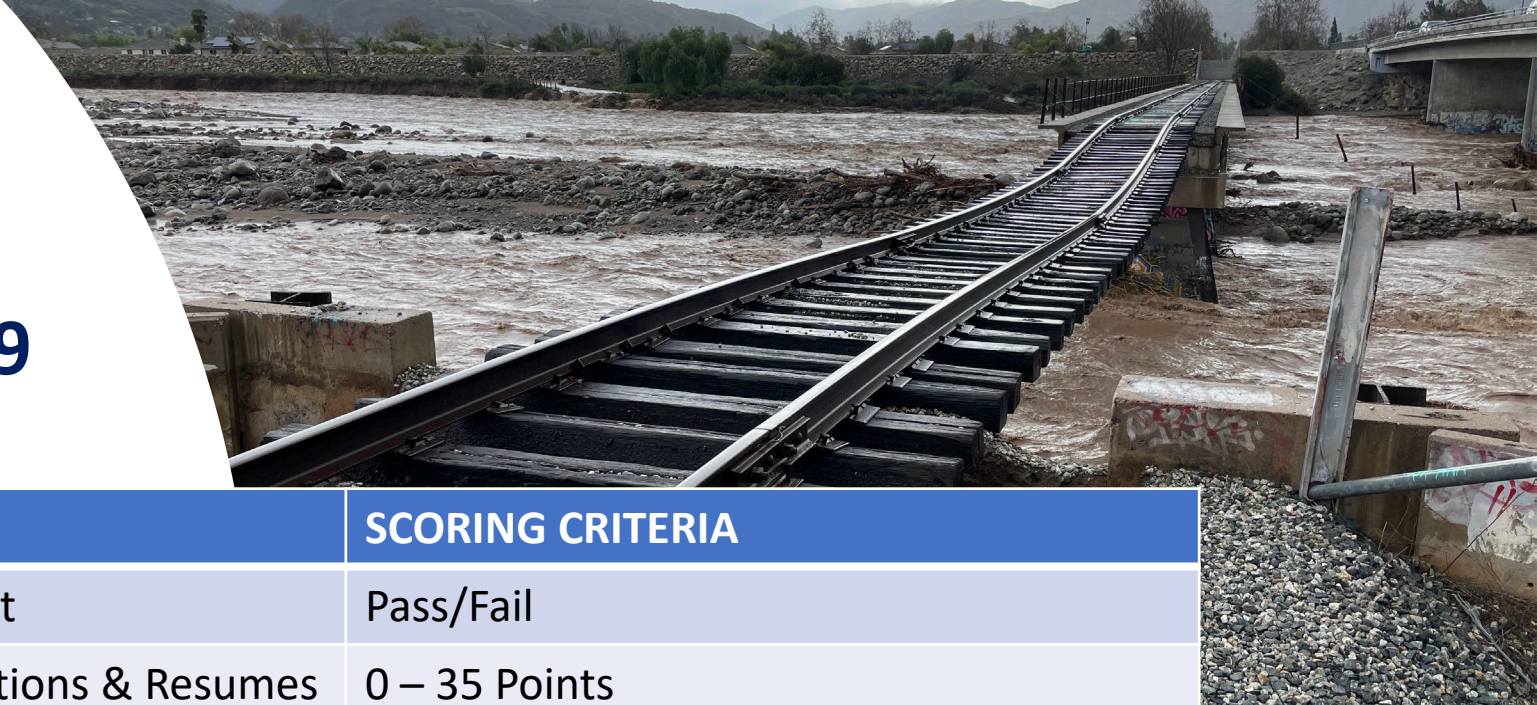
- In addition, submit electronically to: afagan@goventura.org



- VCTC must receive both electronic and hard copy versions to consider a proposal
- Late proposals may not be accepted
- Proposers are responsible for submitting their proposals completely and on time



Selection Criteria: Section 9



| CRITERIA | SCORING CRITERIA |
|--|---------------------|
| Proposal Package Content | Pass/Fail |
| Proposed Team Qualifications & Resumes | 0 – 35 Points |
| Project Experience | 0 – 30 Points |
| Experience with FEMA Public Assistance | 0 – 10 Points |
| Client References | 0 – 5 Points |
| Project Management Approach | 0 – 10 Points |
| Schedule Management Approach | 0 – 10 Points |
| Total | 100 Points Possible |



QUESTIONS?