



VENTURA COUNTY TRANSPORTATION COMMISSION
Transportation Technical Advisory Committee (TTAC)

AGENDA

Wednesday, April 20, 2022
1:30 P.M.

The meeting will be via ZOOM Webinar

Please click the link below to access the webinar:

<https://us02web.zoom.us/j/89400882594?pwd=L0UwMXJDOHVxOFpjZFNvNHVwQIZUZz09>

Call-in Option:

Dial: US 1-669-900-6833

Webinar I.D. 894 0088 2594

Passcode: 12345

On March 17, 2020, the Governor issued Executive Order N-29-20 suspending certain provisions of the Ralph M. Brown Act to allow local legislative bodies to conduct their meetings completely telephonically or by other electronic means. On June 11, 2021, the Governor subsequently issued Executive Order N-08-21 maintaining the suspension of certain provisions of the Brown Act to continue to allow for local legislative bodies to conduct their meetings completely telephonically or by other electronic means through September 30, 2021. As such, VCTC will continue to conduct its meetings by teleconference, its commissioners will participate in the meeting from individual remote locations, and no physical location will be open to the public for the Commission meeting.

Members of the public are encouraged to attend the meeting remotely. Members of the public who wish to address the committee on an item to be considered at this meeting are asked to please use the raise hand feature in Zoom (or *9 if you are calling into the Zoom meeting) at the time the Chairperson requests public comments. The meeting host will then advise you when it is your turn to speak. Verbal public comments are limited to three minutes.

In compliance with the Americans with Disabilities Act and Government Code Section 54954.2, if special assistance is needed to participate in this meeting, please call 805.642.1591 x111 at least 48 hours before the meeting to help staff in assuring those reasonable accommodations are made to provide accessibility.

ITEM 1 CALL TO ORDER

ITEM 2 INTRODUCTIONS & ANNOUNCEMENTS

ITEM 3 PUBLIC COMMENTS

ITEM 4 AGENDA ADJUSTMENTS

ITEM 5 APPROVAL OF MINUTES – Action

- *Waive the reading and approve the minutes of the March meeting.*

ITEM 6 CALTRANS LOCAL ASSISTANCE VERBAL UPDATE

- *Receive and File*

ITEM 7 SCAG REGIONAL DEDICATED TRANSIT LANES STUDY PRESENTATION

- *Receive and File*

ITEM 8 SCAG REGIONAL DATA PLATFORM PRESENTATION

- *Receive and File*

ITEM 9 FUTURE AGENDA ITEMS – For Discussion

- Periodic Highway Construction Updates
- Regional Transportation Funding & Planning
- Federal Infrastructure Program Legislation
- Metrolink SCORE Project (Simi Double-Track Project)

ITEM 10 ADJOURNMENT



**VENTURA COUNTY TRANSPORTATION COMMISSION
TRANSPORTATION TECHNICAL ADVISORY COMMITTEE (TTAC)**

**Wednesday, March 16, 2022
1:00 PM via ZOOM Webinar**

MEETING MINUTES

MEMBERS PRESENT:

Nader Heydari, City of Thousand Oaks (Chair)
Chris Kurgan, County of Ventura (Vice Chair)
James Campero, City of Camarillo
Daniel Kim, City of Moorpark
Debbie O'Leary, City of Oxnard
Steven Almcrantz, City of Port Hueneme
Justin Link, City of Simi Valley
Jeff Hereford, City of Ventura
Letitia Austin, Port of Hueneme

MEMBERS ABSENT:

City of Fillmore
City of Ojai
City of Santa Paula

EX OFFICIO:

Robert Wong, Caltrans
Ben Cacatian, Ventura County Air Pollution Control District
Margaret Heath-Schoep, Gold Coast Transit District

VCTC STAFF PRESENT:

Amanda Fagan, Transportation Planning Director

ITEM 1 CALL TO ORDER

Chair Heydari called the meeting to order at 1:06 p.m. via ZOOM.

ITEM 2 INTRODUCTIONS AND ANNOUNCEMENTS

Mr. Ben Cacatian, VCAPCD, reminded the committee to visit www.vcapcd.org/RACM and review Ventura County's Reasonably Available Control Measures Analysis for Transportation Control Measures (TCMs).

ITEM 3 PUBLIC COMMENTS - None.

ITEM 4 AGENDA ADJUSTMENTS - None.

ITEM 5 APPROVAL OF MINUTES

ACTION:

Link moved, seconded by O'Leary, that the committee approve the February 16, 2022 meeting minutes. The motion passed unanimously.

ITEM 6 CALTRANS LOCAL ASSISTANCE UPDATE

Mr. Robert Wong, Caltrans District 7, announced the upcoming training opportunities including:

- April 19-20 – Getting Your Federal-Aid Project Started (8:30 a.m. - 12:30 p.m.)
- April 20 - Local Agency Project Delivery Workshop (9:30 a.m. - 11:30 a.m.)
- April 25-28 – Resident Engineer Academy (8:30a.m. - 4:30 p.m.)
- April 26 – Emergency Relief Program (8:00 a.m. - 3:00 p.m.)
- June 15 – Deadline for the State Active Transportation Program Call For Projects

Mr. Wong also announced that the Cities of Ventura (\$5M) and Oxnard (\$3.5M) were awarded more than \$5M in Clean California grants and that there may be a second Call for Projects as well.

ITEM 7 FHWA ALTERNATIVE FUEL CORRIDORS NOMINATION

Mr. Dan Kopulsky, Caltrans District 7, presented the committee with a presentation on alternative fuel corridors including 1) background; 2) pending and current corridors; and 3) nomination details.

ITEM 8 FUTURE AGENDA ITEMS – For Discussion

The committee discussed adding the SCAG Regional Dedicated Transit Lanes Study in April.

- Periodic Highway Construction Updates
- Regional Transportation Funding & Planning
- Federal Infrastructure Program Legislation
- Metrolink SCORE Project (Simi Double-Track Project)

ITEM 9 ADJOURNMENT

Chair Heydari adjourned the meeting at 1:29 p.m.



Item 8

April 20, 2022

MEMO TO: TRANSPORTATION TECHNICAL ADVISORY COMMITTEE (TTAC)
FROM: AMANDA FAGAN, DIRECTOR OF PLANNING AND SUSTAINABILITY
SUBJECT: SCAG REGIONAL DATA PLATFORM / LOCAL DATA EXCHANGE

RECOMMENDATION:

- Receive a presentation on the Southern California Association of Governments Regional Data Platform and Local Data Exchange.

BACKGROUND:

The Southern California Association of Governments (SCAG) Regional Data Platform (RDP) launched in 2017 to provide a collaborative data sharing platform designed to facilitate better planning at all levels and contribute to alignment with the Connect SoCal Regional Transportation Plan / Sustainable Communities Strategy (RTP / SCS). The RDP provides “enhanced data, advanced tools, and extensive resources to support stronger and more integrated local planning towards a healthier, equitable, safer, and more sustainable region.”

SCAG also launched a Local Data Exchange (LDX) to gather up-to-date information from local agencies to support preparation of the 2024 Connect SoCal RTP/SCS. The LDX will collect from local jurisdictions updated information on land use, growth, climate policies, and other information to support the regional transportation planning process.

DISCUSSION:

SCAG Planning Division Program Managers Tom Vo and Kevin Kane, PhD, will provide an overview of the process to develop the 2024 RTP/SCS and introduce and demonstrate the LDX and RDP.



[This page intentionally left blank.]

Regional Data Platform & Local Data Exchange

Presentation to SCAG Subregional Technical Audience

Tom Vo & Kevin Kane, PhD

Program Managers, Planning Division

February – April 2022

www.scag.ca.gov

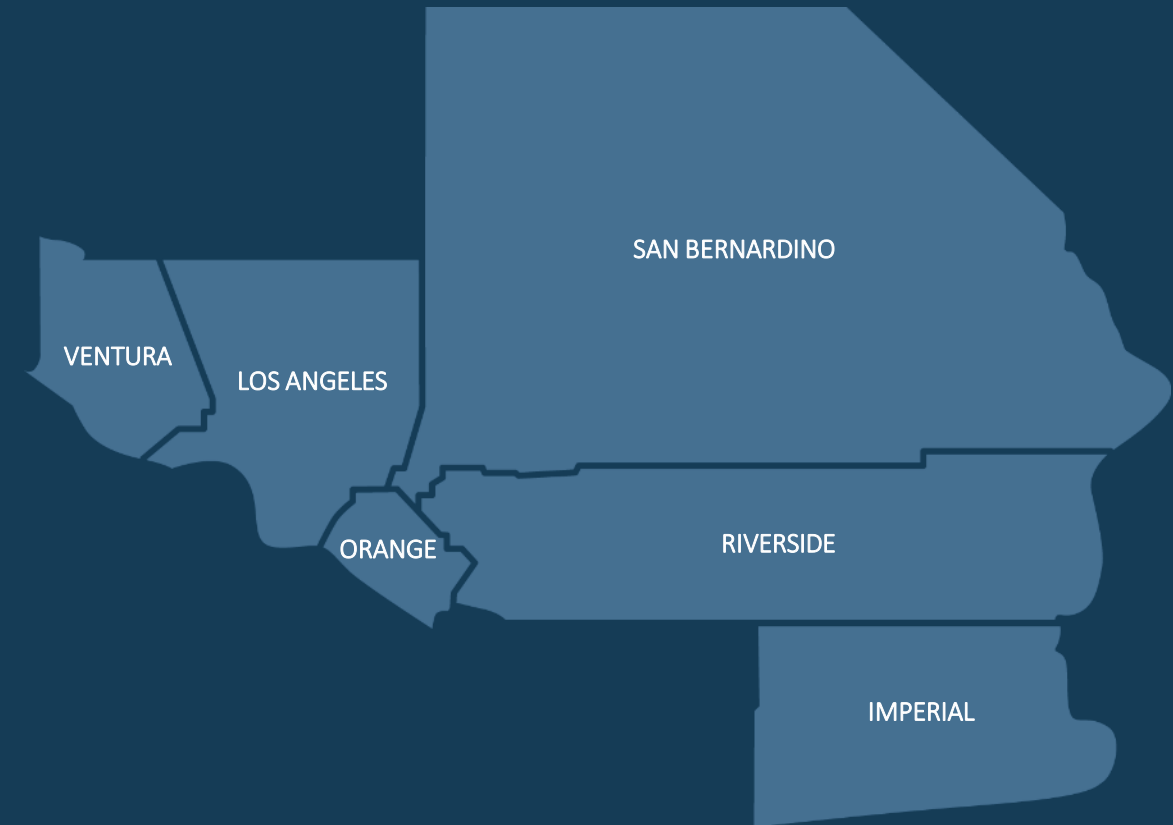


Presentation Outline

- 1) Connect SoCal 2024
- 2) Local Information Services Team (LIST)
- 3) Local Data Exchange Process (LDX)
- 4) Data/Map Books
- 5) Regional Data Platform (RDP)
- 6) RDP – LDX System Demo

Connect SoCal 2024: What is an RTP/SCS?

- Long-term vision and investment framework
- State Requirements (SB 375)
 - Integrated regional development pattern & transportation network
 - Reduce GHG emission to meet targets for passenger vehicles
- Federal Requirements
 - Updated every 4 years
 - 20+ years into the future
 - Revenues = Costs
 - Meets regional emission standards
 - Public involvement



Connect SoCal 2024: Development Update



COMPLETED

- ✓ Regional & County Forecast
- ✓ Relaunched Working Groups
- ✓ Regional Data Platform Launch



LOCAL DATA EXCHANGE (LDX)

- Soft Launch – February 23rd
- Complete Launch – May 4th
- Input Deadline – December 2nd

Local Information Services Team (LIST) Introduction

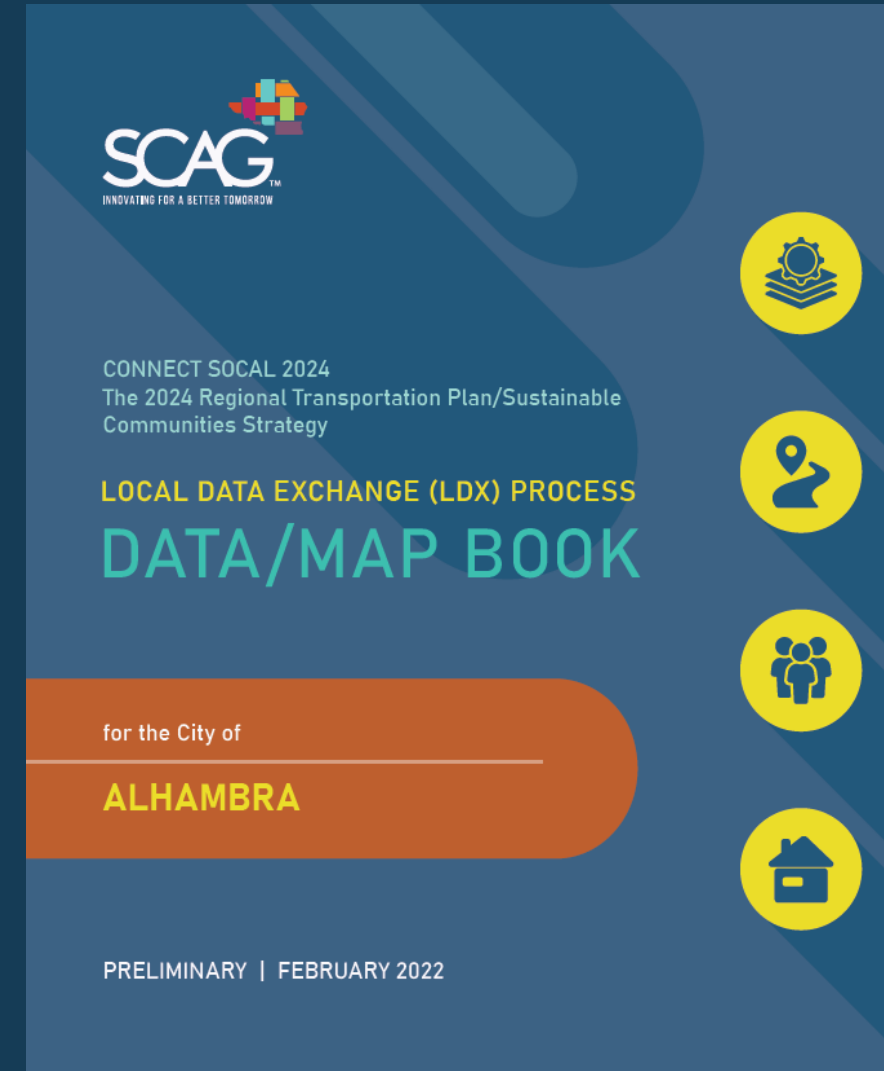


- Purpose – Coordinate, plan, and develop a system to (1) link SCAG’s value-added products (e.g., data, applications, etc.) to help address local information needs, (2) deliver technical assistance, and (3) provide local staff an opportunity to offer feedback on how SCAG can improve our products to facilitate better collaboration, regionally and locally
- LIST is focusing on the Local Data Exchange (LDX) process to solicit inputs from local jurisdictions
- Request technical assistance at list@scag.ca.gov



Local Data Exchange (LDX)

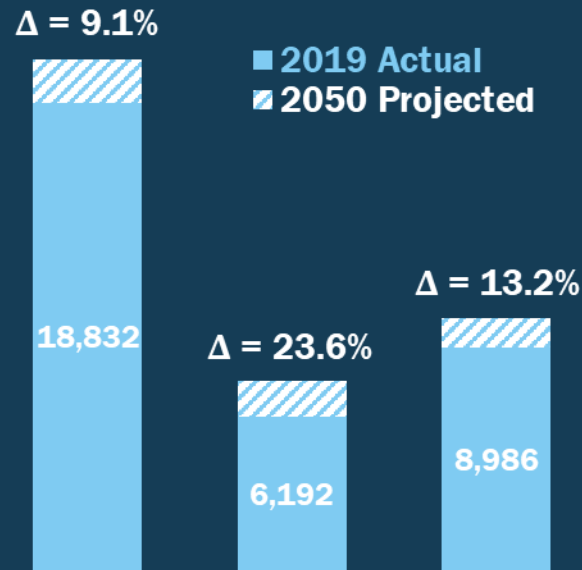
- Main objective: Present and review roughly 30 data layers related to RTP/SCS development:
 - Available in Data/Map Books and RDP
 - Soliciting local update and corrections on core land use layers and preliminary forecast
 - Feedback and editing opportunity on certain regional growth & transportation data
 - Third-party data related to regional growth objectives included for reference
- Also...
 - Only time in the 4-year plan cycle where SCAG “visits” every jurisdiction
 - Chance to share regional priorities and tools
 - Chance to discuss local concerns and visions for the future
 - *Chance to align local and regional visions*



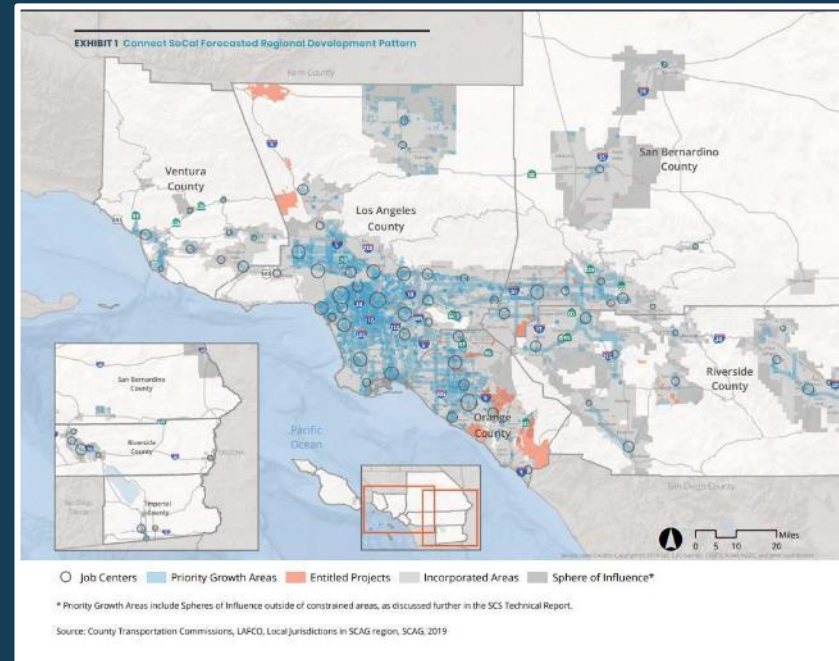
Objective: *Forecasted Regional Development Pattern*

“set forth a *forecasted development pattern for the region*, which, when integrated with the transportation network, and other transportation measures and policies, will reduce the greenhouse gas emissions from automobiles and light trucks to achieve, if there is a feasible way to do so, the *greenhouse gas emission reduction targets* approved by the state board, and (viii) allow the regional transportation plan to comply with Section 176 of the *federal Clean Air Act* (42 U.S.C. Sec. 7506).” California Government Code 65080(b)(vii)

2050 Preliminary Projections (1,000s), SCAG Region



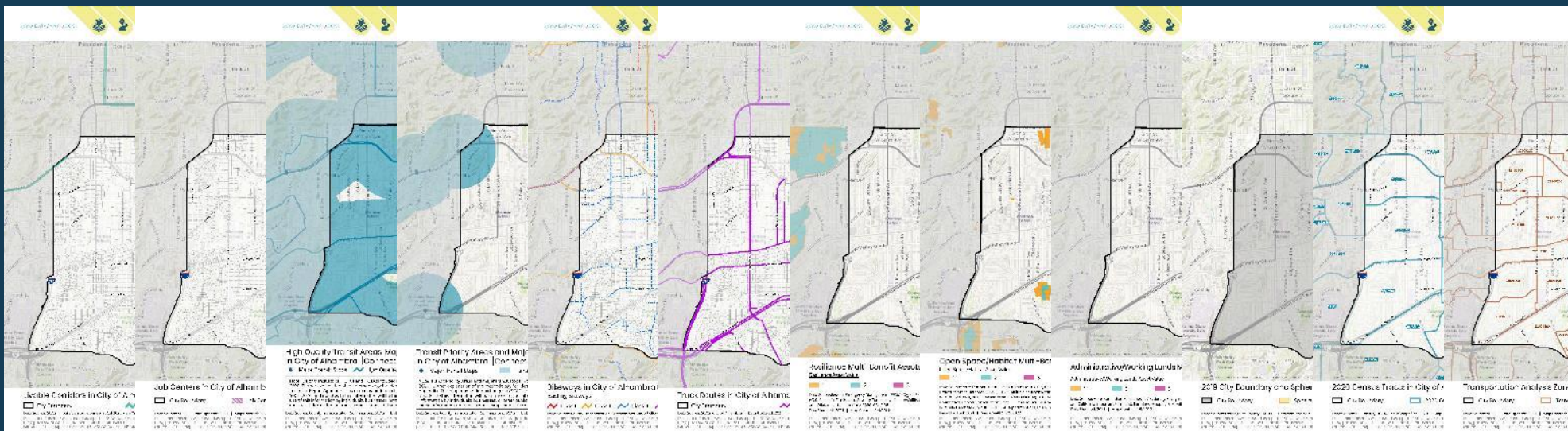
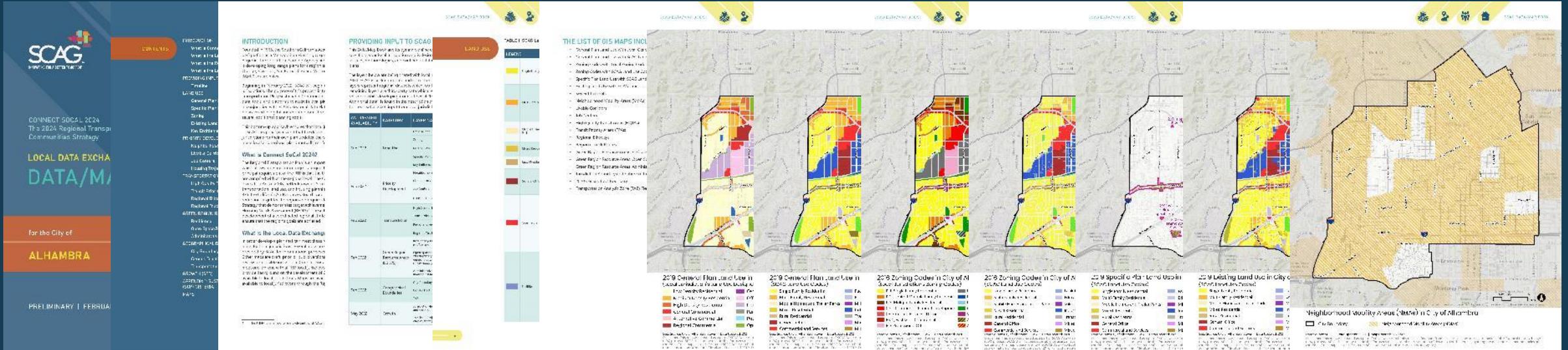
Population Households Employment



LDX GETS HERE BY BEING:

- ✓ Rooted in local planning
- ✓ Steered by a regional vision
- ✓ Aligned with state and federal policy

SCAG Data/Map Book Sample (Local Data Exchange Page)



SCAG
SOUTHERN CALIFORNIA ASSOCIATED GOVERNMENTS

ALHAMBRA CITY

City of Alhambra
1000 E. Main Street
Alhambra, CA 91801
(626) 441-1000

CLAREMONT CITY

City of Claremont
1000 E. Main Street
Claremont, CA 91711
(951) 746-1000

IRVINE CITY

City of Irvine
1000 E. Main Street
Irvine, CA 92612
(949) 261-1000

NEWPORT BEACH CITY

City of Newport Beach
1000 E. Main Street
Newport Beach, CA 92660
(949) 441-1000

PLACENTIA CITY

City of Placentia
1000 E. Main Street
Placentia, CA 92679
(714) 991-1000

WEST GARDEN CITY

City of West Garden
1000 E. Main Street
West Garden, CA 92686
(949) 441-1000

WEST GARDEN CITY

City of West Garden
1000 E. Main Street
West Garden, CA 92686
(949) 441-1000

WEST GARDEN CITY

City of West Garden
1000 E. Main Street
West Garden, CA 92686
(949) 441-1000

SCAG Data/Map Book Contents



| CATEGORY | LAYER NAME | REVIEW TYPE |
|----------------------|-----------------------------|--|
| Land Use | General Plan | Update/Corrections |
| | Zoning | Update/Corrections |
| | Existing Land Use | Update/Corrections |
| | Specific Plan Land Use | Update/Corrections |
| | Key Entitlements | Update/Corrections |
| Priority Development | Neighborhood Mobility Areas | Optional |
| | Livable Corridors | Optional |
| | Job Centers | Optional |
| | Housing Trajectory | Update/Corrections and site inventory upload |
| Transportation | High Quality Transit Areas | Reference Only |
| | Transit Priority Areas | Reference Only |
| | Regional Bikeways | Optional |
| | Regional Truck Routes | Optional |

| CATEGORY | LAYER NAME | REVIEW TYPE |
|--------------------------------------|--|--------------------|
| Green Region Resource Areas (SB 375) | Resilience (<i>Flood areas, coastal inundation, wildfire risk</i>) | Reference Only |
| | Open Space/Habitat (<i>Open space and parks, endangered species and plants, sensitive habitat areas, natural community and habitat conservation plans</i>) | Reference Only |
| | Administrative/Working Lands (<i>Tribal nations, military installations, farmlands</i>) | Reference Only |
| Geographical Boundaries | City Boundary and Sphere of Influence | Reference Only |
| | Census Tract | Reference Only |
| | TAZ (Tier2) | Reference Only |
| Growth (available May 2022) | Jurisdiction-level projections of households and employment (2019-2050) | Update/Corrections |
| | TAZ-level projections of households and employment (2019-2050) | Update/Corrections |

Digital versions of these data layers will be available to local jurisdictions through their RDP LDX login.

LDX Timeline



| EVENT | ANTICIPATED DATE |
|---|-----------------------|
| Local Data Exchange - Soft Launch. Data/Map book Local Data Exchange Soft Launch. Data layers (except growth) available for local review through Data/Map Books and Regional Data Platform. | February 23, 2022 |
| Subregional outreach and trainings on LDX and RDP. LIST team available for questions and consultation. | Feb - Apr 2022 |
| Local Data Exchange Complete Launch. Data/Map Book and RDP updated to include preliminary growth data. | Estimated May 4, 2022 |
| One-on-one meetings with local jurisdictions to review the data package and feedback opportunity. | Beginning May 2022 |
| Deadline for local jurisdictions to provide feedback for possible inclusion in Connect SoCal 2024. | Dec 2, 2022 |
| Regional collaboration on plan development. Continued development of Connect SoCal 2024 strategies with stakeholders, working groups, and the general public. | Early 2023 |
| Draft Connect SoCal 2024 release | Fall 2023 |
| Final Connect SoCal 2024 adoption | April 2024 |

Local Data Exchange Process – Outreach



**Most meetings
with local
jurisdictions
will be virtual.**

- Subregional and General Outreach, one-on-one upon request – February to May 2022
- One-on-one meetings – Beginning in May 2022
- Conducted by the Local Information Services Team (LIST) – list@scag.ca.gov

Regional Data Platform (RDP) Goals



1. Provide access to data, modern tools, and best practices that support stronger planning and information-based decision making at all levels
2. Streamline the exchange of data with jurisdictions and partners across the region while establishing procedures and standards for geospatial data consistency
3. Establish a community of planners, GIS professionals, and practitioners to foster collaboration and collective learning, as well as guide the long-term growth and evolution of the RDP

Supporting *regionally aware* local planning
And *locally informed* regional planning

For a more cohesive and sustainable region...

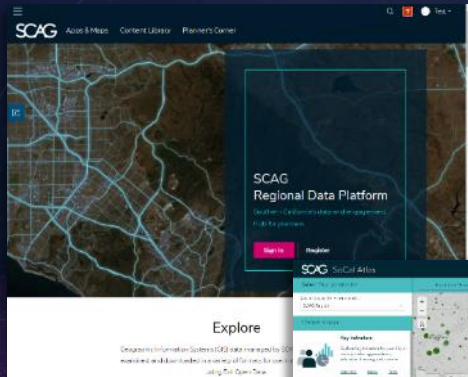
SCAG's Regional Data Platform (RDP) Launched on February 23rd, 2022



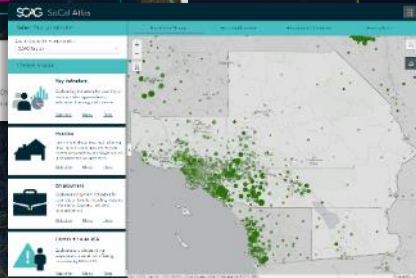
...Supporting Planning and Data Sharing Workflows Across Jurisdictions

Accessible Data and Information

Regional Hub



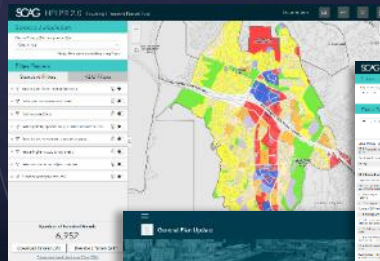
SoCal Atlas



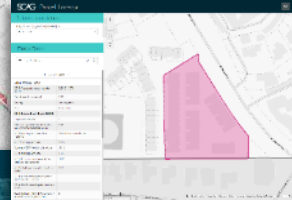
SCAG Regional Data Platform (RDP)

Planning & Engagement Tools

HELPR



Parcel Explorer

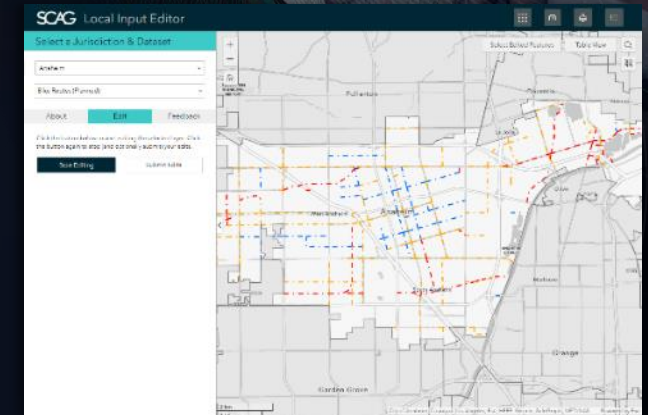


General Plan Update



General Plan Update Initiative Templates

Data Sharing Tools & Workflows



Local Data Exchange

*Empowering planners and residents. . .
... To create more sustainable communities*

RDP Data & Information Tools



Member Agency Only



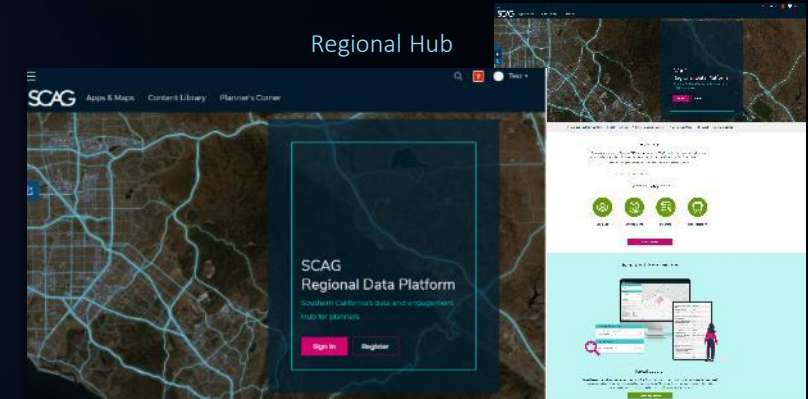
Publicly Accessible



Regional Hub

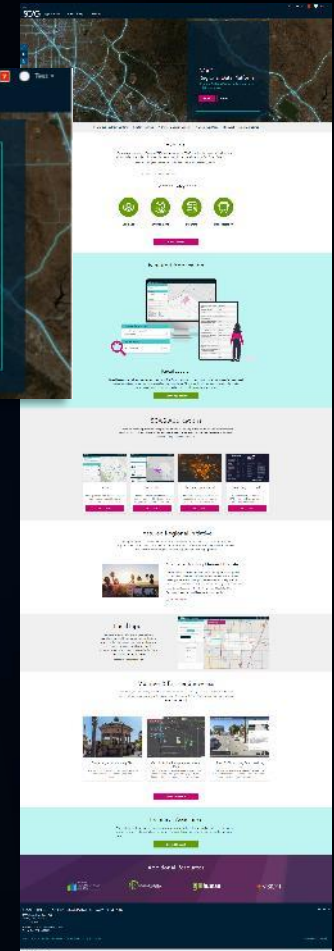
Provides one-stop access to data, tools, and information as well as a platform for two-way engagement. Features and capabilities include:

- Rich content catalogue with data, maps, apps, policy resources, and more
- “Planner’s Corner” full of planning-specific resources
- Public and private access
- Collaboration workspace for regional programs and initiatives (*coming soon*)
- Ability to request one-on-one technical assistance from SCAG



SoCal Atlas

A web-based experience allowing member agencies, other regional stakeholders, and the general public to explore data, statistics, and maps across topics and geographies.



RDP Planning & Engagement Tools



Member Agency Only



Publicly Accessible



HELPR



Provides the ability to evaluate which parcels within a jurisdiction may have potential for residential development based on parcel attribute information and recommended filters.

Parcel Locator



A self-service resource for planners, residents, or other stakeholders (such as developers) to find and discover rich information about specific parcels.

Local General Plan Update Site (template)



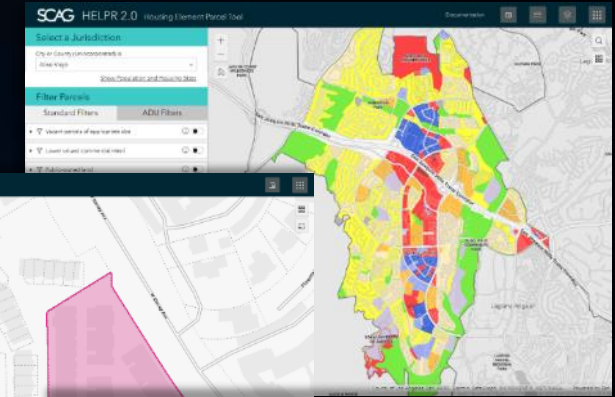
A ready-to-use template for web-based General Plans for use by Member Agencies to communicate and engage with residents around their General Plan update.

Off-the-Shelf Planning & Engagement Tools

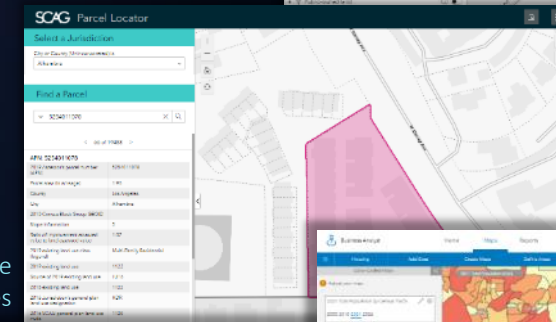


Esri products, provided to member agencies, along with resources, templates, and best practices to support a broad range of common planning and resident engagement workflows. This includes Business Analyst Web, ArcGIS Urban, and ArcGIS Pro

HELPR



Parcel Locator



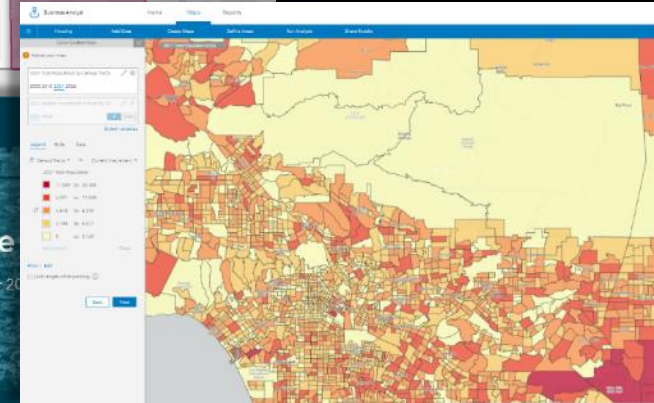
Local GP Update Site Templates



What is a General Plan?

The General Plan is a policy document approved by the City Council to guide future development within the City. The new 2035 General Plan is organized around elements (or themes), which include Mobility and Access, which are key elements to guide future development. The eight elements in this 2035 General Plan and Housing Land Use, Mobility, Access, Safety, Parks and Recreation, Natural Resources, and Climate Change.

Business Analyst Web



RDP's Local Data Exchange (LDX) Tools



Member Agency Only



Publicly Accessible



LDX Website

A central location for member agencies and other stakeholders to access data sharing tools and related Local Data Exchange resources, view information and statistics on the state of data in the region and request technical assistance from SCAG.

Data Editor

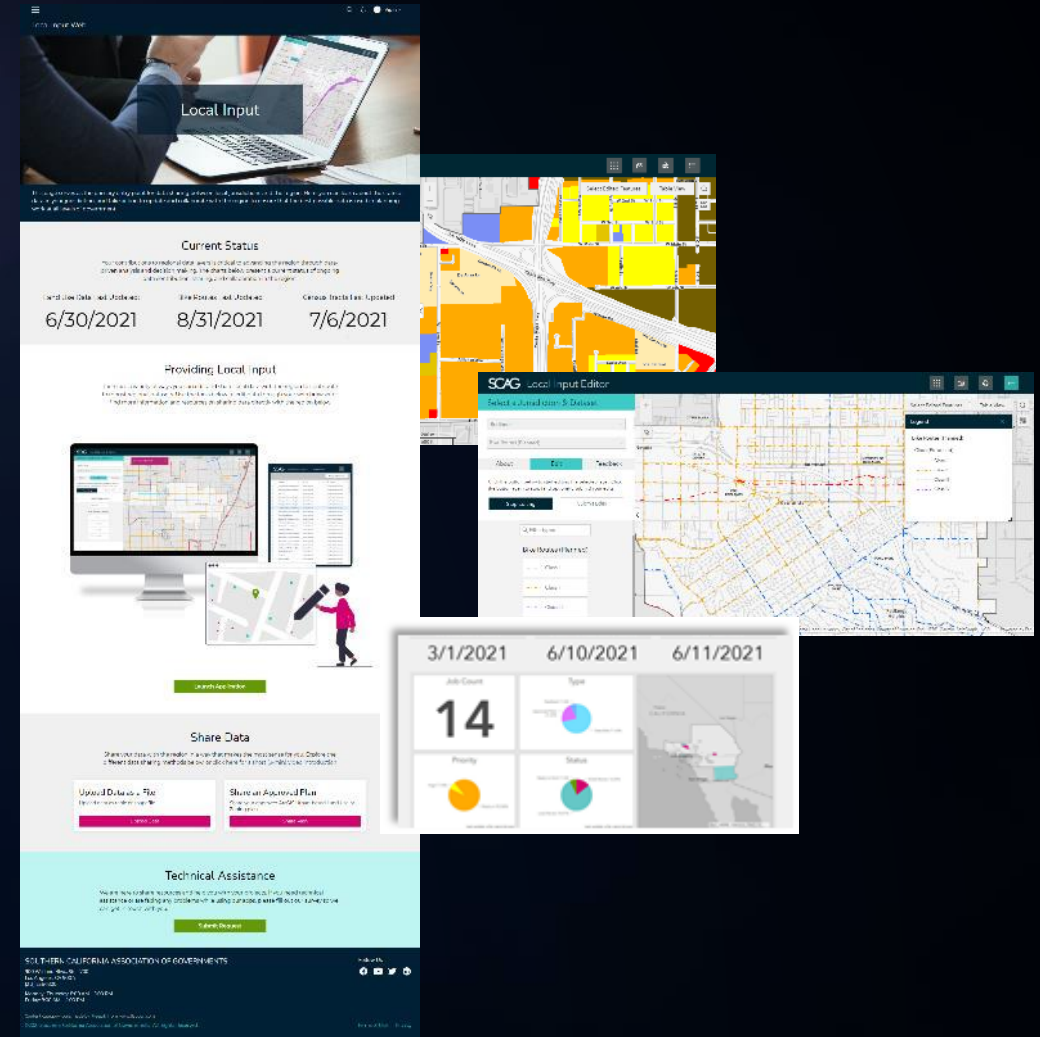
A web-based application for jurisdictions and other key stakeholders to explore, review, and update/comment on data shared with SCAG through the Local Data Exchange process for their jurisdiction.

Data Sharing

Additional mechanisms for member agencies to provide data to SCAG as part of the Local Data Exchange process, including GIS data file upload and sharing an approved plan in ArcGIS Urban.

Data Reviewer

A workflow allowing member agencies to review and approve edits to data within their jurisdiction before edits are sent to SCAG and incorporated to the regional layers



RDP Tools Summary



Member Agency Only

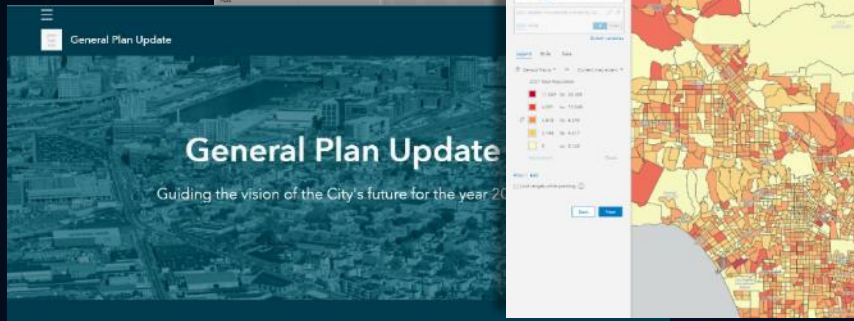
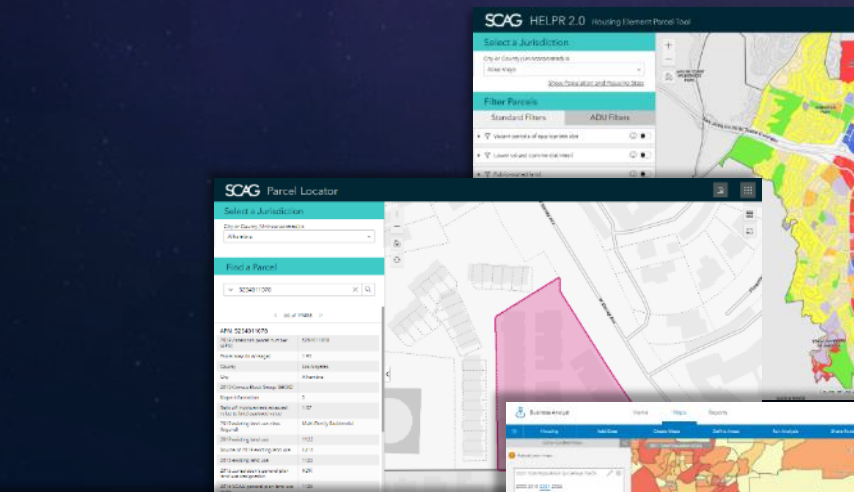
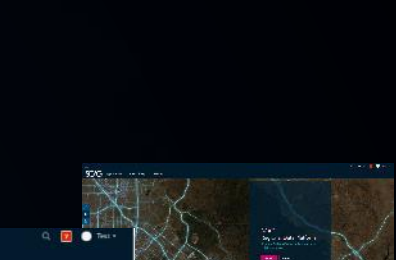
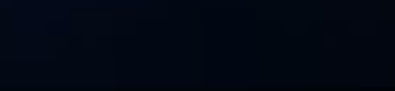
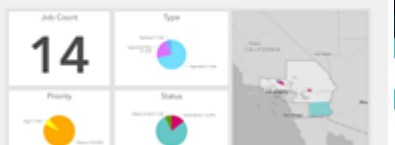
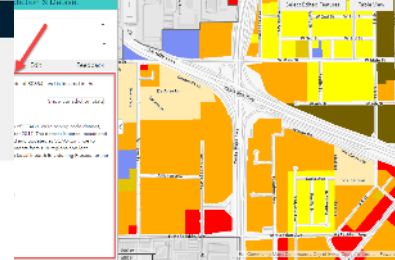
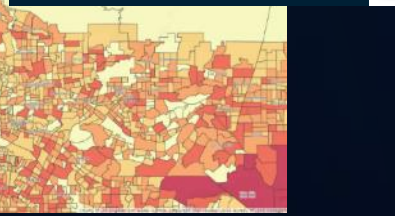


Publicly Accessible



| RDP Tools and Capabilities | URL | Accessible to |
|---|---|---------------|
| Regional Hub | https://hub.scag.ca.gov/ | |
| SoCal Atlas | https://rdp.scag.ca.gov/socal-atlas/ | |
| HELPR | https://rdp.scag.ca.gov/helpr/ | |
| Parcel Locator | https://rdp.scag.ca.gov/parcel-locator/ | |
| Local General Plan Update Site Templates | https://hub.scag.ca.gov/pages/planners-corner | |
| Off-the-Shelf Planning & Engagement Tools | https://hub.scag.ca.gov/pages/planners-corner | |
| LDX Website | https://hub.scag.ca.gov/pages/ldx | |
| LDX Data Editor | https://rdp.scag.ca.gov/ldx-editor/ | |
| LDX Data Sharing | https://rdp.scag.ca.gov/portal/apps/sites/#/ldx-web | |
| LDX Data Reviewer | https://rdp.scag.ca.gov/portal/apps/sites/#/ldx-web | |

RDP – LDX System Demo



What is a General Plan?

The General Plan is a policy document approved by the City Council to guide future development within the City. The new 2035 General Plan is organized around elements for Growth, which include Policies and Actions to guide future development. The eight elements in the 2035 General Plan and Housing Land Use Map are: Growth, Safety, Parks and Recreation, Natural Resources, and Climate Change.

Local Data Exchange – Next Steps



For local jurisdictions:

- 1) Request ArcGIS licenses at <https://hub.scag.ca.gov/pages/planners-corner>
- 2) Request LDX Web access at <https://hub.scag.ca.gov/pages/ldx>
- 3) SCAG LIST will start contacting cities in late March to onboard
- 4) SCAG General Assembly (May 5-6) – visit the LDX Table
- 5) One-on-one meeting with SCAG between May and ~ September
- 6) Submit all feedback by December 2nd

Thank You!

<https://scag.ca.gov/local-data-exchange>

<https://hub.scag.ca.gov>
list@scag.ca.gov

Tom Vo and Kevin Kane, PhD

Program Managers, Planning Division

vo@scag.ca.gov and kane@scag.ca.gov

www.scag.ca.gov



- LIST – Local Information Services Team
- LDX – Local Data Exchange
- Connect SoCal – Regional Transportation Plan/Sustainable Communities Strategy
- PEIR – Program Environmental Impact Report
- RDP – Regional Data Platform
- HELPR – Housing Element Parcel Tool
- SED – Socioeconomic Dataset
- TAZ – Transportation Analysis Zone
- HQTa – High Quality Transit Area
- TPA – Transit Priority Area
- NMA – Neighborhood Mobility Area