



# Connect SoCal Development

Kome Ajise

Executive Director

October 4, 2019

[www.scag.ca.gov](http://www.scag.ca.gov)



## MULTI-GENERATIONAL PLANNING for our region's future



**CHILDREN**



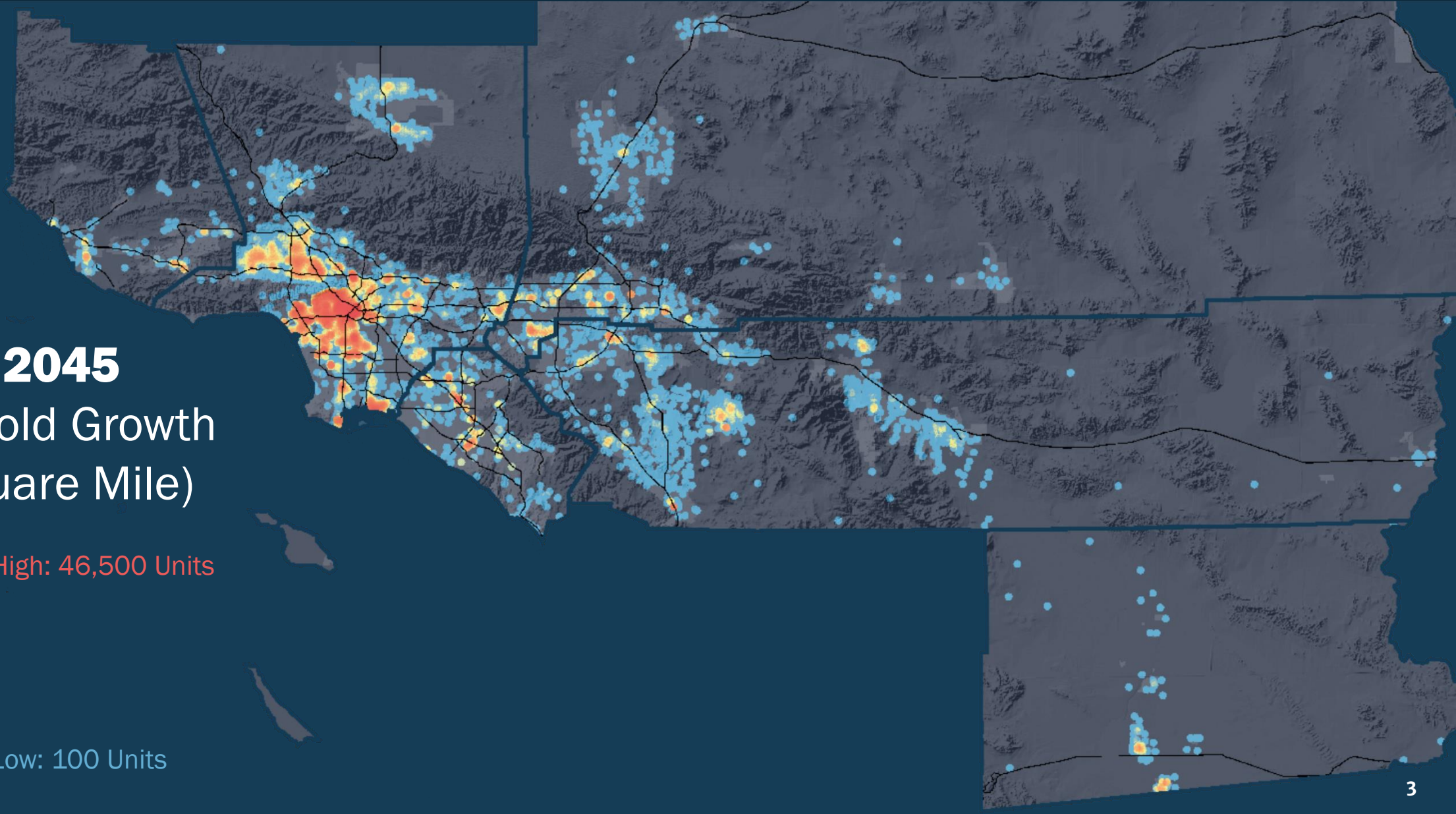
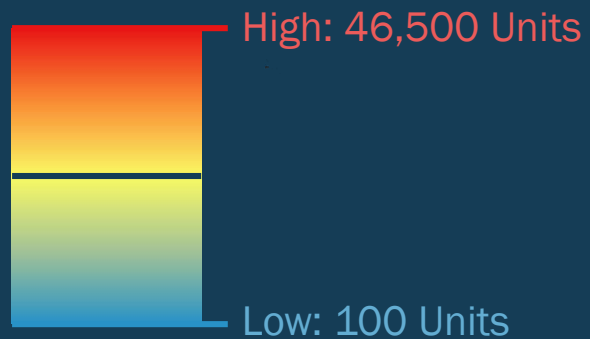
**WORKING AGE  
POPULATION**



**SENIORS**

# Where Will We Grow?

**2016 – 2045**  
Household Growth  
(Per Square Mile)



## How Will We Connect?



*Technology and innovation are changing how we travel now and in the future.*



## Local Input



# Local Input



*Existing and Planned Land Use,  
Local Transportation Infrastructure,  
Resource Areas, Potential Infill Parcels*



*Current and Future  
Population, Households,  
Employment*



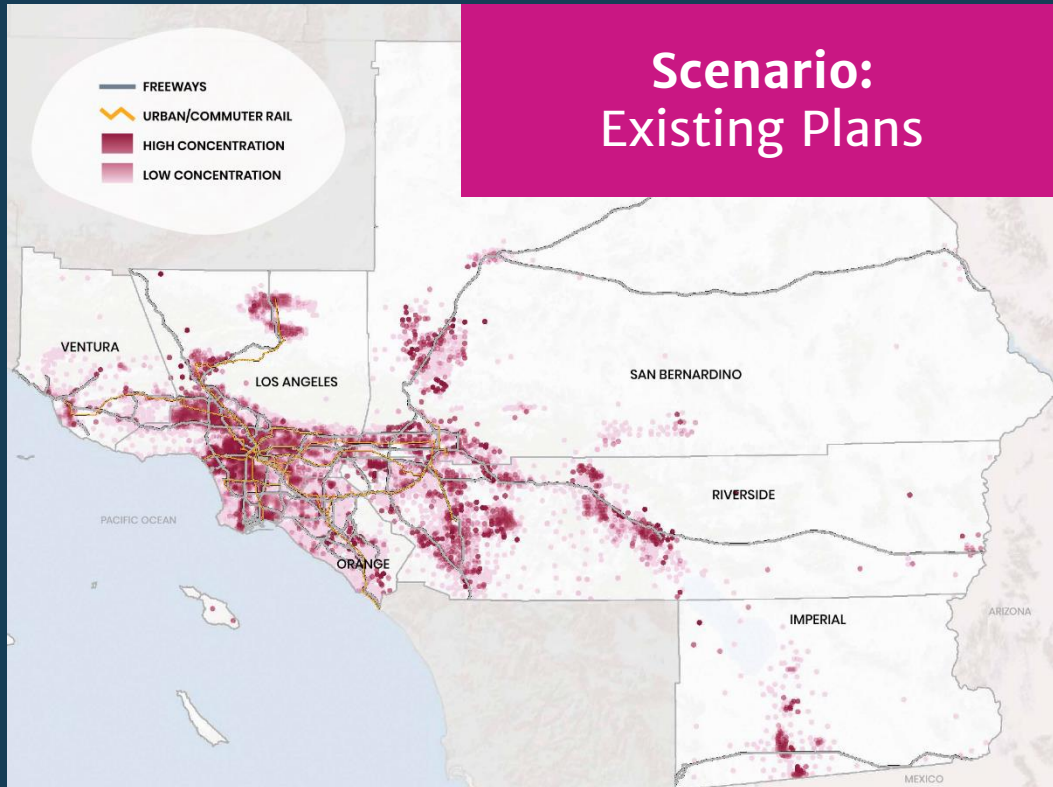
*Sustainability Best Practices,  
Transit Supportive Measures*

# Scenario Development

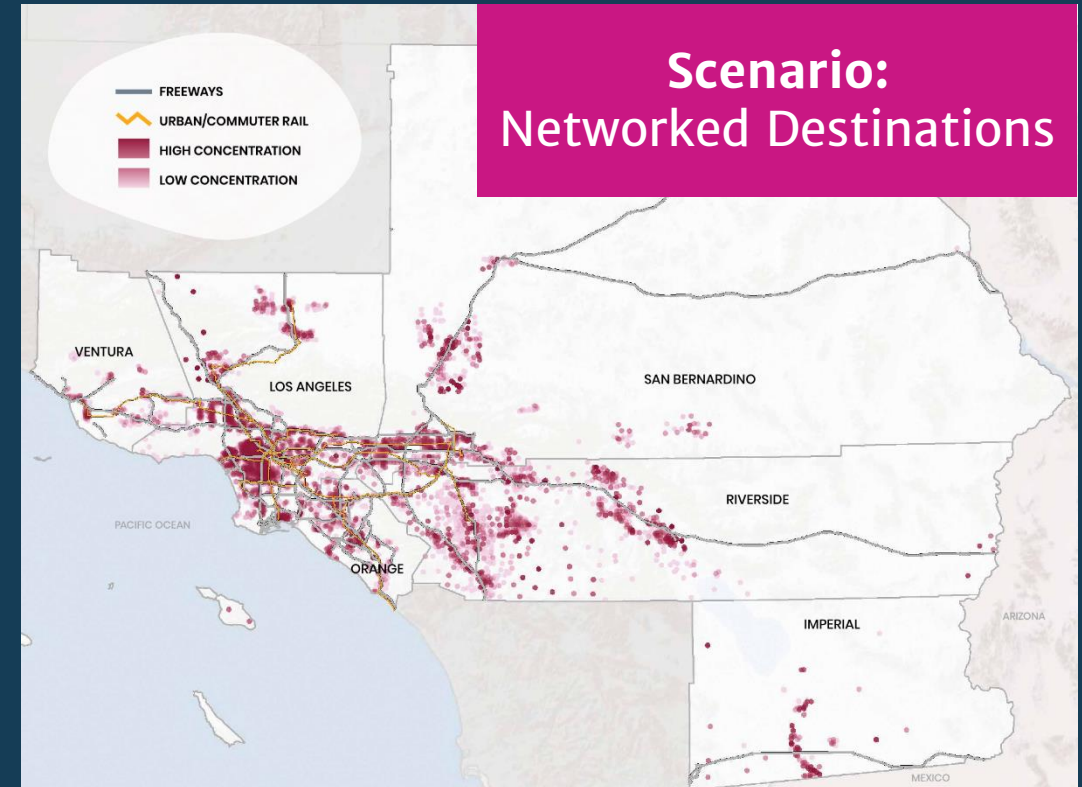




# Scenario Development



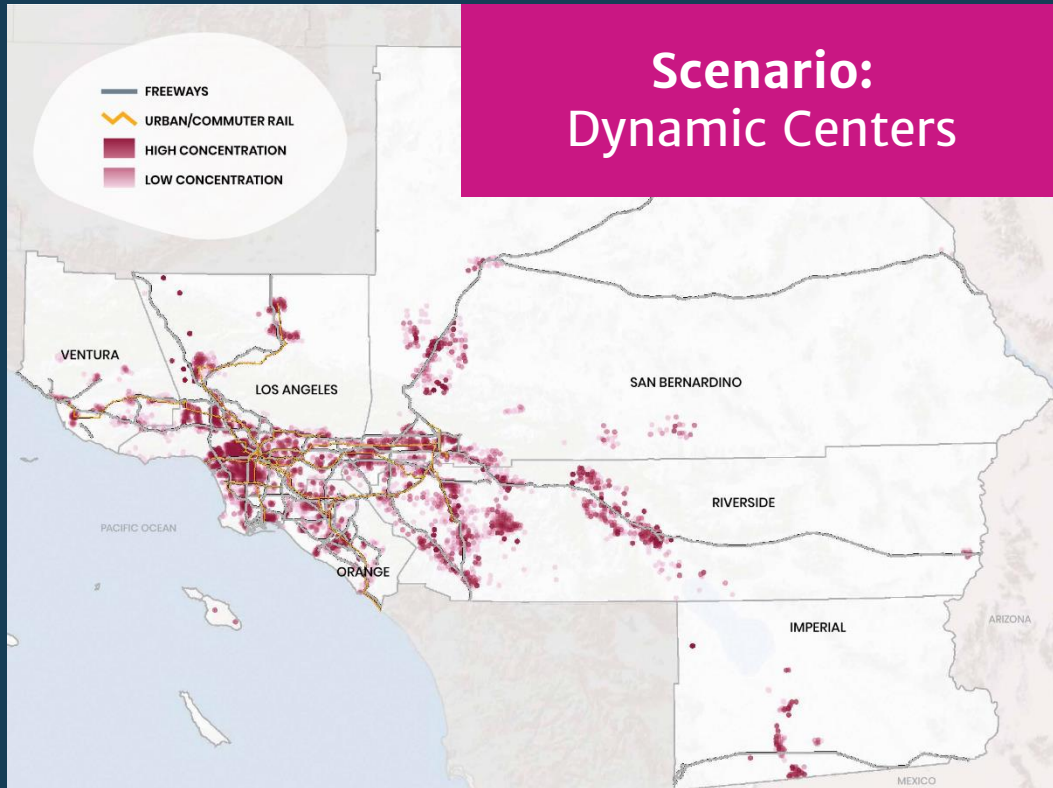
- Growth reflects local government projects
- Transportation network reflects projects from County Transportation Commissions
- Includes technology and work from home trends



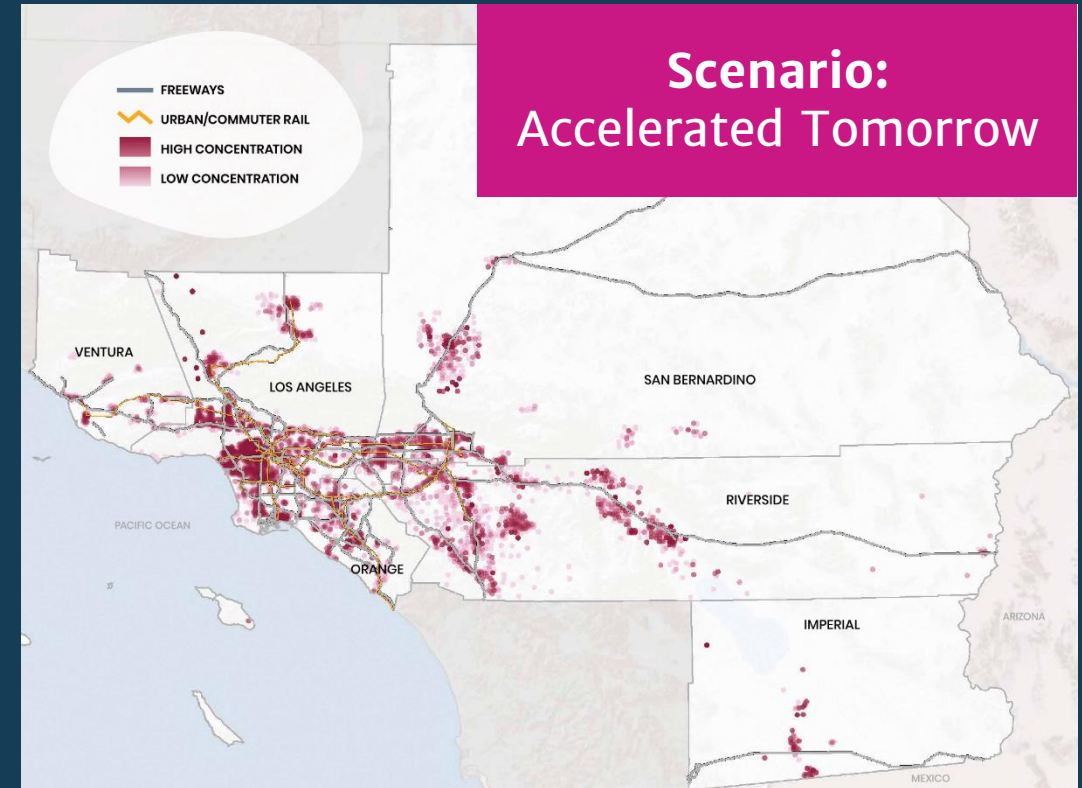
- More growth near transit
- More multifamily housing
- More regional express lanes



# Scenario Development



- More growth near job centers
- Less growth in fire prone areas
- More bike and walk infrastructure



- More growth near transit
- Faster transit service
- More electric vehicle charging

# Public Input



# Connect SoCal Outreach



**500+**  
**people**

**Public Workshops**



**200-700+**  
**people**

**Telephone Town Hall**



**1,500+**  
**people**

**Community Based Organizations**



**1,300+**  
**engagements**

**Street Team**



**49M**  
**impressions**

**Advertising**



**4,000+**  
**completions**

**Surveys**

## Surveys: What We Heard

**Future growth should not occur on pristine open space.**

**Close to transit investments, regardless if its within existing single family or not.**

**Densification should be done carefully to make sure existing residents aren't pushed out, especially the disadvantaged...**

**Within in city limits! No more stretching into dangerous wildfire country...**

**Farm land and protected areas should not be developed. Rural areas need to remain rural.**

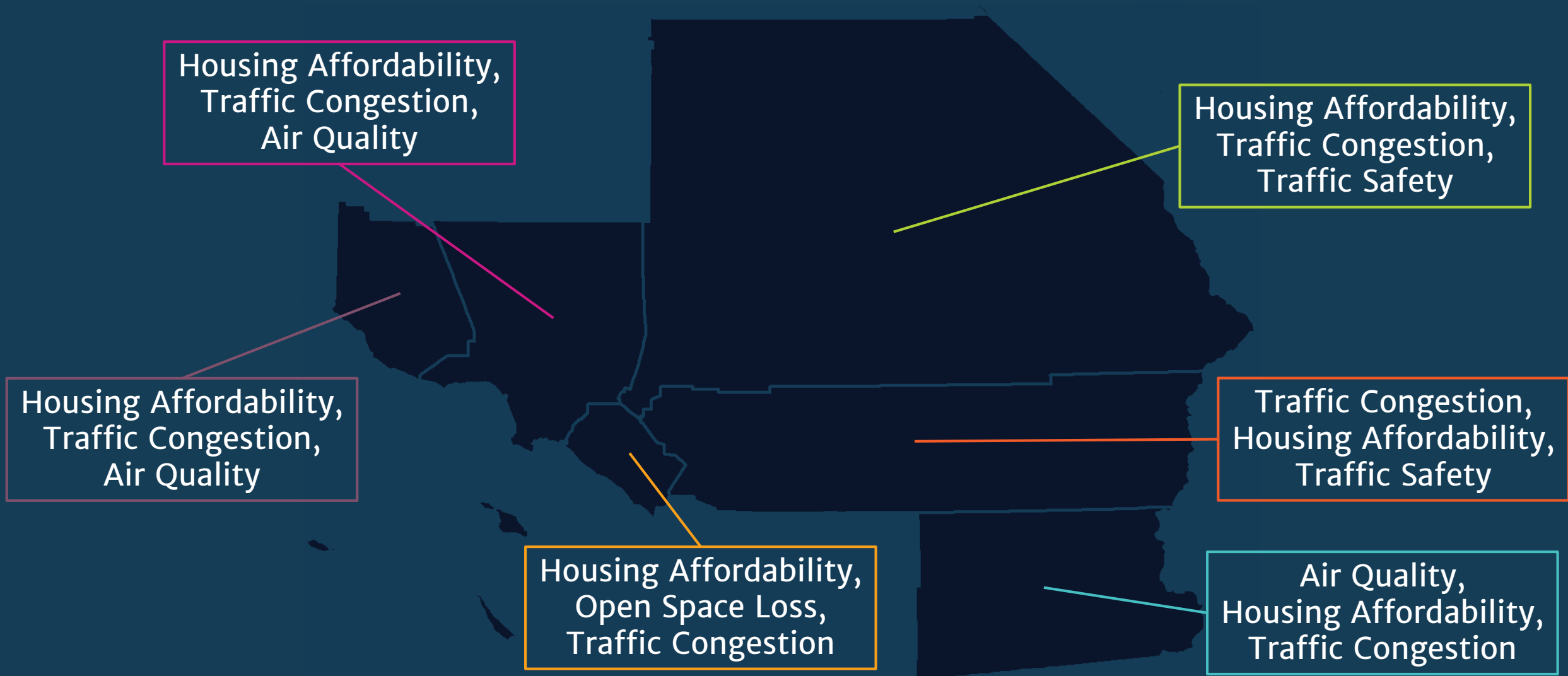
**Keep single family housing zoning.**

**Do not need further growth, already too crowded.**

**Build new cities if you must out in the desert...**



# Surveys: Perspectives on Top Challenges, by County



# Community Based Organization Partners





## Draft Plan Development



Achieve **2020 (8%)** and **2035 (19%)**  
regional per capita GHG emission  
reduction targets.

## Since the 2016 RTP/SCS

- Senate Bill 1
- LA County Measure M
- Increased GHG Target to 19% by 2035
- Declining Transit Ridership
- Performance Based Planning – MAP 21
- Activity Based Model (ABM)
- Selection of Los Angeles to host the 2028 Olympics

# Goals



# Performance Measures for Connect SoCal

## Location Efficiency

*Improved Coordination of Land Use and Transportation Planning*

## Mobility and Accessibility

*Ability to Easily Reach Desired Destinations Using Reasonably Available Transportation Options*

## Safety and Public Health

*Minimize Transportation System Health Risks*

## Environmental Quality

*Improve the Environment and Air Quality*

# Performance Measures for Connect SoCal

## Economic Opportunity

*Job Creation and Improved Regional Economy*

## Investment Effectiveness

*Benefits Provided Compared to Cost of Investment*

## Transportation System Sustainability

*Maintenance of Existing Transportation Infrastructure*

## Environmental Justice

*Ensure Social Equity*



## Next Steps



## Next Steps



## Next Steps



# Important Considerations

## What If Connect SoCal Doesn't Meet State GHG Targets?

- SCAG would be required to prepare a financially unconstrained Alternative Planning Strategy (APS) to meet regional GHG emission reduction targets.

## What If Connect SoCal Doesn't Demonstrate Transportation Conformity?

- After June 1, 2020 (Conformity Lapse Grace Period)
  - *All projects in 2016 RTP/SCS and 2019 FTIP can still receive federal approval, but no new projects and no project amendments.*
- After Grace Period (Conformity Lapse)
  - *No federal funding or approval of non-exempt projects and TCM projects not in an approved plan unless these projects have received federal authorization prior to lapse.*



# Thank You!

Kome Ajise  
ajise@scag.ca.gov  
(213) 236-1835  
[www.scag.ca.gov](http://www.scag.ca.gov)

